

APP CRS	Rwy Idg	N/A
047°	TDZE	N/A
	Apt Elev	730

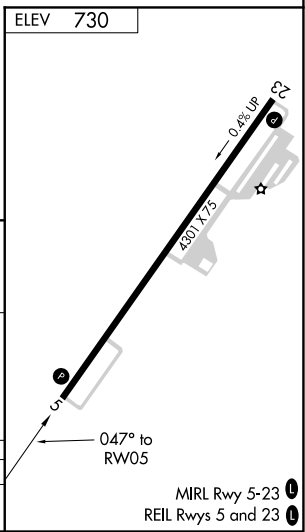
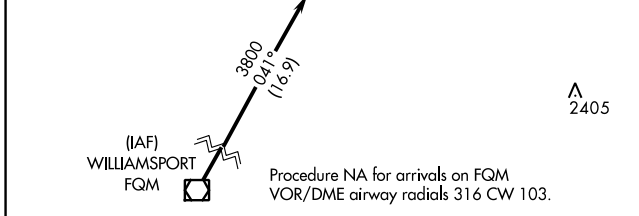
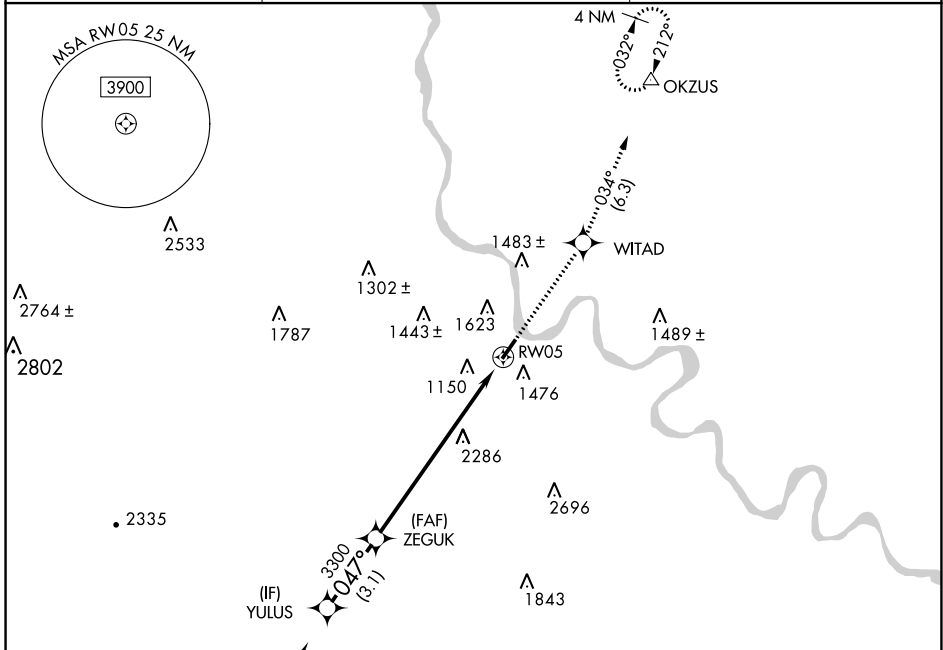
# RNAV (GPS)-A

BRADFORD COUNTY (N27)

**NA** DME/DME RNP-0.3 NA. Visibility reduction by helicopters NA. When local altimeter setting not received, use Elmira altimeter setting and increase all MDAs 40 feet. Procedure NA at night.

**MISSED APPROACH:** Climb to 3500 direct WITAD and on track 034° to OKZUS and hold.

AWOS-3 <b>119.925</b>	BINGHAMTON APP CON <b>118.6 257.625</b>	UNICOM <b>123.0 (CTAF) 0</b>
--------------------------	--	---------------------------------



	YULUS	ZEGUK	tr	OKZUS
	3800	3300	034°	△
	3.1 NM	8 NM		

CATEGORY	A	B	C	D
CIRCLING	2760-1¼ 2030 (2100-1¼)	2760-1½ 2030 (2100-1½)	NA	

NE-4, 15 JUL 2021 to 12 AUG 2021

NE-4, 15 JUL 2021 to 12 AUG 2021