

APP CRS 227°	Rwy Idg TDZE Apt Elev	6027 2429 2454
------------------------	-----------------------------	---

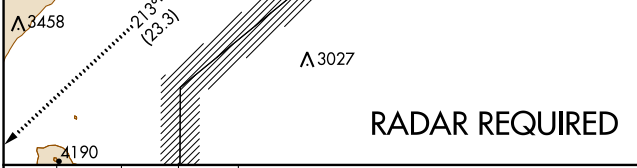
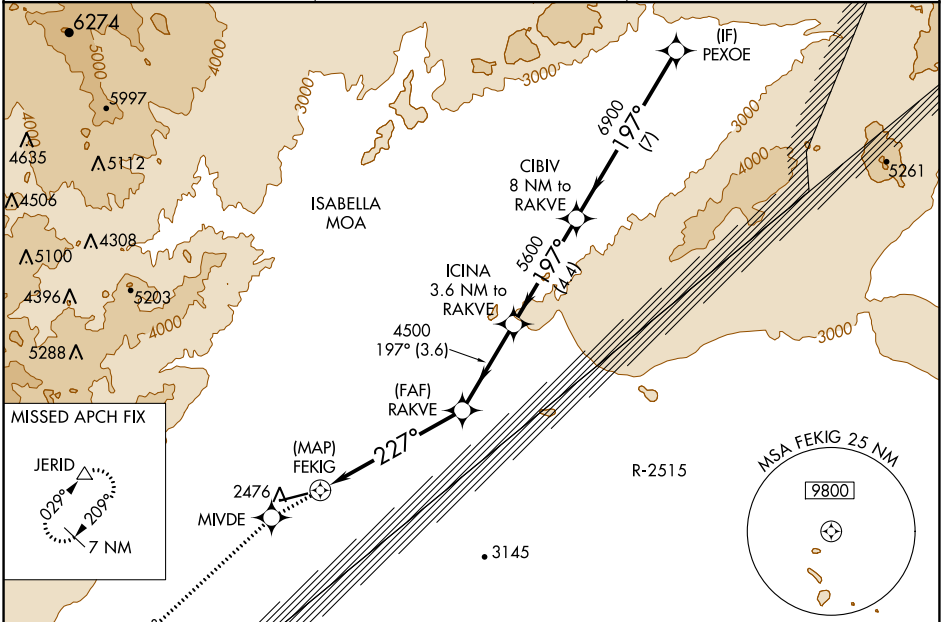
RNAV (GPS) RWY 24

CALIFORNIA CITY MUNI (L71)

RNP APCH.
 ▼ If local altimeter setting not received, use Edwards AFB altimeter setting and increase all MDAs 60 feet; if neither received, procedure not authorized.
 ▲ NA

MISSED APPROACH: Climb to 9000 direct MIVDE and via 213° track to JERID and hold, continue climb-in-hold to 9000.

AWOS-1 120.875	JOSHUA APP CON 133.65 348.7	UNICOM 122.7 (CTAF)
--------------------------	---------------------------------------	-------------------------------



9000	MIVDE	JERID	VGSI and descent angles not coincident (VGSI Angle 3.00/TCH 40).	PEXOE
213° tr	227°	197°	197°	9000
0.5	5.8 NM	3.6 NM	4.4 NM	7 NM

ELEV 2454	TDZE 2429
-----------	-----------

RADAR REQUIRED

Category	A	B	C	D
LNAV MDA	2820-1	391 (400-1)		NA
CIRCLING	2960-1	506 (600-1)	3080-1¾ 626 (700-1¾)	NA

MRL Rwy 6-24
REL Rwy 24

SW-3, 15 JUL 2021 to 12 AUG 2021

SW-3, 15 JUL 2021 to 12 AUG 2021