

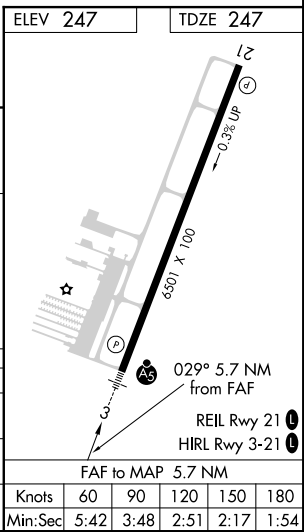
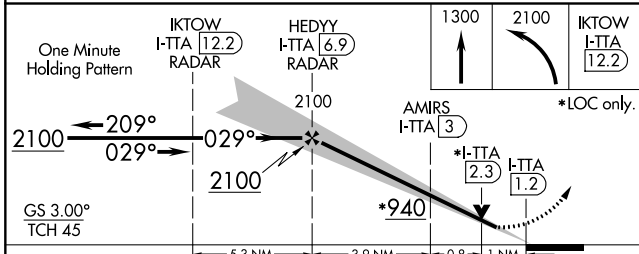
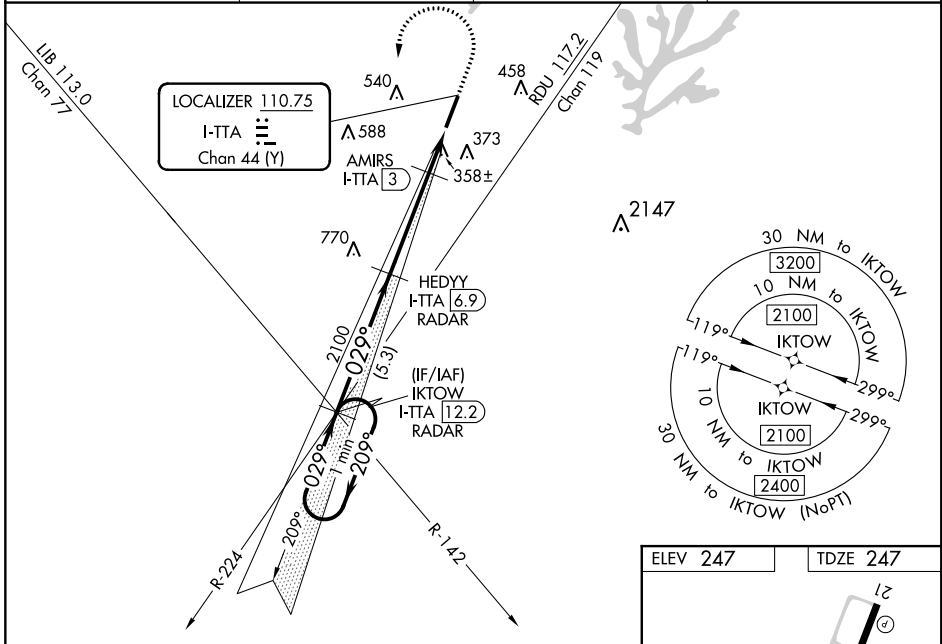
LOC/DME I-TTA <b>110.75</b> Chan 44 (Y)	APP CRS <b>029°</b>	Rwy Idg TDZE Apt Elev	<b>6501</b> <b>247</b> <b>247</b>
-----------------------------------------------	------------------------	-----------------------------	-----------------------------------------

RALEIGH  
EXECUTIVE JETPORT AT SANFORD-LEE COUNTY (TTA)

# ILS Y or LOC Y RWY 3

RNAV 1-GPS required.	MISSED APPROACH: Climb to 1300 then climbing left turn to 2100 direct IKTOW INT/I-TTA 12.2 DME/RADAR and hold.
RNAV 1-GPS required or RADAR required for procedure entry.	
When local altimeter setting not received, use Raleigh/Durham altimeter setting: increase DA to 527 feet; increase all MDAs 100 feet and S-LOC 3 Cats C and D visibility to 1 SM and Circling Cat C visibility to 2 SM and Cat D to 2 1/4 SM. For inop ALS, increase S-LOC 3 Cats C and D visibility to 1 SM. For inop ALS when using Raleigh/Durham altimeter setting, increase S-ILS 3 all Cats visibility to 1/2 SM and increase S-LOC 3 Cats C and D visibility to 1 1/2 SM. VDP NA when using Raleigh/Durham altimeter setting.	

AWOS-3 <b>120.625</b>	RALEIGH APP CON <b>125.3 353.675</b>	UNICOM <b>123.075</b> (CTAF)	GC0 <b>135.075</b>
--------------------------	-----------------------------------------	---------------------------------	-----------------------



CATEGORY	A	B	C	D
S-ILS 3	447-1/2		200 (200-1/2)	
S-LOC 3	620-1/2	373 (400-1/2)	620-5/8	373 (400-5/8)
CIRCLING	760-1 513 (600-1)	820-1 573 (600-1)	840-1 1/2 593 (600-1 1/2)	960-2 1/4 713 (800-2 1/4)

ELEV 247	TDZE 247				
Knots	60	90	120	150	180
Min:Sec	5:42	3:48	2:51	2:17	1:54

# ILS Y or LOC Y RWY 3

SE-2, 15 JUL 2021 to 12 AUG 2021

SE-2, 15 JUL 2021 to 12 AUG 2021