

WAAS CH 86522 W21A	APP CRS 209°	Rwy Idg TDZE Apt Elev	6501 230 247
--	------------------------	-----------------------------	---

RNAV (GPS) RWY 21

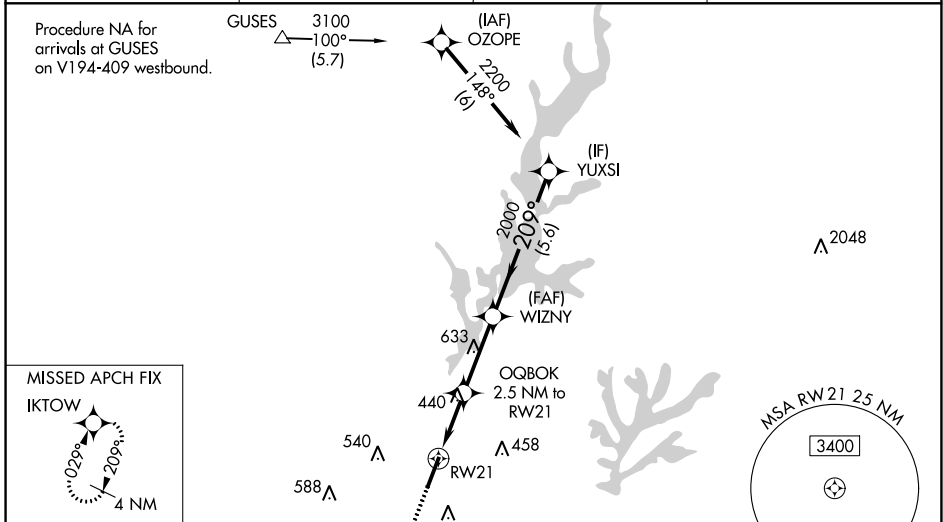
RALEIGH EXECUTIVE JETPORT AT SANFORD-LEE COUNTY (TTA)

RNP APCH.

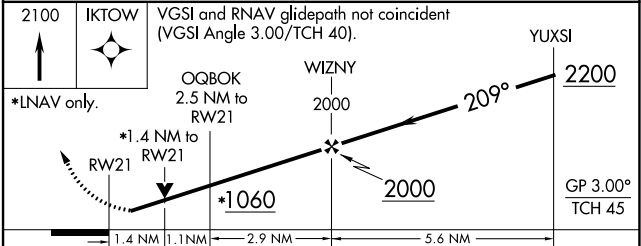
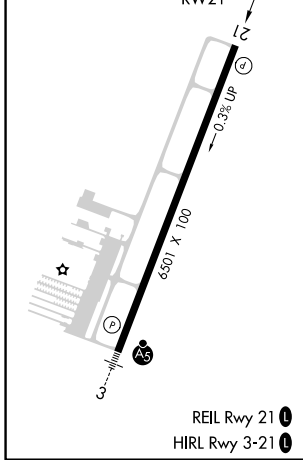
Baro-VNAV NA when using Raleigh/Durham altimeter setting. For uncompensated Baro-VNAV systems, LNAV/VNAV NA below -15°C or above 54°C. When local altimeter setting not received, use Raleigh/Durham altimeter setting and increase all DA 81 feet and all MDA 100 feet. Increase LPV all Cts visibility to 1¼ SM, LNAV/VNAV all Cts visibility to 1½ SM, LNAV Cts C and D visibility to 1½ SM, and Circling Cat C visibility to 2 SM and Cat D visibility to 2¾ SM. Rwy 21 helicopter visibility reduction below ¾ SM NA. VDP NA when using Raleigh/Durham altimeter setting.

MISSED APPROACH: Climb to 2100 direct IKTOW and hold.

AWOS-3 120.625	RALEIGH APP CON 125.3 353.675	UNICOM 123.075 (CTAF) 0	GCO 135.075
--------------------------	---	-----------------------------------	-----------------------



ELEV 247	TDZE 230
-----------------	-----------------



CATEGORY	A	B	C	D
LPV DA		530-1	300 (300-1)	
LNAV/VNAV DA		518-7/8	288 (300-7/8)	
LNAV MDA	700-1	470 (500-1)	700-1¾	470 (500-1¾)
C CIRCLING	760-1 513 (600-1)	820-1 573 (600-1)	840-1½ 593 (600-1½)	960-2¼ 713 (800-2¼)

SE-2, 15 JUL 2021 to 12 AUG 2021

SE-2, 15 JUL 2021 to 12 AUG 2021