

WAAS CH 90531 W07A	APP CRS 068°	Rwy Idg TDZE Apt Elev	4400 650 650
--	------------------------	-----------------------------	---

RNAV (GPS) RWY 7

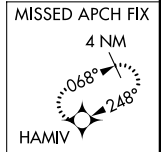
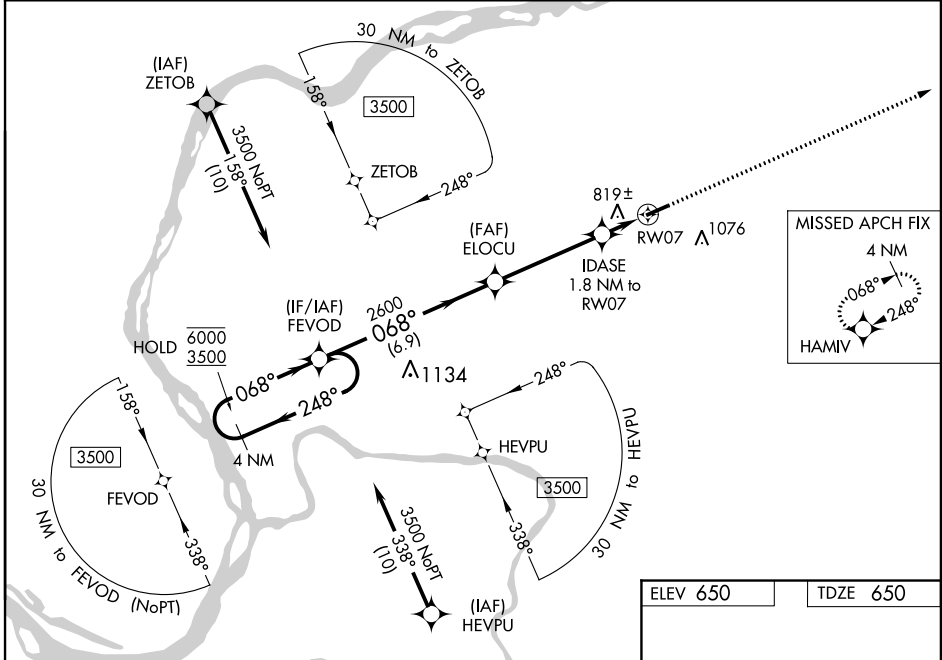
MARION-CRITTENDEN COUNTY JAMES C JOHNSON RGNL (5M9)

RNP APCH.

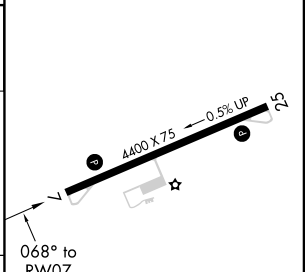
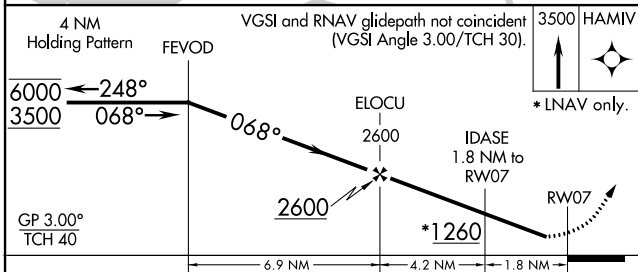
⚠ Rwy 7 helicopter visibility reduction below 1 SM NA. Baro-VNAV NA when using Henderson altimeter setting. For uncompensated Baro-VNAV systems, LNAV/VNAV NA below -16°C or above 54°C. When local altimeter setting not received, use Henderson altimeter setting and increase all DA 117 feet, increase all MDA 120 feet, increase all LPV visibility ¼ SM, increase all LNAV/VNAV visibility ½ SM, increase LNAV Cats C and D visibility ¾ SM, increase Circling Cat B visibility ¼ SM, increase Circling Cat C and D visibility ½ SM. Straight-in Rwy 7 NA at night, Circling Rwy 7 NA at night.

MISSED APPROACH:
Climb to 3500 direct HAMIV and hold.

AWOS-3P 118.15	MEMPHIS CENTER 133.65 292.15	CTAF 122.9
--------------------------	--	----------------------



ELEV 650	TDZE 650
----------	----------



CATEGORY	A	B	C	D
LPV DA		900-1	250 (300-1)	
LNAV/VNAV DA		1132-1½	482 (500-1½)	
LNAV MDA	1080-1	430 (500-1)	1080-1¼	430 (500-1¼)
C CIRCLING	1180-1 530 (600-1)	1360-1 710 (800-1)	1380-2 730 (800-2)	1380-2¼ 730 (800-2¼)

MIRL Rwy 7-25
REIL Rwy 7 and 25

RNAV (GPS) RWY 7

SE-1, 15 JUL 2021 to 12 AUG 2021

SE-1, 15 JUL 2021 to 12 AUG 2021