

WAAS CH 40131 W05A	APP CRS 050°	Rwy Idg TDZE 584 Apt Elev 584	4099
--	------------------------	---	-------------

RNAV (GPS) RWY 5

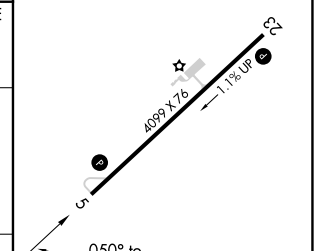
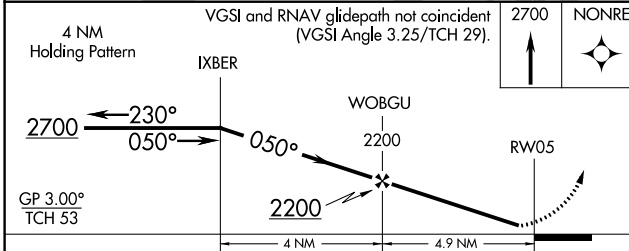
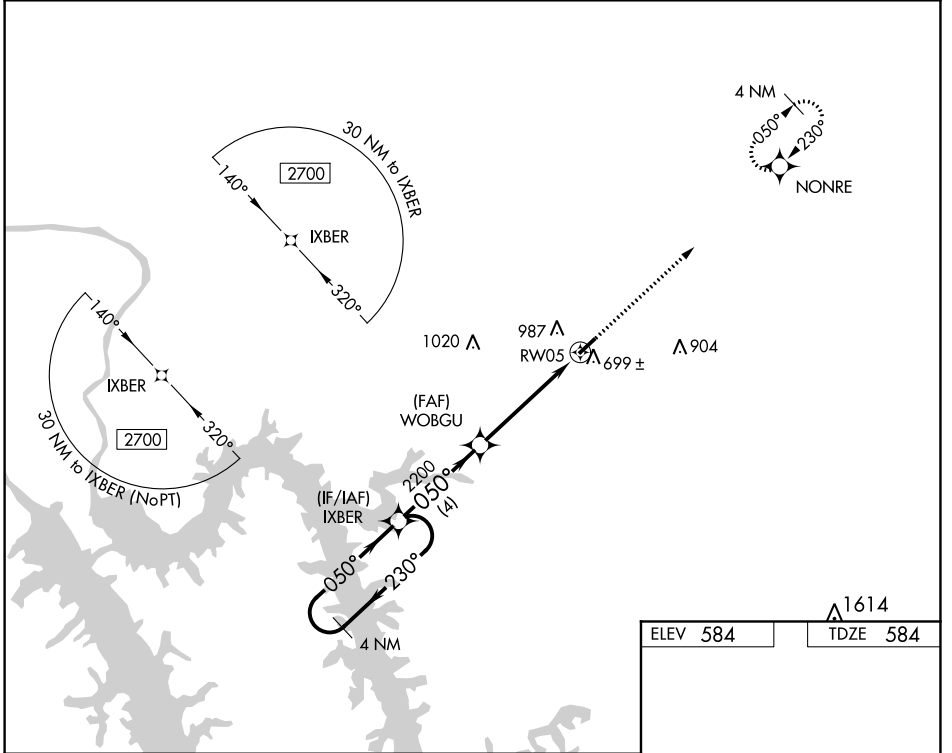
PRINCETON-CALDWELL COUNTY (2M \emptyset)

V Baro-VNAV NA. Use Campbell AAF (Fort Campbell) altimeter setting; when not received, use Madisonville Rgnl altimeter setting and increase all DA 6 feet and all MDA 20 feet.
A NA Increase LPV all Cats visibility $\frac{1}{8}$ mile. DME/DME RNP-0.3 NA. Helicopter visibility reduction below $\frac{3}{4}$ SM NA.

MISSED APPROACH:
Climb to 2700 direct NONRE and hold.

CAMPBELL APP CON
118.1 269.525

UNICOM
122.8 (CTAF) \emptyset



CATEGORY	A	B	C	D
LPV DA	909-1	325 (400-1)		NA
LNAV/VNAV DA	936-1 $\frac{1}{8}$	352 (400-1 $\frac{1}{8}$)		NA
LNAV MDA	1040-1	456 (500-1)		NA
CIRCLING	1420-1 $\frac{1}{4}$	836 (900-1 $\frac{1}{4}$)		NA

ELEV 584 TDZE 584

MIRL Rwy 5-23 \emptyset
REIL Rwy 5 and 23 \emptyset

SE-1, 15 JUL 2021 to 12 AUG 2021

SE-1, 15 JUL 2021 to 12 AUG 2021