

(OPTEC1.OPTEC) 21168

# OPTEC ONE DEPARTURE (RNAV)

AL-9858 (FAA)

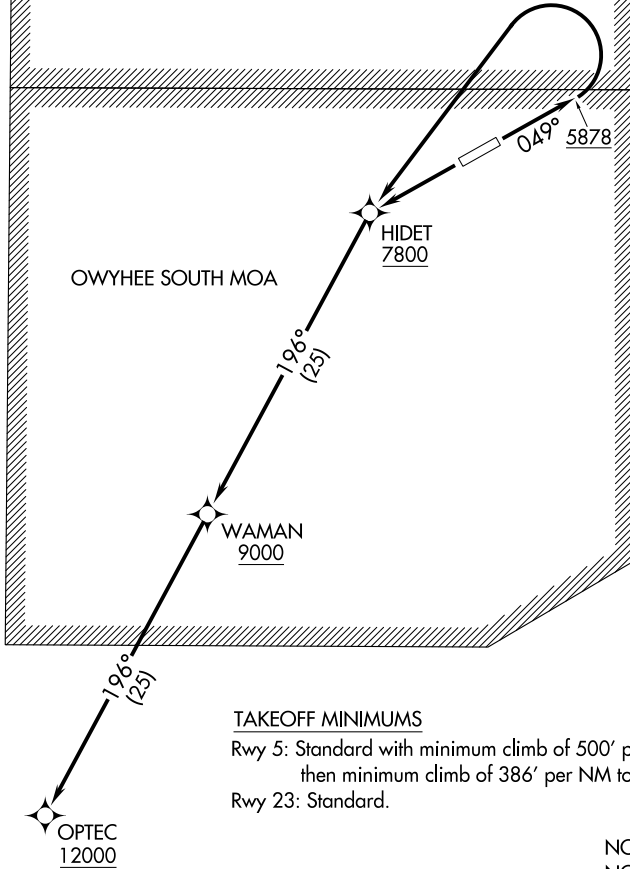
OWYHEE (10U)  
OWYHEE, NEVADA

SALT LAKE CENTER  
118.05 363.0  
AWOS-3  
118.525  
CTAF  
122.9

**TOP ALTITUDE:  
12000**

OWYHEE NORTH MOA

OWYHEE SOUTH MOA



### TAKEOFF MINIMUMS

Rwy 5: Standard with minimum climb of 500' per NM to 5878, then minimum climb of 386' per NM to 7500.

Rwy 23: Standard.

NOTE: GPS required.  
NOTE: RNAV 1.

NOTE: Chart not to scale.



### DEPARTURE ROUTE DESCRIPTION

TAKEOFF RUNWAY 5: Climb on heading 049° to 5878, then climbing left turn direct HIDET, cross HIDET at or above 7800, thence. . . .

TAKEOFF RUNWAY 23: Climb direct HIDET, cross HIDET at or above 7800, thence. . . .

. . . .climbing left turn on track 196° to cross WAMAN at or above 9000, then climb on track 196° to cross OPTEC at or above 12000.

# OPTEC ONE DEPARTURE (RNAV)

(OPTEC1.OPTEC) 17JUN21

OWYHEE, NEVADA  
OWYHEE (10U)

SW-4, 15 JUL 2021 to 12 AUG 2021

SW-4, 15 JUL 2021 to 12 AUG 2021