

WAAS CH <b>65737</b> <b>W02A</b>	APP CRS <b>019°</b>	Rwy Idg TDZE Apt Elev	<b>3665</b> <b>201</b> <b>202</b>
--	------------------------	-----------------------------	---

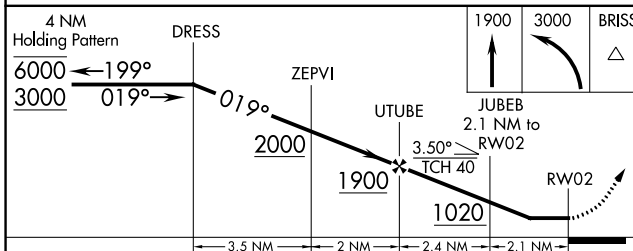
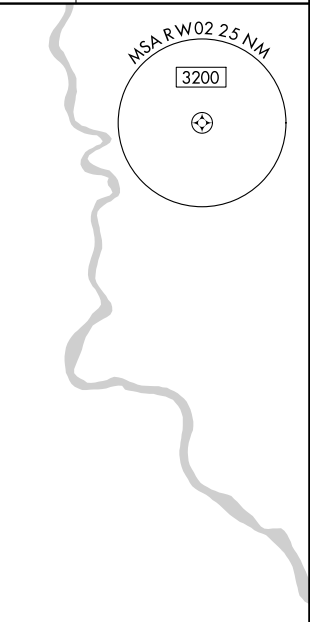
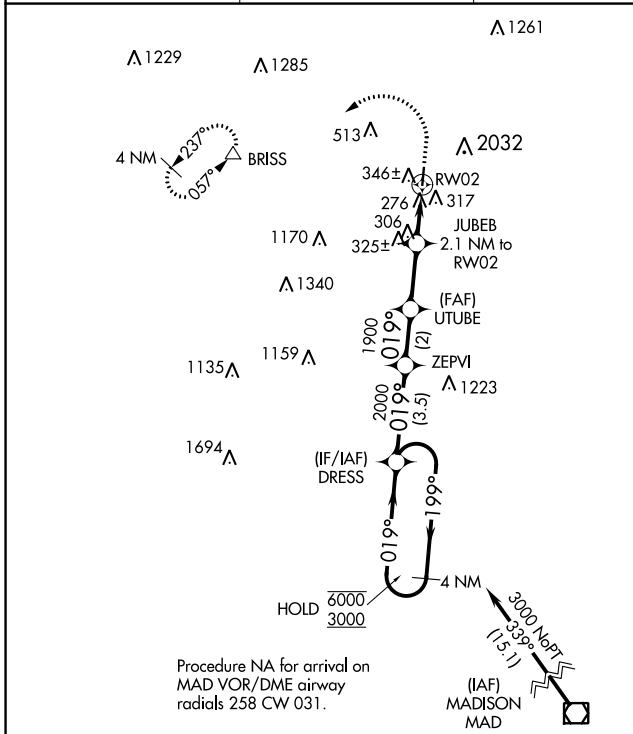
# RNAV (GPS) RWY 2

ROBERTSON FIELD (4B8)

**RNP APCH.**  
**NA** Circling NA east of Rwy 02-20. Circling Rwy 20 NA at night. Rwy 2 helicopter visibility reduction below 1 SM NA. Use Meriden altimeter setting, when not received, use Hartford altimeter setting and increase all MDA 20 feet, increase LP Cat C visibility 1/8 SM.

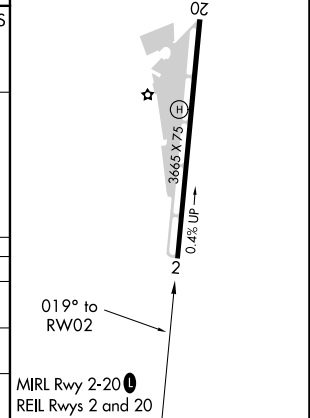
**MISSED APPROACH:** Climb to 1900 then climbing left turn to 3000 direct BRISS and hold.

MMK ASOS <b>134.925</b>	YANKEE APP CON <b>123.95 290.55</b>	CLNC DEL <b>134.5</b>	UNICOM <b>122.8 (CTAF)</b>
----------------------------	--	--------------------------	-------------------------------



ELEV 202	TDZE 201
----------	----------

CATEGORY	A	B	C	D
LP MDA	580-1 379 (400-1)			NA
LNAV MDA	660-1	459 (500-1)	660-1 3/8 459 (500-1 3/8)	NA
<b>C</b> CIRCLING	860-1	658 (700-1)	1020-2 1/2 818 (900-2 1/2)	NA



NE-1, 15 JUL 2021 to 12 AUG 2021

NE-1, 15 JUL 2021 to 12 AUG 2021