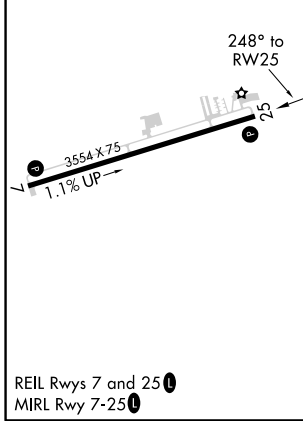
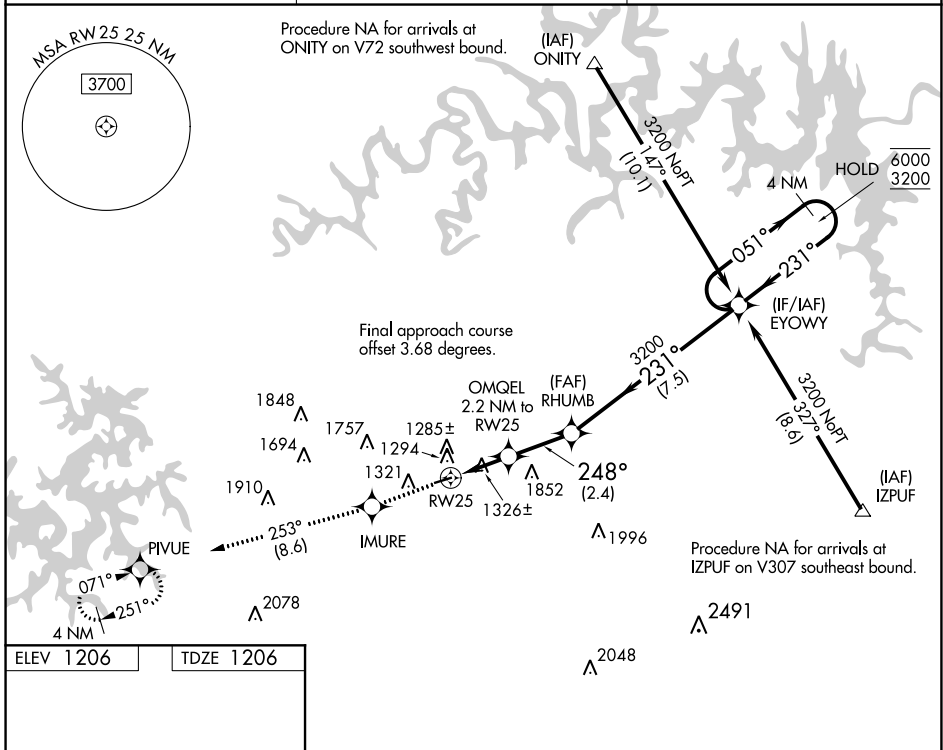


WAAS CH 86442	APP CRS 248°	Rwy Idg TDZE 1206	3554
W25A		Apt Elev 1206	

RNAV (GPS) RWY 25

CARROLL COUNTY (4M1)

RNP APCH.		MISSED APPROACH: Climb to 3300 direct IMURE and on track 253° to PIVUE and hold.
<p>NA Rwy 25 helicopter visibility reduction below 3/4 SM NA. Use Branson altimeter setting; when not received, use Rogers altimeter setting and increase all MDA 20 feet.</p>		
BBG AWOS-3 124.625	RAZORBACK APPROACH* 126.6 305.2	CTAF 122.90



3300	IMURE	Ir 253°	PIVUE	VGSI and descent angles not coincident (VGSI Angle 3.00/TCH 22).
			RHUMB	EYOWY 4 NM Holding Pattern
			OMQEL TCH 40 2.2 NM to RWY 25	231° ← 3200 → 051° → 6000
			2180	← 231° → 3200
			← 2.2 NM →	← 2.4 NM →
				← 7.5 NM →
CATEGORY	A	B	C	D
LP MDA	1660-1	454 (500-1)		NA
LNAV MDA	1660-1	454 (500-1)		NA
C CIRCLING	1700-1 494 (500-1)	1980-1 774 (800-1)		NA

SC-1, 15 JUL 2021 to 12 AUG 2021

SC-1, 15 JUL 2021 to 12 AUG 2021