

WAAS CH <b>78301</b> <b>W13A</b>	APP CRS <b>133°</b>	Rwy Idg <b>4999</b> TDZE <b>18</b> Apt Elev <b>18</b>
--	------------------------	---

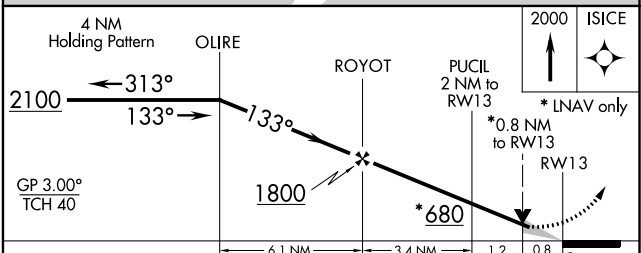
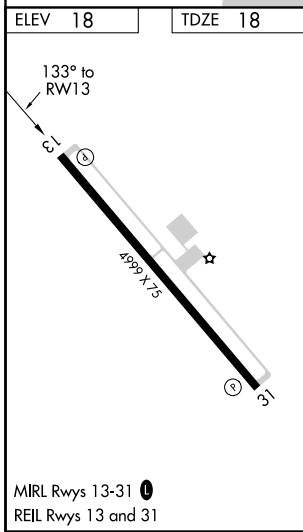
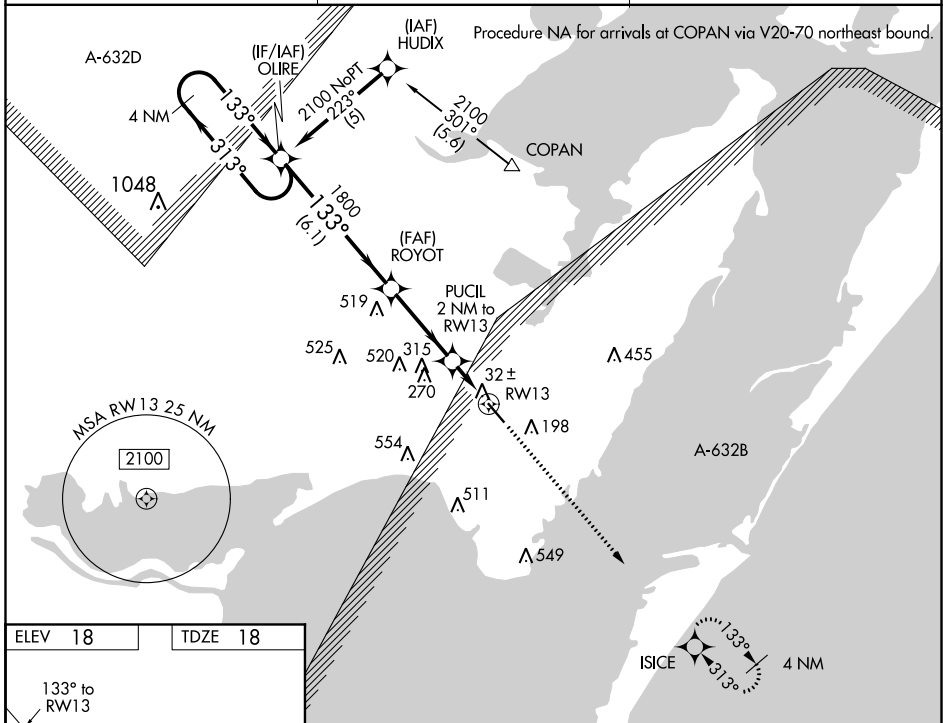
# RNAV (GPS) RWY 13

MCCAMPBELL-PORTER (TFP)

**⚠** Baro-VNAV NA when using Mustang Beach altimeter setting. DME/DME RNP-0.3 NA. For uncompensated Baro-VNAV systems, LNAV/VNAV NA below -15°C (5°F) or above 49°C (120°F). When local altimeter setting not received, use Mustang Beach altimeter setting and increase LPV DA to 291 feet; LNAV/VNAV DA to 309 feet; and all MDAs 40 feet. VDP NA when using Mustang Beach altimeter setting.

**MISSED APPROACH:**  
Climb to 2000 direct ISICE and hold.

AWOS-3 <b>118.775</b>	CORPUS APP CON <b>120.9 348.725</b>	UNICOM <b>122.7 (CTAF) 0</b>
--------------------------	--	---------------------------------



CATEGORY	A	B	C	D
LPV DA		268-1	250 (300-1)	
LNAV/VNAV DA		286-1	268 (300-1)	
LNAV MDA		300-1	282 (300-1)	
CIRCLING	520-1	502 (600-1)	520-1½ 502 (600-1½)	580-2 562 (600-2)

SC-3, 15 JUL 2021 to 12 AUG 2021

SC-3, 15 JUL 2021 to 12 AUG 2021