

WAAS CH <b>50528</b> <b>W17A</b>	APP CRS <b>169°</b>	Rwy Idg TDZE <b>1384</b> Apt Elev <b>1384</b>	<b>4377</b>
--	------------------------	---	-------------

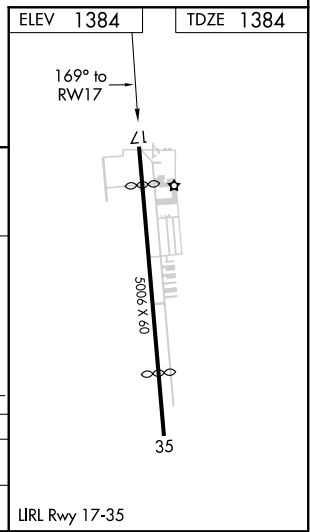
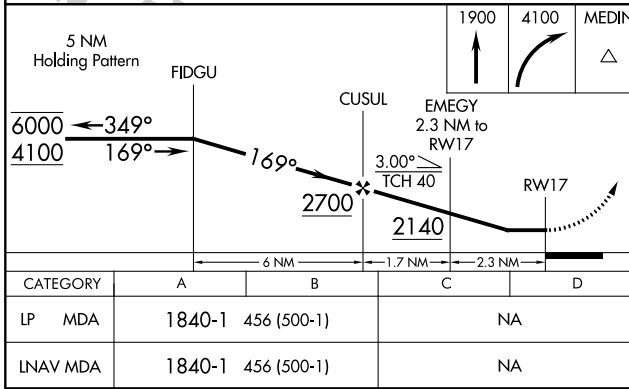
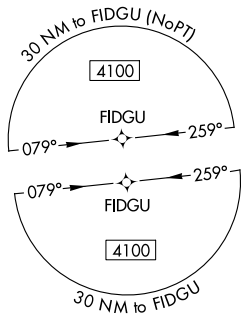
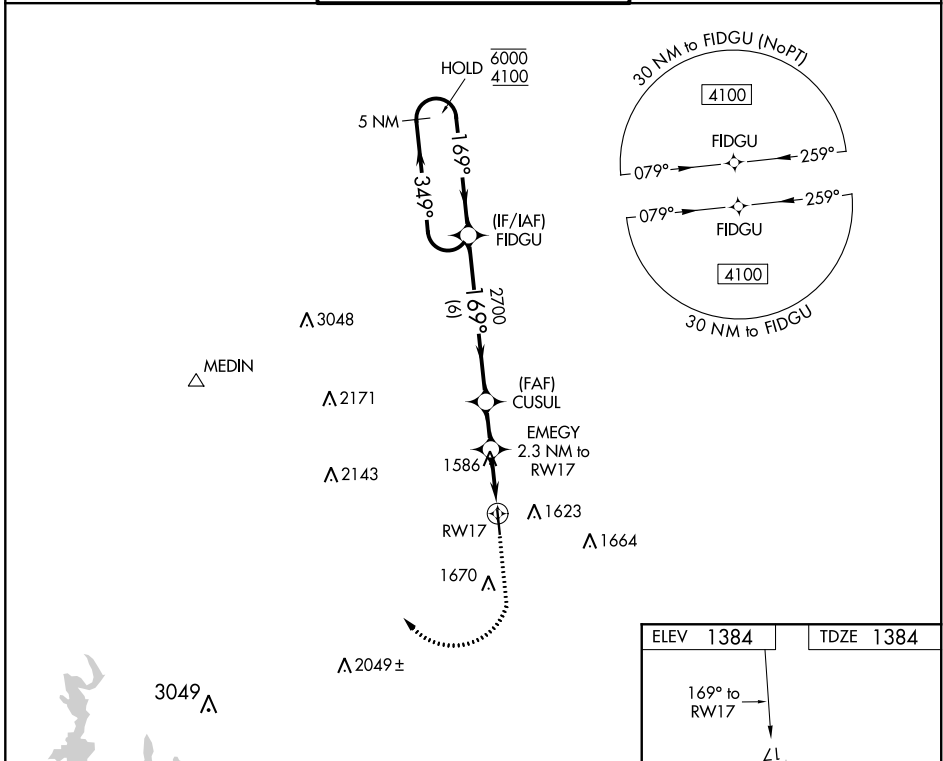
# RNAV (GPS) RWY 17

BOERNE STAGE FIELD (5C1)

RNP APCH.  
 ▼ Rwy 17 helicopter visibility reduction below 1 SM NA. When local altimeter setting not received, use KSAT altimeter setting and increase all MDA 120 feet. Procedure NA at night.  
 ▲

MISSED APPROACH: Climb to 1900 then climbing right turn to 4100 direct MEDIN.

AWOS-3 <b>118.725</b>	SAN ANTONIO APP CON <b>125.1 307.0</b>	UNICOM <b>123.0 (CTAF)</b>
--------------------------	---	-------------------------------



SC-3, 15 JUL 2021 to 12 AUG 2021

SC-3, 15 JUL 2021 to 12 AUG 2021