

APP CRS 152°	Rwy Idg TDZE Apt Elev	N/A N/A 8153
------------------------	-----------------------------	---

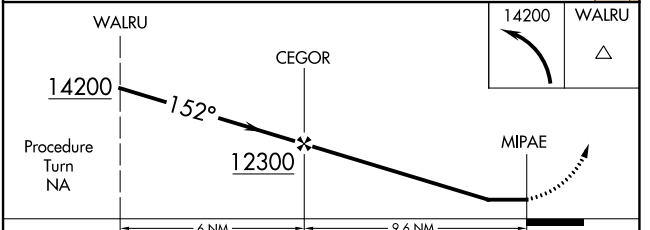
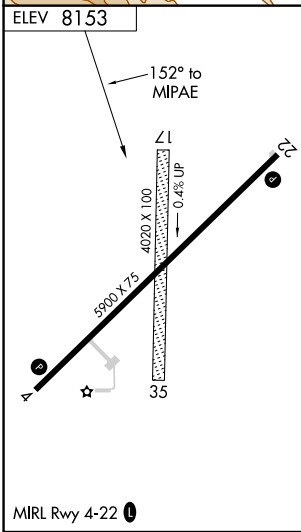
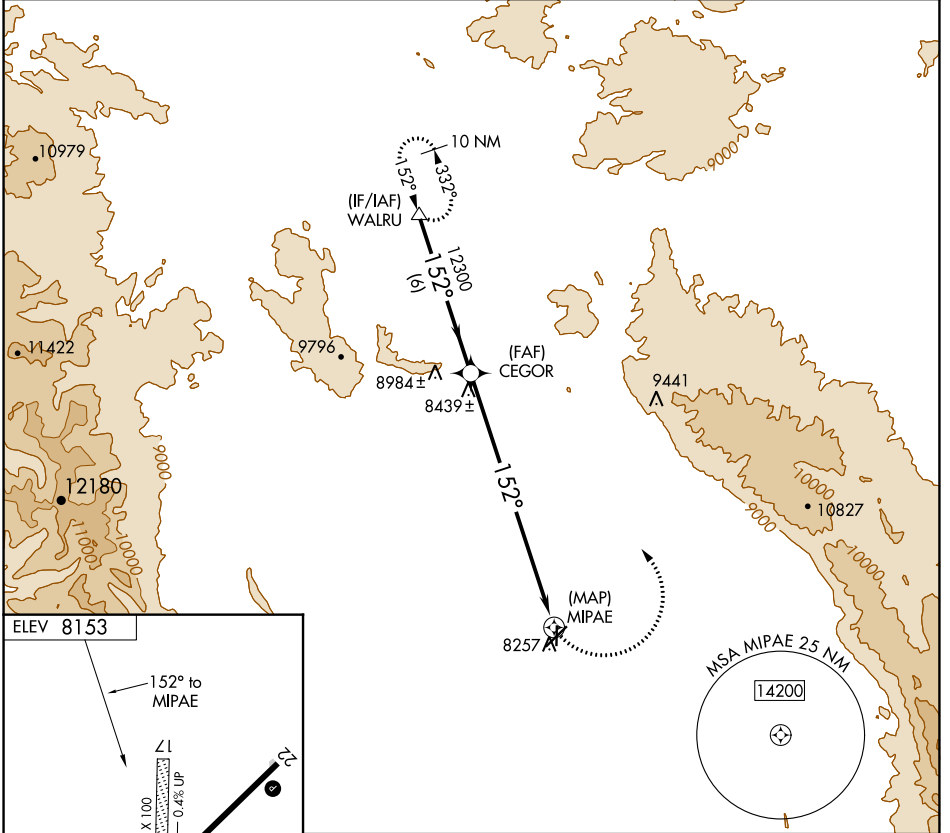
RNAV (GPS)-A

WALDEN-JACKSON COUNTY (33V)

▽ When local altimeter setting not received, procedure NA. Circling NA southeast of Rwy 4-22. Circling to Rwy 17 and 35 NA. DME/DME RNP-0.3 NA.

△ NA MISSED APPROACH: Climbing left turn to 14200 direct WALRU and hold, continue climb-in-hold to 14200.

AWOS-3 118.625	DENVER CENTER 126.5 371.85	CTAF 122.9 0
--------------------------	--------------------------------------	-------------------------------



CATEGORY	A	B	C	D
CIRCLING	8880-1	727 (800-1)	8880-2 727 (800-2)	NA

SW-1, 15 JUL 2021 to 12 AUG 2021

SW-1, 15 JUL 2021 to 12 AUG 2021