

APP CRS 249°	Rwy Idg 3050
	TDZE 1755
	Apt Elev 1755

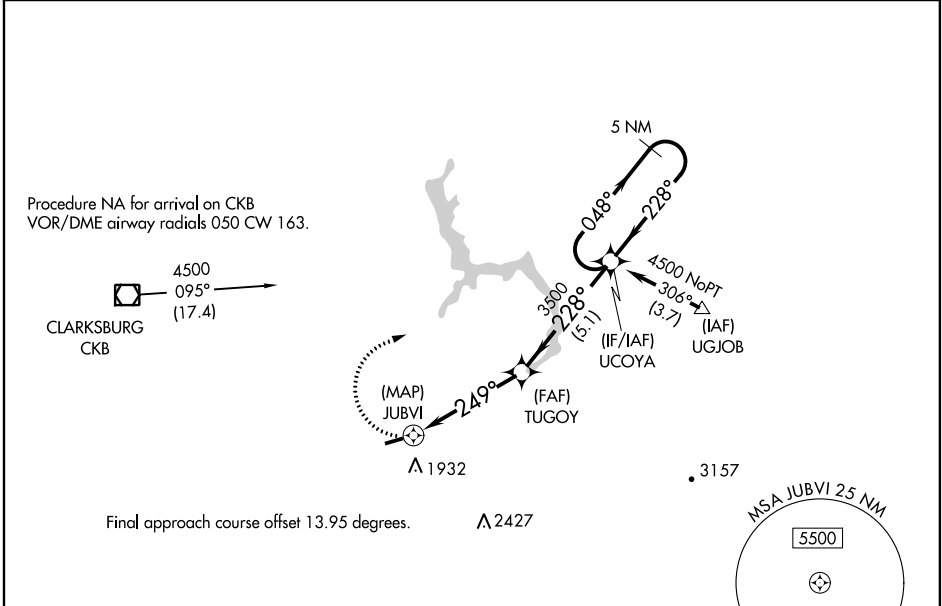
RNAV (GPS) RWY 26

PHILIPPI/BARBOUR COUNTY RGNL (79D)

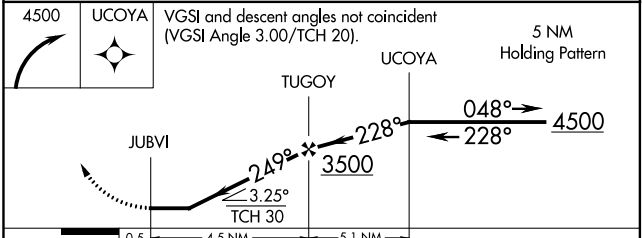
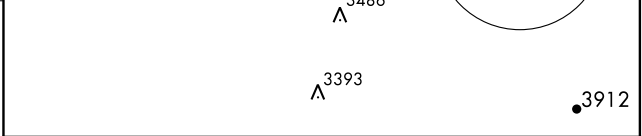
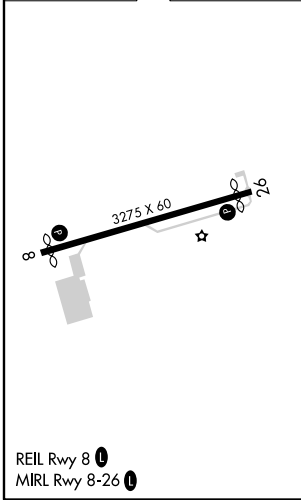
▼ Rwy 26 helicopter visibility reduction below 1 SM NA.
▲ NA DME/DME RNP-0.3 NA. Procedure NA at night.
 Use Clarksburg altimeter setting, when not received,
 use Buckhannon altimeter setting.

MISSED APPROACH: Climbing right
 turn to 4500 direct UCOYA and hold.

CKB ASOS 127.825	CLARKSBURG APP CON ★ 121.15 284.65	CTAF 122.9 0
----------------------------	--	------------------------



ELEV 1755	TDZE 1755
-----------	-----------



CATEGORY	A	B	C	D
LNAV MDA	2460-1	705 (800-1)	NA	
C CIRCLING	2520-1 765 (800-1)	2520-1¼ 765 (800-1¼)	NA	

NE-4, 15 JUL 2021 to 12 AUG 2021

NE-4, 15 JUL 2021 to 12 AUG 2021