

LOC/DME I-PUK <b>111.15</b> Chan 48 (Y)	APP CRS <b>162°</b>	Rwy ldg TDZE <b>10000</b> <b>69</b> Apt Elev <b>69</b>
---	------------------------	--

# ILS or LOC RWY 16

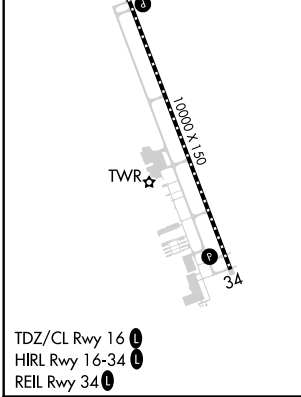
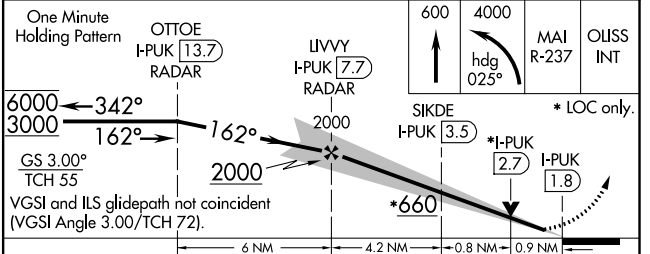
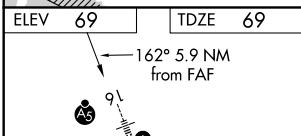
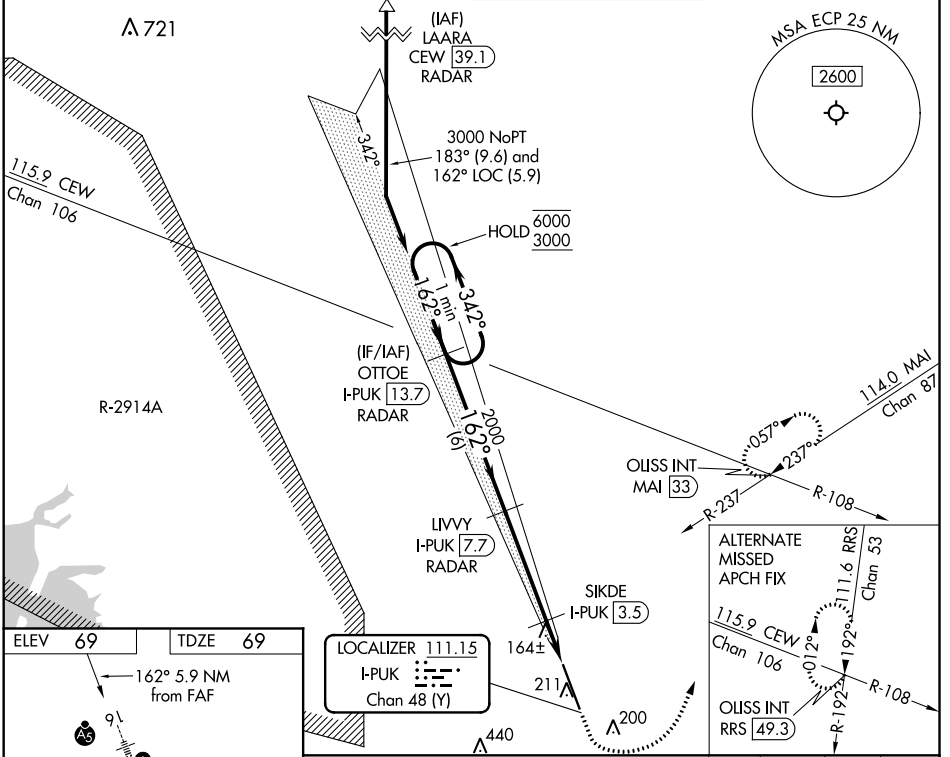
NORTHWEST FLORIDA BEACHES INTL (ECP)

DME required for procedure entry. DME required.

**⚠** For inop ALS, increase S-LOC 16 Cat C/D visibility to RVR 5500.  
**⚠** #RVR 1800 authorized with use of FD or AP or HUD to DA.

MALSRL MISSED APPROACH: Climb to 600 then climbing left turn to 4000 on heading 025° and on MAI VORTAC R-237 to OLISS INT/MAI 33 DME and hold, continue climb-in-hold to 4000.

ATIS <b>119.975</b>	TYNDALL APP CON* <b>125.2</b> (N above 5000')	PANAMA CITY TOWER* <b>118.95</b> (CTAF) <b>0</b>	GND CON <b>121.65</b>
------------------------	--	---	--------------------------



CATEGORY	A	B	C	D
S-ILS 16 #		269/24	200 (200-½)	
S-LOC 16		420/24	351 (400-½)	
<b>C</b> CIRCLING	520-1	451 (500-1)	520-1½ 451 (500-1½)	620-2 551 (600-2)

SE-3, 15 JUL 2021 to 12 AUG 2021

SE-3, 15 JUL 2021 to 12 AUG 2021