

WAAS CH <b>63017</b> <b>W16A</b>	APP CRS <b>162°</b>	Rwy Idg <b>10000</b> TDZE <b>69</b> Apt Elev <b>69</b>
--	------------------------	--

# RNAV (GPS) RWY 16

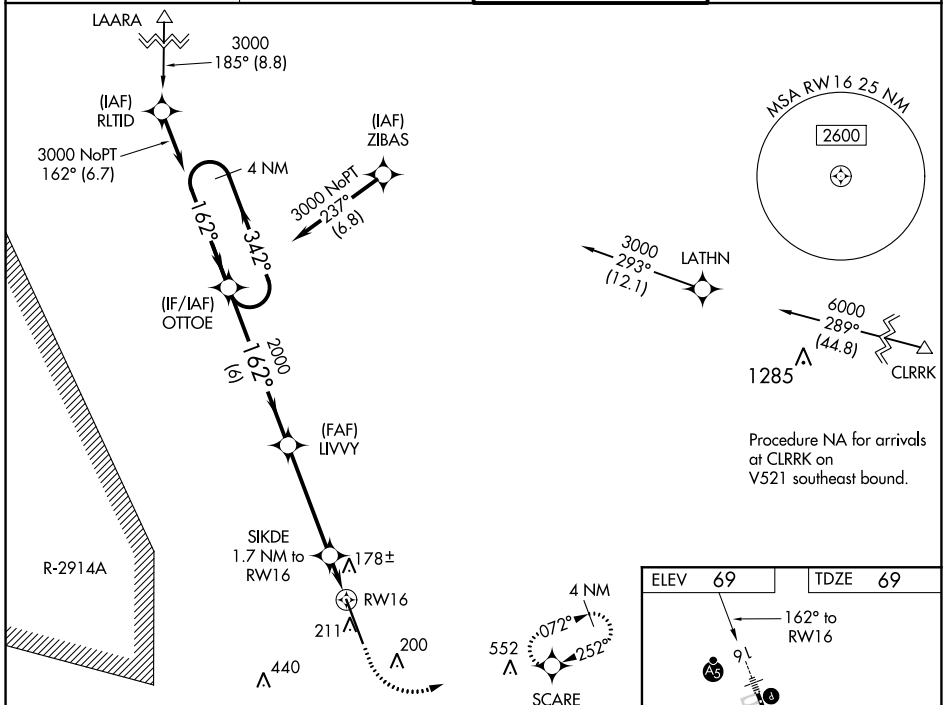
NORTHWEST FLORIDA BEACHES INTL (ECP)

**⚠** For uncompensated Baro-VNAV systems, LNAV/VNAV NA below -15°C (5°F) or above 54°C (130°F). DME/DME RNP-0.3 NA. When local altimeter setting not received, use Destin altimeter setting and increase all DA 88 feet, increase all MDA 100 feet, and increase LNAV/VNAV all Cats visibility and LNAV Cat C and D visibility 3/8 mile. Baro-VNAV and VDP NA when using Destin altimeter setting. For inop MALSR, increase LNAV Cat C and D visibility to 1 mile. For inop MALSR when using Destin altimeter setting, increase all LPV visibility to 7/8 mile, increase all LNAV/VNAV visibility to 1 3/8 mile, and increase LNAV Cat C and D visibility to 1 3/8 mile.

**MALSR**

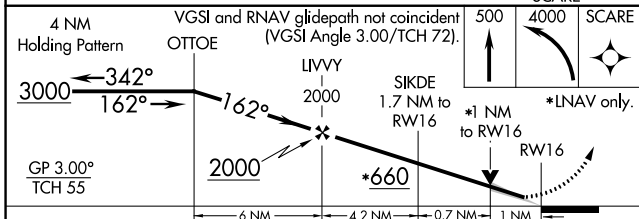
**MISSED APPROACH:** Climb to 500 then climbing left turn to 4000 direct SCARE and hold, continue climb-in-hold to 4000.

ATIS <b>119.975</b>	TYNDALL APP CON* <b>125.2</b> (N above 5000')	PANAMA CITY TOWER* <b>118.95</b> (CTAF) <b>0</b>	GND CON <b>121.65</b>
------------------------	--	---	--------------------------



SE-3, 15 JUL 2021 to 12 AUG 2021

SE-3, 15 JUL 2021 to 12 AUG 2021



ELEV 69	TDZE 69
---------	---------

TWR

1000-150

34

TDZ/CL Rwy 16 **0**

HRL Rwy 16-34 **0**

REIL Rwy 34 **0**

CATEGORY	A	B	C	D
LPV DA		269-1/2	200 (200-1/2)	
LNAV/VNAV DA		478-7/8	409 (500-7/8)	
LNAV MDA	440-1/2	371 (400-1/2)	440-5/8	371 (400-5/8)
<b>C</b> CIRCLING	520-1	451 (500-1)	520-1 1/2	620-2
			451 (500-1 1/2)	551 (600-2)