

WAAS CH 53334 W09A	APP CRS 090°	Rwy Idg TDZE 1478 Apt Elev 1478
--	------------------------	---

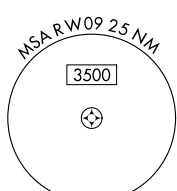
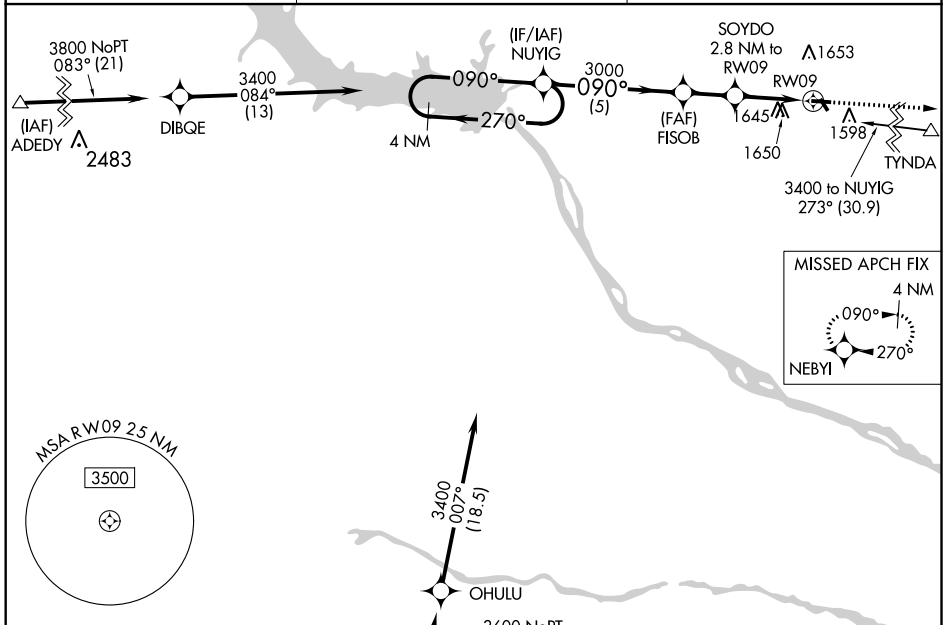
RNAV (GPS) RWY 9

WAGNER MUNI (AGZ)

NA Circling NA to Rwy's 14 and 32. Baro-VNAV NA. DME/DME RNP-0.3 NA. Use Yankton altimeter setting; when not received use O'Neill altimeter setting and increase all DA 51 feet, all MDA 60 feet and increase LPV all Cats visibility ½ mile, and LNAV/VNAV all Cats visibility ½ mile.

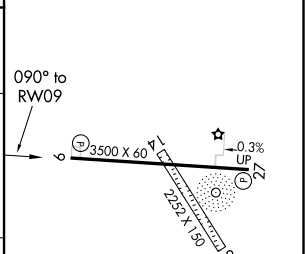
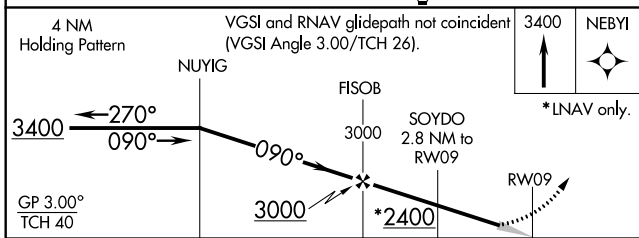
MISSED APPROACH: Climb to 3400 direct NEBYI and hold.

YKN AWOS-3PT 119.05	MINNEAPOLIS CENTER 128.0 257.95	AUNICOM 122.8 (CTAF) 1
-------------------------------	---	----------------------------------



Procedure NA for arrivals on ONL VORTAC airway radials 055 CW 083. (IAF) O'NEILL ONL 3600 NoPT 007° (18.5)

ELEV 1478	TDZE 1478
-----------	-----------



CATEGORY	A	B	C	D
LPV DA	1847-1¼	369 (400-1¼)		NA
LNAV/VNAV DA	2053-2	575 (600-2)		NA
LNAV MDA	2020-1	542 (600-1)		NA
C CIRCLING	2080-1	602 (700-1)		NA

MIRL Rwy 9-27 1

NC-1, 15 JUL 2021 to 12 AUG 2021

NC-1, 15 JUL 2021 to 12 AUG 2021