

APP CRS <b>214°</b>	Rwy Idg TDZE Apt Elev	<b>N/A</b> <b>N/A</b> <b>526</b>
------------------------	-----------------------------	--

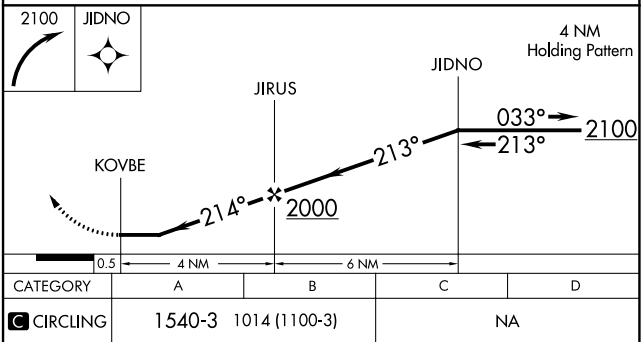
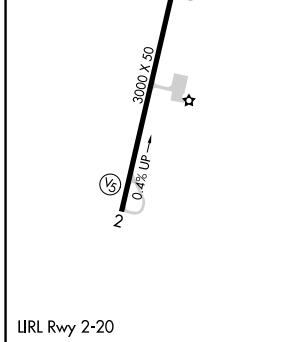
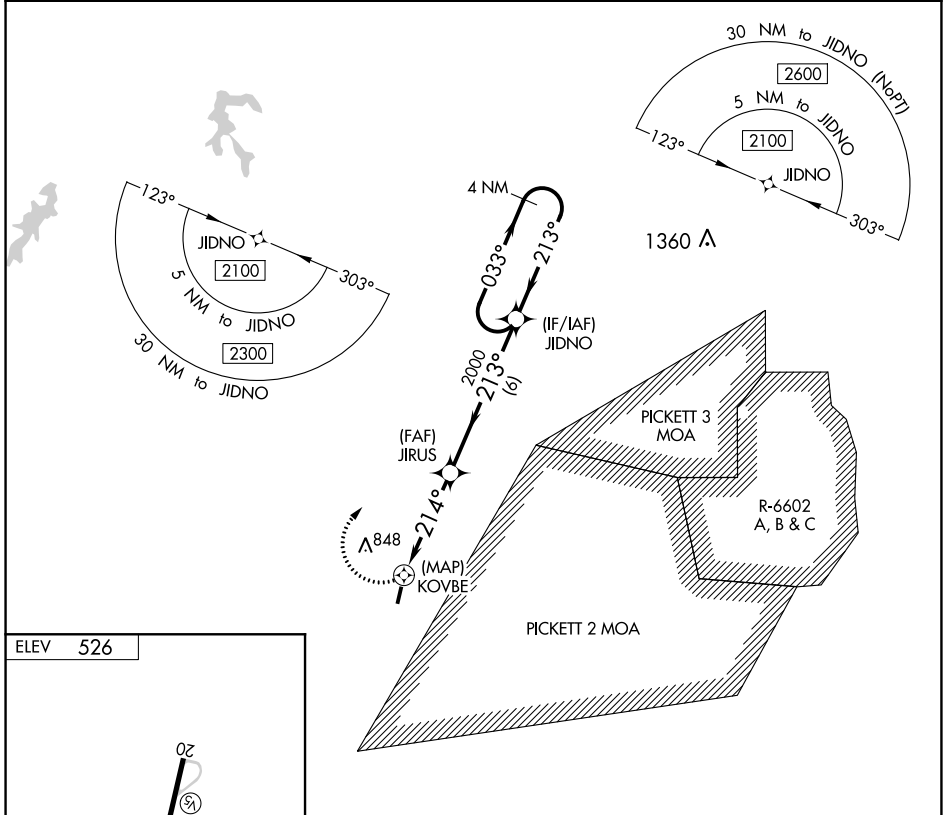
# RNAV (GPS)-B

LUNENBURG COUNTY (W31)

**⚠** Helicopter visibility reduction below 1 SM NA. DME/DME RNP-0.3 NA. Procedure NA at night. When local altimeter setting not received, use Blackstone altimeter setting and increase all MDA 60 feet.

**MISSED APPROACH:** Climbing right turn to 2100 direct JIDNO and hold.

AWOS-3 <b>123.875</b>	WASHINGTON CENTER <b>118.75 377.1</b>	UNICOM <b>122.7 (CTAF)</b>
--------------------------	--	-------------------------------



LRL Rwy 2-20	ELEV 526	2100 JIDNO	4 NM Holding Pattern	
CATEGORY	A	B	C	D
<b>C</b> CIRCLING	1540-3	1014 (1100-3)	NA	

NE-3, 15 JUL 2021 to 12 AUG 2021

NE-3, 15 JUL 2021 to 12 AUG 2021