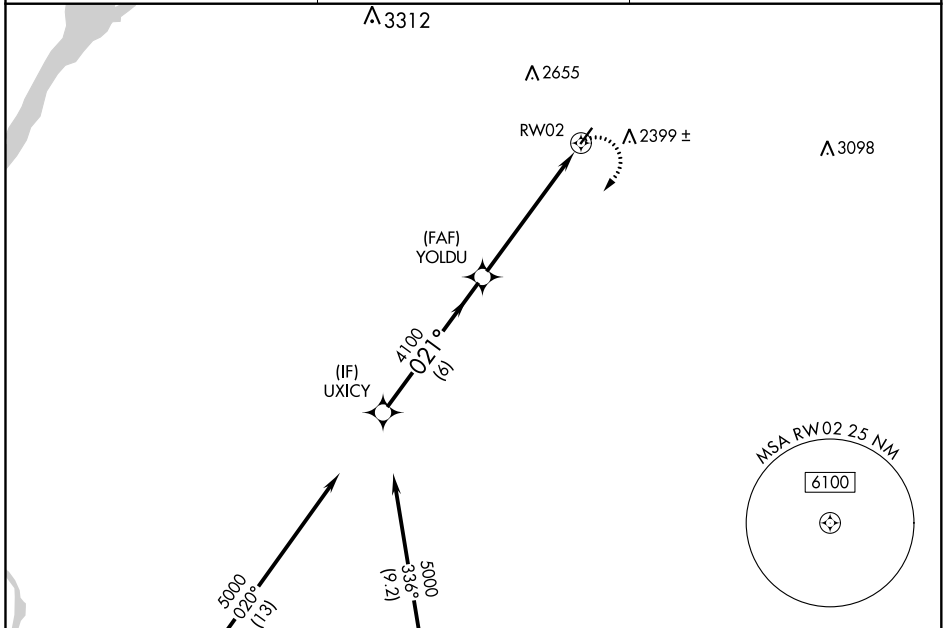


APP CRS	Rwy Idg	N/A
021°	TDZE	N/A
	Apt Elev	2183

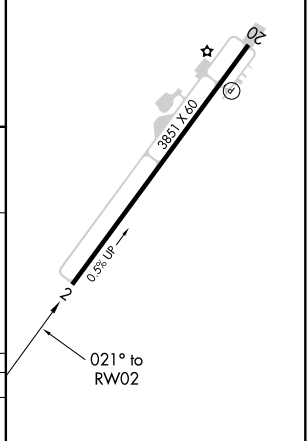
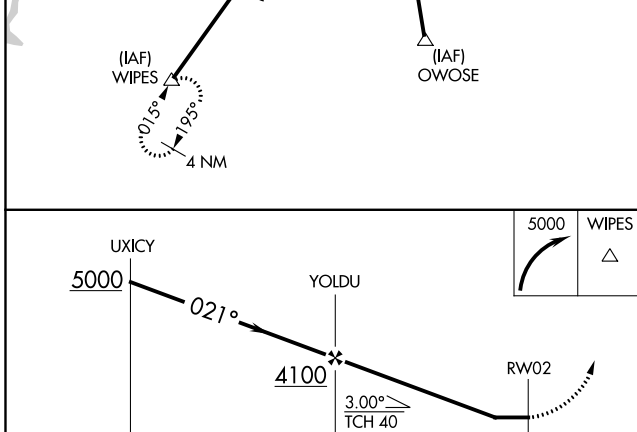
RNAV (GPS)-A
WILBUR (2S8)

RNP APCH.	MISSED APPROACH: Climbing right turn to 5000 direct WIPES and hold.
<p>▼ Circling Rwy 20 NA at night. Rwy 20 helicopter visibility reduction below 1 SM NA. When local altimeter not received, use Ephrata altimeter setting and increase all MDAs 240 feet and increase Cat B visibility ¼ SM.</p>	

AWOS-2 124.175	GRANT COUNTY APP CON * 126.4 379.95	CTAF 122.9
--------------------------	---	----------------------



ELEV 2183
MIRL Rwy 2-20
REIL Rwy 2



CATEGORY	A	B	C	D
☐ CIRCLING	3000-1¼	817 (900-1¼)	NA	

NW-1, 15 JUL 2021 to 12 AUG 2021

NW-1, 15 JUL 2021 to 12 AUG 2021