

WAAS CH 90442 W10A	APP CRS 101°	Rwy Idg TDZE Apt Elev	4000 728 732
--	------------------------	-----------------------------	---

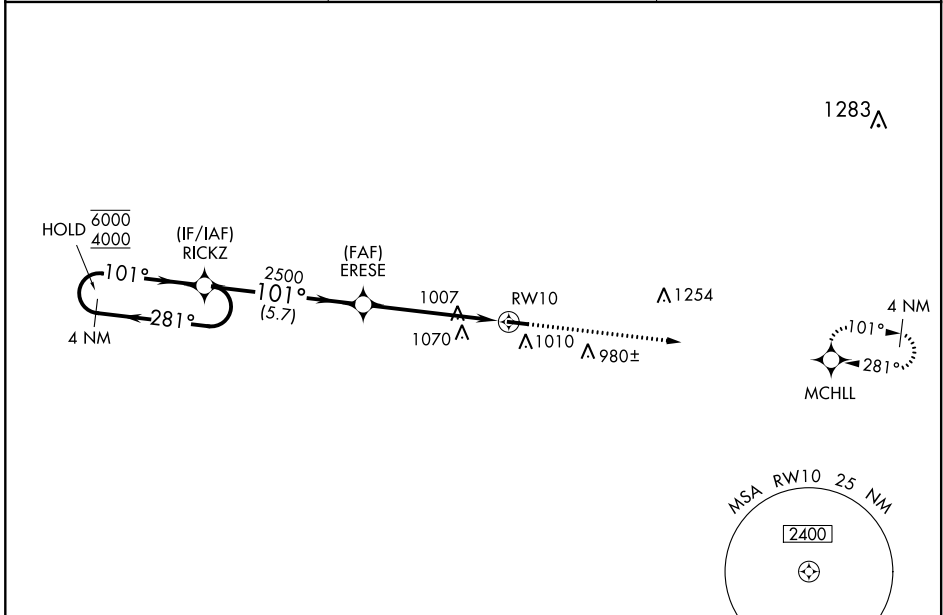
RNAV (GPS) RWY 10

BRECKINRIDGE COUNTY (I93)

RNP APCH. MISSED APPROACH: Climb to 4000 direct MCHLL and hold, continue climb-in-hold to 4000.

NA Rwy 10 helicopter visibility reduction below 3/4 SM NA. Baro-VNAV NA. Use Fort Knox altimeter setting, when not received, use Elizabethtown altimeter setting and increase LPV DA to 1043, LNAV/VNAV DA to 1191 and all MDA 20 feet.

FTK ASOS ★ 109.6	LOUISVILLE APP CON 132.075 327.0	CTAF 122.9 0
----------------------------	--	------------------------



ELEV 732	TDZE 728
----------	----------

4000	MCHLL	VGSi and RNAV glidepath not coincident (VGSi Angle 3.10/TCH 34).		4 NM Holding Pattern
		GP 3.10° TCH 34		
CATEGORY	A	B	C	D
LPV DA	1036-1		308 (400-1)	
LNAV/VNAV DA	1184-1 3/8		456 (500-1 3/8)	
LNAV MDA	1380-1	652 (700-1)	1380-1 7/8	652 (700-1 7/8)
C CIRCLING	1380-1 648 (700-1)	1480-1 748 (800-1)	1480-2 1/4 748 (800-2 1/4)	1480-2 1/2 748 (800-2 1/2)

MIRL Rwy 10-28 **0**
REIL Rwy 10 and 28 **0**

SE-1, 15 JUL 2021 to 12 AUG 2021

SE-1, 15 JUL 2021 to 12 AUG 2021