

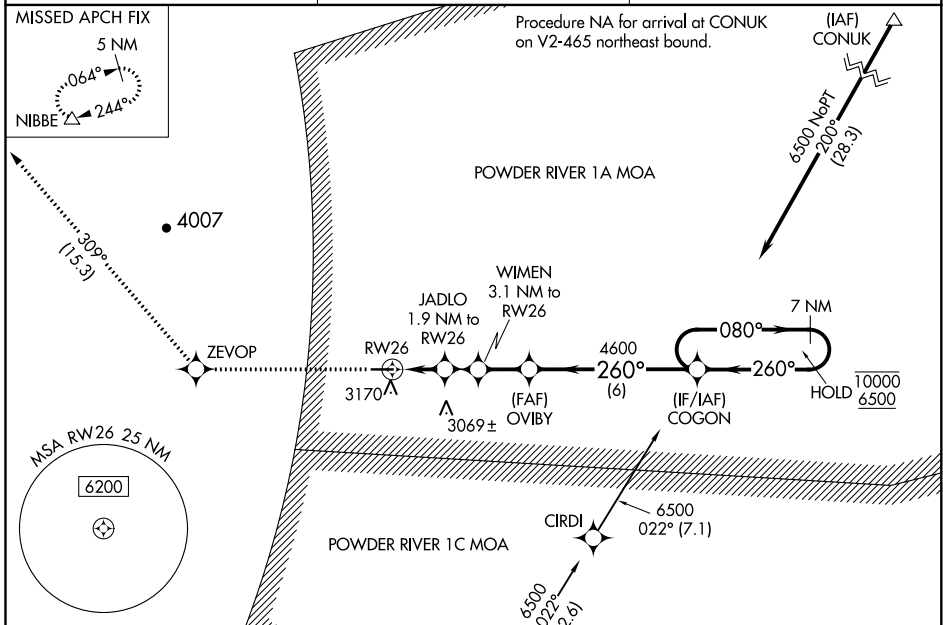
WAAS CH <b>65644</b> <b>W26A</b>	APP CRS <b>260°</b>	Rwy Idg TDZE Apt Elev	<b>4491</b> <b>3015</b> <b>3025</b>
--	------------------------	-----------------------------	---

# RNAV (GPS) RWY 26

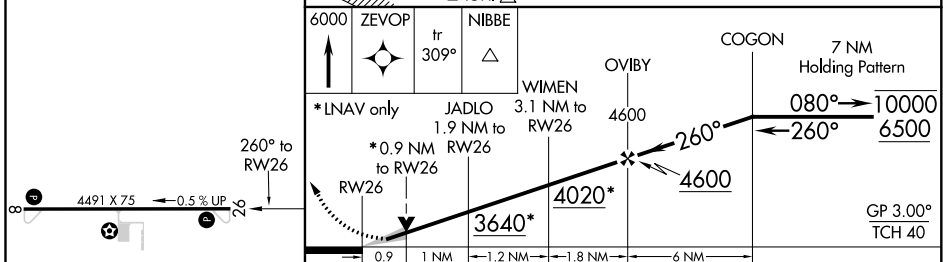
BIG HORN COUNTY (ØØT)

RNP APCH.	MISSED APPROACH: Climb to 6000 direct ZEVOP and on track 309° to NIBBE and hold.
<p>For uncompensated Baro-VNAV systems, LNAV/VNAV NA below -20°C or above 54°C.</p>	

AWOS-3 <b>118.325</b>	SALT LAKE CENTER <b>132.425 317.45</b>	UNICOM <b>122.8 (CTAF)</b>
--------------------------	---	-------------------------------



ELEV 3025	TDZE 3015
-----------	-----------



CATEGORY	A	B	C	D
LPV DA	3215-1	200 (200-1)		NA
LNAV/VNAV DA	3265-1	250 (300-1)		NA
LNAV MDA	3320-1	305 (300-1)		NA
CIRCLING	3480-1	3500-1		NA
	455 (500-1)	475 (500-1)		

NW-1, 15 JUL 2021 to 12 AUG 2021

NW-1, 15 JUL 2021 to 12 AUG 2021