

WAAS CH 70735 W11A	APP CRS 111°	Rwy Idg TDZE Apt Elev	3998 100 100
--	------------------------	-----------------------------	---

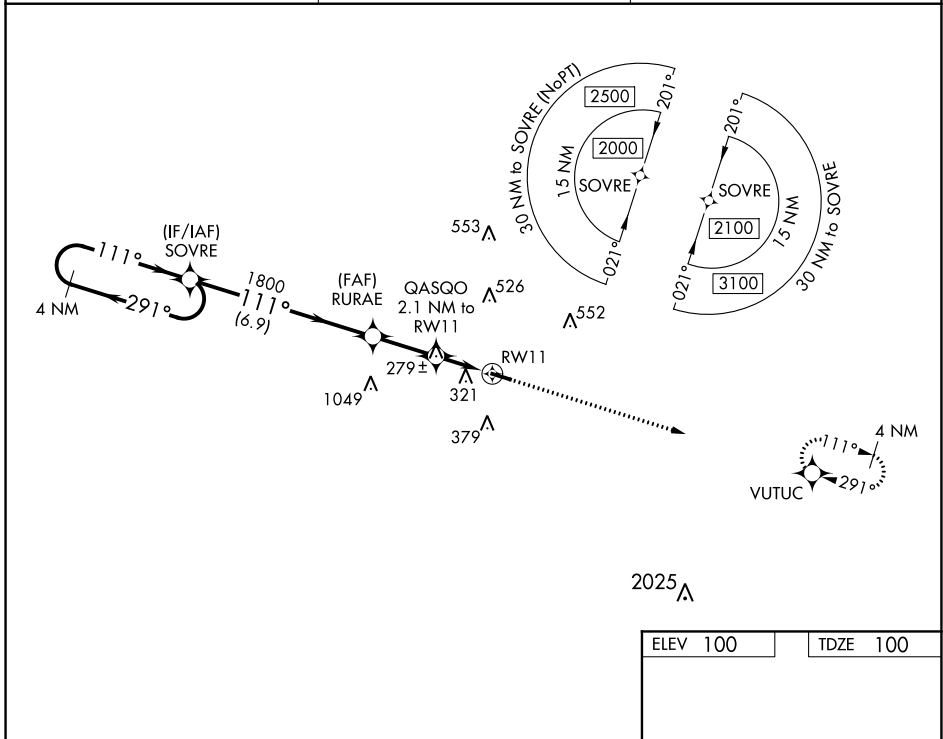
RNAV (GPS) RWY 11

GENEVA MUNI (33J)

▼ DME/DME RNP-0.3 NA. Procedure NA at night. Rwy 11 helicopter visibility reduction below 1 SM NA. **▲ NA** Use Cairns AAF altimeter setting, when not received, use Dothan altimeter setting and increase all MDA 40 feet, increase LP and LNAV Cat C visibility $\frac{1}{8}$ SM and Circling Cat C visibility $\frac{1}{4}$ mile.

MISSED APPROACH: Climb to 2000 direct VUTUC and hold.

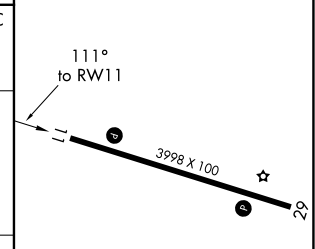
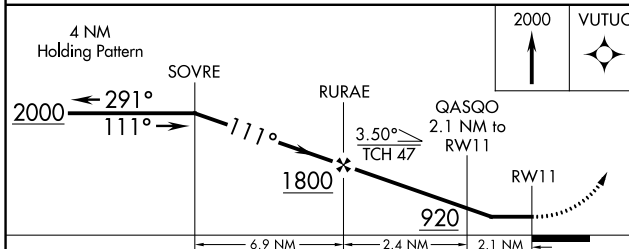
KOZR AWOS-3 111.2 316.15	CAIRNS APP CON * 133.75 270.35	UNICOM 122.8 (CTAF) 0
------------------------------------	--	---------------------------------



SE-4, 15 JUL 2021 to 12 AUG 2021

SE-4, 15 JUL 2021 to 12 AUG 2021

ELEV 100	TDZE 100
----------	----------



CATEGORY	A	B	C	D
LP MDA	600-1	500 (500-1)	600-1 $\frac{3}{8}$ 500 (500-1 $\frac{3}{8}$)	NA
LNAV MDA	640-1	540 (600-1)	640-1 $\frac{1}{2}$ 540 (600-1 $\frac{1}{2}$)	NA
C CIRCLING	700-1 600 (600-1)	720-1 620 (700-1)	900-2 $\frac{1}{4}$ 800 (800-2 $\frac{1}{4}$)	NA

MIRL Rwy 11-29 0