

APP CRS	Rwy Idg	<b>3998</b>
<b>291°</b>	TDZE	<b>100</b>
	Apt Elev	<b>100</b>

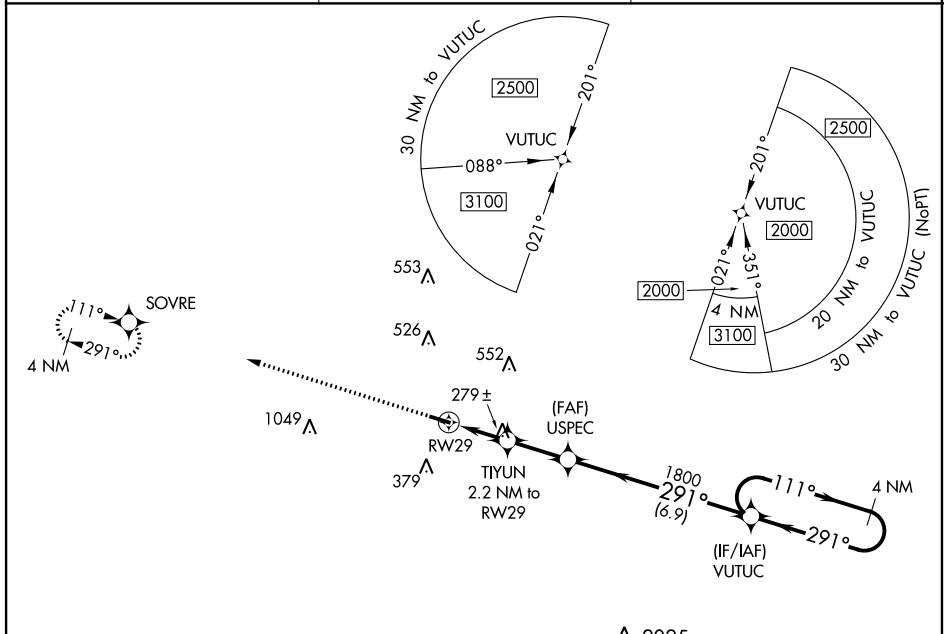
# RNAV (GPS) RWY 29

GENEVA MUNI (33J)

**⚠ NA** DME/DME RNP-0.3 NA. Procedure NA at night. Use Cairns AAF altimeter setting, when not received, use Dothan altimeter setting and increase all MDA 40 feet, and increase all Cat C visibilities ¼ SM. Rwy 29 helicopter visibility reduction below 1 SM NA.

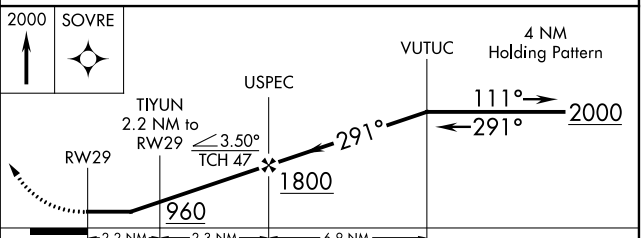
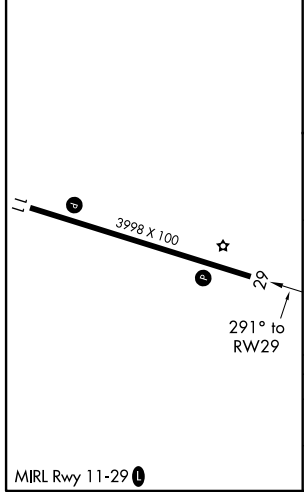
**MISSED APPROACH:** Climb to 2000 direct SOVRE and hold.

KOZR AWOS-3 <b>111.2 316.15</b>	CAIRNS APP CON ★ <b>133.75 270.35</b>	UNICOM <b>122.8 (CTAF) 0</b>
------------------------------------	--	---------------------------------



A 2025

ELEV 100	TDZE 100
----------	----------



CATEGORY	A	B	C	D
LNAV MDA	600-1	500 (500-1)	600-1 3/8 500 (500-1 3/8)	NA
<b>C</b> CIRCLING	700-1 600 (600-1)	720-1 620 (700-1)	900-2 1/4 800 (800-2 1/4)	NA

SE-4, 15 JUL 2021 to 12 AUG 2021

SE-4, 15 JUL 2021 to 12 AUG 2021