

AKRON-CANTON RGNL (CAK)(KCAK) P (ARNG) 10 SE UTC-5(-4DT) N40°54.90' W81°26.62'

DETROIT
H-10G, L-29B
IAP, AD

1226 B LRA ARFF Index—See Remarks NOTAM FILE CAK MON Airport

RWY 05-23: H8204X150 (ASPH-GRVD) S-120, D-160, 2S-175,

2D-250 PCN 133F/C/X/T HIRL

RWY 05: MALSR. PAPI(P4L)—GA 3.0° TCH 50'. RVR-TR 0.5% up.

RWY 23: MALSR. PAPI(P4L)—GA 3.0° TCH 47'. RVR-TR 0.6% down.

RWY 01-19: H7601X150 (ASPH-GRVD) S-120, D-160, 2S-175,

2D-250 PCN 85 F/C/X/T HIRL

RWY 01: MALSR. RVR-TR

RWY 19: MALSR. PAPI(P4L)—GA 3.0° TCH 53'. RVR-TR Thld dspcd 601'.

LAND AND HOLD—SHORT OPERATIONS

LDG RWY	HOLD—SHORT POINT	AVBL LDG DIST
RWY 05	01-19	5723
RWY 19	05-23	3100

RUNWAY DECLARED DISTANCE INFORMATION

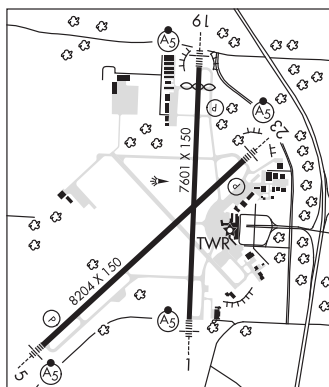
RWY 01: TORA-7601 TODA-7601 ASDA-7007 LDA-7007

RWY 05: TORA-8204 TODA-8204 ASDA-8204 LDA-8204

RWY 19: TORA-7601 TODA-7601 ASDA-7601 LDA-7007

RWY 23: TORA-8204 TODA-8204 ASDA-8204 LDA-8204

SERVICE: S4 FUEL 100LL, JET A OX 1, 2 MILITARY— FUEL A, A+ (C330-494-6104) (NC-100LL).



AIRPORT REMARKS: Attended continuously. All acft taxiing on Air Camis

Ramp and north hangar areas not visible from twr. Deer and birds on and in/ovf arpt. Class I, ARFF Index B, ARFF svc not avbl 0100-0500 local (0600-1000Z±) daily. One hour PPR for unsked air carrier ops, call arpt manager 330-499-4059. Twy E east of Twy B clsd to acft over 118' wingspan. Non-commercial landing fee: multi-engine only. Flight Notification Service (ADCUS) avbl.

AIRPORT MANAGER: 330-754-5233

WEATHER DATA SOURCES: ASOS (330) 493-5260

COMMUNICATIONS: ATIS 121.05 UNICOM 122.95

Ⓡ CLEVELAND APP/DEP CON 118.6 (187°-006°) 125.5 (007°-186°) (1100-0500Z±)

Ⓡ CLEVELAND CENTER APP/DEP CON 134.9 (0500-1100Z±) ctc Cleveland ARTCC at 440-774-0223.

TOWER 134.75 GND CON 121.7 CLNC DEL 132.05

ARNG OPS 40.1 138.55 226.9

CLEARANCE DELIVERY PHONE: For CD ctc Cleveland ARTCC at 440-774-0223.

AIRSPACE: CLASS C svc ctc APP CON svc 1100-0500Z±; other times CLASS D.

VOR TEST FACILITY (VOT) 110.6

RADIO AIDS TO NAVIGATION: NOTAM FILE CAK.

(L) VOR/DME 114.4 ACO Chan 91 N41°06.47' W81°12.09' 228° 16.0 NM to fld. 1197/4W.

DME unusable:

Byd 10 NM

ILS 109.5 I-CAK Rwy 01. Class IA.

ILS/DME 108.3 I-EQX Chan 20 Rwy 05. Class IE.

ILS 109.5 I-RGO Rwy 19. Class IE.

ILS/DME 108.3 I-GGZ Chan 20 Rwy 23. Class IE. DME unusable byd 3° r of course.

ASR

MAYFIELD (1D4) 5 SE UTC-5(-4DT) N40°59.55' W81°25.91'

DETROIT

1100 NOTAM FILE CLE

RWY 09-27: 2315X110 (TURF) 0.3% up E

RWY 09: Thld dspcd 180'. Trees.

RWY 27: Thld dspcd 590'. Trees. Rgt tfc.

AIRPORT REMARKS: Attended irregularly. Deer, birds, and wildlife on and in/ovf airport. Rwy 09-27 rolling trnm, Rwy 27 upslope W end 12' higher than E end. Open to the public, wx and conds pmng, ldg fees. No prkg, fees may apply. No UAS, or similar acft pmtd. No unauthorized vehicles, no trespassing. Rwy 09-27 mkd with tires at rwy end and dthr only.

AIRPORT MANAGER: 330-699-3066

COMMUNICATIONS: CTAF 122.9

CLEARANCE DELIVERY PHONE: For CD ctc Cleveland Apch at 216-352-2323, when Apch clsd ctc Cleveland ARTCC at 440-774-0223.

ALDERMAN (See ST CLAIRSVILLE on page 299)

ALEXANDER SALAMON (See WEST UNION on page 312)