

**PINCKNEYVILLE—DU QUOIN** (PJV)(KPJV) 6 SE UTC-6(-5DT) N37°58.67' W89°21.63'

**ST LOUIS**  
L-16H  
IAP

400 B TPA—See Remarks NOTAM FILE STL

**RWY 18-36:** H3999X60 (ASPH) S-12.5, D-15.8 MIRL

**RWY 18:** REIL. PAPI(P2L)—GA 3.0° TCH 44'.

**RWY 36:** REIL. PAPI(P2L)—GA 3.0° TCH 44'. Road.

**SERVICE:** **FUEL** 100LL **LGT** Actvt REIL Rwy 18 & 36; PAPI Rwy 18 & 36—CTAF. MIRL Rwy 18-36 preset to low instst, to incr instst & actvt—CTAF. Rwy 18 PAPI unusbl byd 1 NM.

**AIRPORT REMARKS:** Attended irregularly. Wildlife on and invof arpt. Ultralight ops on and invof arpt. Fuel is self svc with credit card. For emergency call police department 618-357-8231 or 911. For service call acft maintenance, 618-443-2002. TPA—800 (400) ultralights, 1200 (800) all other acft. Ultralight tkf and ldg ops on grass on west side of rwy.

**AIRPORT MANAGER:** 618-542-8596

**COMMUNICATIONS:** CTAF/UNICOM 122.8

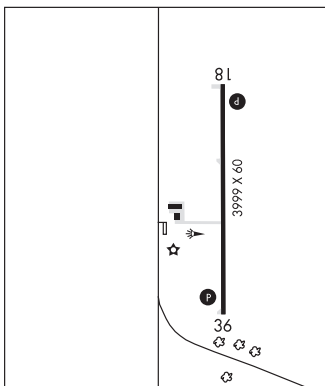
Ⓡ **KANSAS CITY CENTER APP/DEP CON** 127.475

**CLEARANCE DELIVERY PHONE:** For CD ctc Kansas City ARTCC at 913-254-8508.

**RADIO AIDS TO NAVIGATION:** NOTAM FILE ENL.

**CENTRALIA (H) VORTAC** 115.0 ENL Chan 97 N38°25.20' W89°09.54' 196° 28.2 NM to fld. 546/4E.

VOR portion unusable:  
100°-134° blo 3,000'  
135°-140° blo 2,700'



**PITTSFIELD PENSTONE MUNI** (PPQ)(KPPQ) 3 NE UTC-6(-5DT) N39°38.33' W90°46.71'

**ST LOUIS**  
L-27B  
IAP

710 B NOTAM FILE PPQ

**RWY 13-31:** H4000X60 (ASPH) S-12 MIRL 0.4% up NW

**RWY 13:** PAPI(P2L)—GA 3.0° TCH 32'.

**RWY 31:** PAPI(P2L)—GA 3.0° TCH 29'.

**SERVICE:** **FUEL** 100LL, JET A **LGT** MIRL Rwy 13-31 preset on low ints; to increase ints and ACTIVATE MIRL Rwy 13-31—CTAF. PAPI Rwy 13 and Rwy 31 opr continuously. Twy lgts are lighted exit arrows.

**AIRPORT REMARKS:** Attended Mon-Fri 1400-2300Z±. Deer and migratory waterfowl on and invof arpt. Fuel 24 hr. self svc credit card (major) fuel facility. Rwy 13 markings poor due to fading. Rwy 31 markings poor due to fading.

**AIRPORT MANAGER:** 217-285-6027

**WEATHER DATA SOURCES:** AWOS-3 118.525 (217) 285-1428.

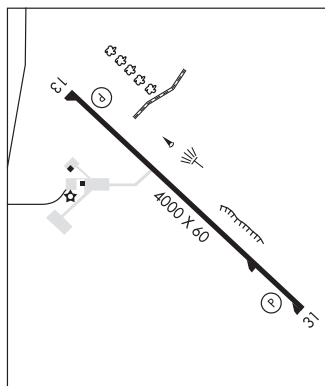
**COMMUNICATIONS:** CTAF/UNICOM 122.8

**KANSAS CITY CENTER APP/DEP CON** 126.225

**CLEARANCE DELIVERY PHONE:** For CD ctc Kansas City ARTCC at 913-254-8508.

**RADIO AIDS TO NAVIGATION:** NOTAM FILE UNL.

**QUINCY (H) VORTACW** 113.6 UIN Chan 83 N39°50.87' W91°16.74' 113° 26.3 NM to fld. 715/5E.



**POLO** N41°57.94' W89°31.45' NOTAM FILE IKK.

**CHICAGO**  
L-28H

(L) **VOR/DME** 111.2 PLL Chan 49 153° 8.7 NM to Dixon Muni-Charles R Walgreen Fld. 840/3E.