

BARRE/BARRE PLAINS

TANNER-HILLER (8B5) 4 SW UTC-5(-4DT) N42°21.38' W72°07.81'

NEW YORK
L-33C, 34J

- 589 NOTAM FILE BDR
- RWY 06-24:** H3027X40 (ASPH) S-9
- RWY 06:** Thld dspclcd 150'. Trees.
- RWY 24:** Thld dspclcd 200'. Trees.

SERVICE: S2

AIRPORT REMARKS: Unattended. Arpt CLOSED except PPR-ref NOTAMS. Wildlife on and invof arpt. Fuel not avbl. Gliders opr from arpt on intermittent basis. Gliders and powered acft: follow left hand tfc pat on both rwys. Rwy 24 has grvl ovrn, Rwy 06 has turf ovrn.

AIRPORT MANAGER: (609) 923-3228

COMMUNICATIONS: CTAF/UNICOM 123.0

CLEARANCE DELIVERY PHONE: For CD ctc Yankee Apch at 860-386-3597

RADIO AIDS TO NAVIGATION: NOTAM FILE BDR.

GARDNER (L) VOR/DME 110.6 GDM Chan 43 N42°32.76' W72°03.49' 210° 11.8 NM to fld. 1280/14W.

BEDFORD

LAURENCE G HANSCOM FLD (BED)(KBED) P (AF) 0 NE UTC-5(-4DT) N42°28.20'

NEW YORK
COPTER

W71°17.34'

132 B TPA—See Remarks LRA Class I, ARFF Index B NOTAM FILE BED

H-11D, 12K, L-33D, 34J
IAP, AD

RWY 11-29: H7011X150 (ASPH-GRVD) S-120, D-250, 2S-127, 2D-455 PCN 82 F/C/W/T HIRL

RWY 11: MALSR. PAPI(P4L)—GA 3.0° TCH 67'. RVR-T Hill.

RWY 29: MALSR. PAPI(P4R)—GA 3.0° TCH 52'. RVR-R

RWY 05-23: H5107X150 (ASPH-GRVD) S-120, D-250, 2S-149, 2D-436 PCN 79 F/C/W/T MIRL

RWY 05: REIL. VASI(V4L)—GA 3.75° TCH 62'.

RWY 23: REIL. VASI(V4R)—GA 3.5° TCH 56'.

LAND AND HOLD-SHORT OPERATIONS

LDG RWY	HOLD-SHORT POINT	AVBL LDG DIST
RWY 05	11-29	3000
RWY 11	05-23	2650
RWY 29	05-23	3662

RUNWAY DECLARED DISTANCE INFORMATION

RWY 05: TORA-5107 TODA-5107 ASDA-5107 LDA-5107
RWY 11: TORA-7011 TODA-7011 ASDA-7011 LDA-7011
RWY 23: TORA-5107 TODA-5107 ASDA-5107 LDA-5107
RWY 29: TORA-7011 TODA-7011 ASDA-7011 LDA-7011

SERVICE: S4 FUEL 100LL, JET A OX 1, 2, 3, 4 LGT Actvt MALSR Rwy

11 and 29; REIL Rwy 05 and 23; HIRL Rwy 11-29; MIRL Rwy 05-23;

twy lgts-118.5. Rwy 05 VGSi OTS UFN. **MILITARY—JASU** 3(A/M32A-86) 2(MA-1A) FUEL 100LL, A **TRAN ALERT** Opr 1200-0400Z± wkcd; 1400-2200Z± Sun; PPR OT and hol DSN 845-5589/5592. De-icing avbl fr vendor. Ltd hgr space and extremely ltd maint. Fleet svc avbl fr vendor.

NOISE: Noise rules in effect, helicopters opr within controlled airspace are rqr'd to maintain highest possible alt. Voluntary noise abatement procedures in effect ctc arpt mgr 781-869-8000. Noise sensitive historic area S of arpt; for Rwy 23 dep cont rwy hdg to 1000 ft AGL, turning crosswind ovr Rte 2.

AIRPORT REMARKS: Attended continuously. Birds and wildlife on and invof arpt. PPR for all acft carrying explosives, call 781-869-8000. PPR for maint eng run-ctc AMGR. No plas/tgls for acft under 12,500 lbs and over. No plas/tgls for acft under 12,500 lbs 0400-1200Z±. Be alert for small acft parked on ramps. Rwy 29 right tfc acft over 12,500 lbs.

TPA-1132(1000) fixed wing, 1632(1500) turbojet, 1932(1800) heavy jet acft. Clsd to Part 121 acr ops with over 60 seats excp 24 hr PPR call 781-869-8000. Twy C, F, J, R, S, T, Twy M south of Twy E and Twy G btn Rwy 11-29 and Rwy 05-23 clsd to acft grt than 118 ft wingspan. Twy N clsd permly. Surcharge for each ldg and dep 0400-1200Z±. Coml and tsnt ldg fee. Flight Notification Service (ADCUS) avbl.

AIRPORT MANAGER: 781-869-8000

WEATHER DATA SOURCES: ASOS 124.6 (781) 274-9733. LAWRS.

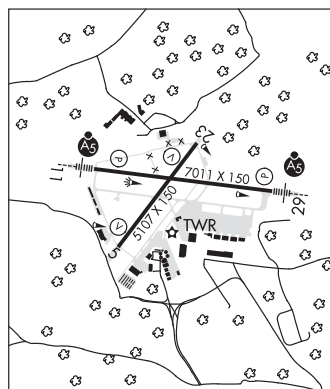
COMMUNICATIONS: CTAF 118.5 ATIS 124.6 (781) 274-6283 UNICOM 122.95

Ⓡ BOSTON APP/DEP CON 124.4

HANSCOM TOWER 118.5 (1200-0400Z±) GND CON 121.7 CLNC DEL 121.85

AIRSPACE: CLASS D svc 1200-0400Z±; other times CLASS G.

VOR TEST FACILITY (VOT) 110.0



CONTINUED ON NEXT PAGE

MASSACHUSETTS

CONTINUED FROM PRECEDING PAGE

RADIO AIDS TO NAVIGATION: NOTAM FILE BOS.

BOSTON (H) VOR/DME 112.7 BOS Chan 74 N42°21.45' W70°59.37' 313° 14.9 NM to fld. 18/16W.

VOR unusable:

061°-104° byd 18 NM blo 2,000'

061°-104° byd 18 NM blo 2,000'

271°-060° byd 25 NM blo 2,000'

271°-060° byd 25 NM blo 3,500'

LAWRENCE (L) DME 112.5 LWM Chan 72 N42°44.43' W71°05.69' 208° 18.4 NM to fld. 306/0W. NOTAM FILE LWM.

DME unusable:

160°-195° byd 23 NM blo 2,500'

ILS/DME 111.15 I-BED Chan 48(Y) Rwy 11. Class IA. Unmonitored when ATCT clsd.

ILS/DME 111.15 I-ULJ Chan 48(Y) Rwy 29. Class IA. Unmonitored when ATCT clsd.

BERKLEY

MYRICKS (1M8) 3 SE UTC-5(-4DT) N41°50.34' W71°01.59'

NEW YORK

73 NOTAM FILE BDR

RWY 09-27: 2466X50 (TURF) 0.3% up NE

RWY 09: Tree.

RWY 27: Trees.

SERVICE: S2 FUEL 100LL

AIRPORT REMARKS: Attended dalgt hrs. Wildlife on and invof arpt. Aerial banner pickup and drop ops on and invof arpt.

AIRPORT MANAGER: 508-822-2457

COMMUNICATIONS: CTAF 122.9

CLEARANCE DELIVERY PHONE: For CD ctc Providence Apch at 401-738-8945, when Apch clsd ctc Boston ARTCC at 603-879-6859.

BEVERLY RGNL (BVY)(KBVY) 3 NW UTC-5(-4DT) N42°35.05' W70°54.97'

NEW YORK

107 B LRA NOTAM FILE BVY

COPTER

RWY 16-34: H5001X100 (ASPH-GRVD) S-30, D-55, 2D-103 MIRL

H-11D, 12K, L-33D

0.5% up NW

IAP, AD

RWY 16: MALS. PAPI(P4L)—GA 3.5° TCH 41'. Thld dspcd 239'.

Trees.

RWY 34: REIL.

RWY 09-27: H4755X100 (ASPH-GRVD) S-30, D-114, 2S-145,

2D-180 MIRL 0.4% up E

RWY 09: PAPI(P4L)—GA 3.0° TCH 43'. Tree.

RWY 27: PAPI(P4L)—GA 3.22° TCH 46'. Thld dspcd 250'. Trees.

LAND AND HOLD-SHORT OPERATIONS

LDG RWY	HOLD-SHORT POINT	AVBL LDG DIST
RWY 09	16-34	3450
RWY 16	09-27	4000

SERVICE: S4 FUEL 100LL, JET A QX 3, 4 LGT Rwy 16 nstd

MALS-800 ft. When twr clsd ACTVT MALS Rwy 16; REIL Rwy 34;

PAPI Rwy 16, 09 and 27; MIRL Rwy 09-27 and Rwy 16-34—CTAF.

NOISE: Noise sensitive arpt. Voluntary compliance req of all acft exceeding

75 db to not land/depart arpt 0400-1200Z±. Noise abatement

procedures in effect ctc arpt manager 978-921-6072. All

arrival/departure acft follow manufacturers recommended procedures

for quiet ops and minimum noise. Noise sensitive area off the departure

end of Rwy 27 to the west, southwest, and south and off the departure end of Rwy 34 to the northwest.

AIRPORT REMARKS: Attended 1330-2130Z±. Birds frequently on or invof arpt, occasional deer or coyote on rwy. Fld conditions

not monitored 0200-1200Z± 15 May-31 Oct, 0100-1200Z± 01 Nov-14 May. Fuel svc 1030-2330Z±, after hrs req

only call 978-774-2070. Fuel, parking ctc FBO 129.725 or 978-774-2070. No ultralight or banner towing allowed.

Rwy 09-27 and Rwy 16-34 due to hump at midpoint, opposite ends of the rwy not visible at ground level. No tiedown

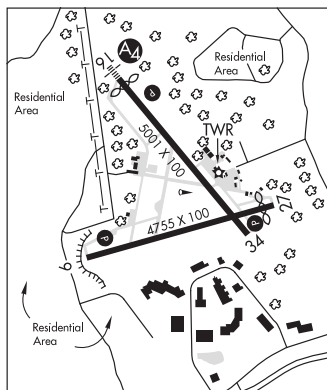
ropes on public tran parking. East ramp tran spaces, space numbers 15, 16, 17 only. Parking west side tran ramp at FBO.

Tran acft must use anti-theft device when acft unattended. Rwy 16 is the preferred calm wind rwy. Ldg fees for transient

acft. Overnight parking fee. Flight Notification Service (ADCUS) available.

AIRPORT MANAGER: 978-921-6072

WEATHER DATA SOURCES: ASOS 119.2 (978) 921-5042. LAWRS.



CONTINUED ON NEXT PAGE