

# MASSACHUSETTS

## CONTINUED FROM PRECEDING PAGE

**RADIO AIDS TO NAVIGATION:** NOTAM FILE BOS.

**BOSTON (H) VOR/DME** 112.7 BOS Chan 74 N42°21.45' W70°59.37' 313° 14.9 NM to fld. 18/16W.

VOR unusable:

061°-104° byd 18 NM blo 2,000'

061°-104° byd 18 NM blo 2,000'

271°-060° byd 25 NM blo 2,000'

271°-060° byd 25 NM blo 3,500'

**LAWRENCE (L) DME** 112.5 LWM Chan 72 N42°44.43' W71°05.69' 208° 18.4 NM to fld. 306/OW. NOTAM FILE LWM.

DME unusable:

160°-195° byd 23 NM blo 2,500'

**ILS/DME** 111.15 I-BED Chan 48(Y) Rwy 11. Class IA. Unmonitored when ATCT clsd.

**ILS/DME** 111.15 I-ULJ Chan 48(Y) Rwy 29. Class IA. Unmonitored when ATCT clsd.

**BERKLEY**

**MYRICKS** (1M8) 3 SE UTC-5(-4DT) N41°50.34' W71°01.59'

NEW YORK

73 NOTAM FILE BDR

**RWY 09-27:** 2466X50 (TURF) 0.3% up NE

**RWY 09:** Tree.

**RWY 27:** Trees.

**SERVICE:** S2 FUEL 100LL

**AIRPORT REMARKS:** Attended dalgt hrs. Wildlife on and infov arpt. Aerial banner pickup and drop ops on and infov arpt.

**AIRPORT MANAGER:** 508-822-2457

**COMMUNICATIONS:** CTAF 122.9

**CLEARANCE DELIVERY PHONE:** For CD ctc Providence Apch at 401-738-8945, when Apch clsd ctc Boston ARTCC at 603-879-6859.

**BEVERLY RGNL** (BVY)(KBVY) 3 NW UTC-5(-4DT) N42°35.05' W70°54.97'

NEW YORK

107 B LRA NOTAM FILE BVY

COTPER

**RWY 16-34:** H5001X100 (ASPH-GRVD) S-30, D-55, 2D-103 MIRL

H-11D, 12K, L-33D

0.5% up NW

IAP, AD

**RWY 16:** MALS. PAPI(P4L)—GA 3.5° TCH 41'. Thld dsplcd 239'.

Trees.

**RWY 34:** REIL.

**RWY 09-27:** H4755X100 (ASPH-GRVD) S-30, D-114, 2S-145,

2D-180 MIRL 0.4% up E

**RWY 09:** PAPI(P4L)—GA 3.0° TCH 43'. Tree.

**RWY 27:** PAPI(P4L)—GA 3.22° TCH 46'. Thld dsplcd 250'. Trees.

**LAND AND HOLD-SHORT OPERATIONS**

LDG RWY	HOLD-SHORT POINT	AVBL LDG DIST
<b>RWY 09</b>	16-34	3450
<b>RWY 16</b>	09-27	4000

**SERVICE:** S4 FUEL 100LL, JET A QX 3, 4 LGT Rwy 16 nstd

MALS-800 ft. When twr clsd ACTVT MALS Rwy 16; REIL Rwy 34;

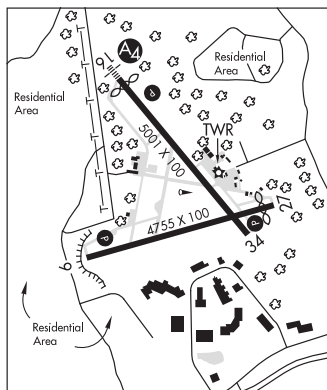
PAPI Rwy 16, 09 and 27; MIRL Rwy 09-27 and Rwy 16-34—CTAF.

**NOISE:** Noise sensitive arpt. Voluntary compliance req of all acft exceeding 75 db to not land/depart arpt 0400-1200Z±. Noise abatement procedures in effect ctc arpt manager 978-921-6072. All arrival/departure acft follow manufacturers recommended procedures for quiet ops and minimum noise. Noise sensitive area off the departure end of Rwy 27 to the west, southwest, and south and off the departure end of Rwy 34 to the northwest.

**AIRPORT REMARKS:** Attended 1330-2130Z±. Birds frequently on or infov arpt, occasional deer or coyote on rwy. Fld conditions not monitored 0200-1200Z± 15 May-31 Oct, 0100-1200Z± 01 Nov-14 May. Fuel svc 1030-2330Z±, after hrs req only call 978-774-2070. Fuel, parking ctc FBO 129.725 or 978-774-2070. No ultralight or banner towing allowed. Rwy 09-27 and Rwy 16-34 due to hump at midpoint, opposite ends of the rwy not visible at ground level. No tiedown ropes on public tran parking. East ramp tran spaces, space numbers 15, 16, 17 only. Parking west side tran ramp at FBO. Tran acft must use anti-theft device when acft unattended. Rwy 16 is the preferred calm wind rwy. Ldg fees for transient acft. Overnight parking fee. Flight Notification Service (ADCUS) available.

**AIRPORT MANAGER:** 978-921-6072

**WEATHER DATA SOURCES:** ASOS 119.2 (978) 921-5042. LAWRS.



CONTINUED ON NEXT PAGE

CONTINUED FROM PRECEDING PAGE

COMMUNICATIONS: CTAF 125.2 ATIS 119.2 UNICOM 122.95

® BOSTON APP/DEP CON 124.4

TOWER 125.2 (1200-0200Z± 15 May-31 Oct; 1200-0100Z± 01 Nov-14 May) GND CON 121.6

AIRSPACE: CLASS D svc 1200-0200Z± 15 May- 31 Oct, 1200-0100Z± 01 Nov- 14 May; other times CLASS G.

RADIO AIDS TO NAVIGATION: NOTAM FILE LWM.

LAWRENCE (L) DME 112.5 LWM Chan 72 N42°44.43' W71°05.69' 140° 12.3 NM to fld. 306/0.W.  
DME unusable:  
160°-195° byd 23 NM blo 2,500'

LOC/DME 110.5 I-BVY Chan 42 Rwy 16. LOC unusable byd 15° left of course. DME unusable byd 15° left of course.

COMM/NAV/WEATHER REMARKS: Emerg frequency 121.5 not available at twr. When twr not open close fit plan with Boston apch—121.6.

BOMBE N41°43.93' W70°26.48' NOTAM FILE FMH.

NDB (LOM) 362 FM 235° 5.7 NM to Cape Cod Coast Guard Air Station.

BOSTON

GENERAL EDWARD LAWRENCE LOGAN INTL (BOS)(KBOS) 1 E UTC-5(-4DT)

N42°21.78' W71°00.38'

19 B LRA Class I, ARFF Index E NOTAM FILE BOS

RWY 15R-33L: H10083X150 (ASPH-GRVD) S-120, D-250, 2S-175,

2D-550 PCN 90 F/C/W/T HIRL CL

RWY 15R: MALS. TDZL. PAPI(P4L)—GA 3.0° TCH 71'. RVR-TMR Thld dspcd 882'. Trees.

RWY 33L: ALSF2. TDZL. PAPI(P4R)—GA 3.0° TCH 68'. RVR-TMR Boat.

RWY 04R-22L: H10006X150 (ASPH-GRVD) S-120, D-250, 2S-175,

2D-550 PCN 90 F/C/W/T HIRL CL

RWY 04R: ALSF2. TDZL. PAPI(P4L)—GA 3.0° TCH 67'. RVR-TMR Thld dspcd 1155'. Boat.

RWY 22L: MALS. PAPI(P4R)—GA 3.0° TCH 71'. RVR-TMR Thld dspcd 1199'. Boat.

RWY 04L-22R: H7864X150 (ASPH-GRVD) S-120, D-250, 2S-175,

2D-550 PCN 90 F/C/W/T HIRL CL

RWY 04L: REIL. PAPI(P4L)—GA 3.0° TCH 50'. RVR-TR Boat.

RWY 22R: PAPI(P4L)—GA 3.0° TCH 50'. RVR-TR Thld dspcd 819'. Boat.

RWY 09-27: H7001X150 (ASPH-GRVD) S-120, D-250, 2S-175,

2D-550 PCN 90 F/C/W/T HIRL CL

RWY 09: RVR-TR Boat.

RWY 27: REIL. PAPI(P4L)—GA 3.0° TCH 71'. RVR-TR Boat.

RWY 14-32: H5000X100 (ASPH-GRVD) S-120, D-250, 2S-175, 2D-490 PCN 85 F/C/W/T HIRL

RWY 14: Bldg.

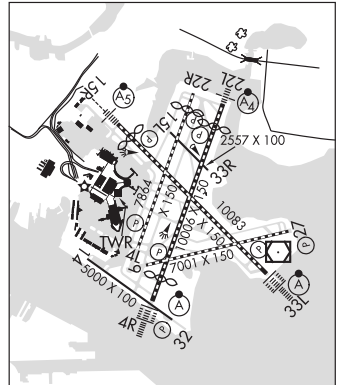
RWY 32: REIL. PAPI(P4L)—GA 3.0° TCH 45'.

RWY 15L-33R: H2557X100 (ASPH) S-120, D-250, 2S-175, 2D-550 PCN 90 F/C/W/T MIRL

LAND AND HOLD—SHORT OPERATIONS

LDG RWY	HOLD—SHORT POINT	AVBL LDG DIST
RWY 04L	15L-33R	5250
RWY 15R	09-27	6800
RWY 22L	09-27	6400
RWY 27	04R-22L	5650

NEW YORK  
COPTER  
H-10J, 11D, 12K, L-33D, 34J  
IAP, AD



CONTINUED ON NEXT PAGE