

**NEWARK LIBERTY INTL** (EWR)(KEWR) 3 S UTC-5(-4DT) N40°41.55' W74°10.12'

**NEW YORK**

17 B LRA Class I, ARFF Index E NOTAM FILE EWR

**COPTER**

**RWY 04L-22R:** H11000X150 (ASPH-CONC-GRVD) D-210, 2D-520, 2D/2D2-1000 PCN 96 R/B/X/T HIRL CL

H-101, 121, L-33A, 34H

**RWY 04L:** MALSR. TDZL. PAPI(P4L)—GA 3.1° TCH 77'. RVR-TMR Thld dsplcd 2540'. Tree.

IAP, AD

**RWY 22R:** MALSR. TDZL. REIL. PAPI(P4L)—GA 3.1° TCH 70'. RVR-TMR Thld dsplcd 1440'. Pole.

**RWY 04R-22L:** H11000X150 (ASPH-GRVD) D-210, 2D-520, 2D/2D2-1000 PCN 96 R/B/W/T HIRL CL

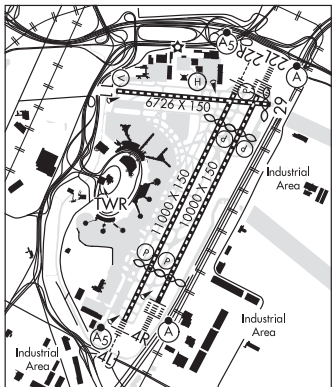
**RWY 04R:** ALSF2. TDZL. PAPI(P4L)—GA 2.95° TCH 71'. RVR-TMR Thld dsplcd 1190'. Pole.

**RWY 22L:** ALSF2. TDZL. PAPI(P4L)—GA 3.0° TCH 60'. RVR-TMR Thld dsplcd 1793'. Antenna.

**RWY 11-29:** H6726X150 (ASPH-GRVD) D-210, 2D-520, 2D/2D2-1000 PCN 96 R/B/W/T HIRL CL

**RWY 11:** TDZL. REIL. VASI(V4L)—GA 3.08° TCH 58'. RVR-TMR Bldg.

**RWY 29:** TDZL. REIL. PAPI(P4R)—GA 3.0° TCH 60'. Thld dsplcd 224'. Sign.



**LAND AND HOLD-SHORT OPERATIONS**

LDG RWY	HOLD-SHORT POINT	AVBL LDG DIST
RWY 04L	11-29	7750
RWY 04R	11-29	8100
RWY 11	04R-22L	5700

**RUNWAY DECLARED DISTANCE INFORMATION**

<b>RWY 04L:</b> TORA-11000 TODA-11000 ASDA-11000 LDA-8460
<b>RWY 04R:</b> TORA-10000 TODA-10000 ASDA-10000 LDA-8810
<b>RWY 11:</b> TORA-6726 TODA-6726 ASDA-6726 LDA-6726
<b>RWY 22L:</b> TORA-10000 TODA-10000 ASDA-10000 LDA-8207
<b>RWY 22R:</b> TORA-11000 TODA-11000 ASDA-11000 LDA-9560
<b>RWY 29:</b> TORA-6726 TODA-6726 ASDA-6726 LDA-6502

**ARRESTING GEAR/SYSTEM**

**RWY 11:** EMAS  
**RWY 29:** EMAS

**SERVICE:** S4 FUEL 100LL, JET A OX3 LGT Rwy status lgts in opr. Rwy 29 PAPI unusable 5° left of centerline.

**NOISE:** Noise restrictions call 212-435-3784 during normal business hrs.

**AIRPORT REMARKS:** Special Air Traffic Rules-Part 93. Attended continuously. Flocks of birds on and in/ov airport. Para-sail and banner towing ops 1000' and blo in upper and lower New York bays including Rockaway Inlet indef. High volume of low level helicopter t/c arriving and departing Helo Kearny Heliport (65NJ) located 3.5 miles northeast of the arpt. Expect to leave and re-enter the Class B Airspace during moderate to heavy arrival periods. Rwy 04L-22R, south 1779' conc, north 1228' conc, center 7993' asph. ASDE-X in use. Operate transponders with altitude reporting mode and ADS-B (if equipped) enabled on all airport surfaces. Rwy 04R and Rwy 04L departures use upper antenna for ATC communications. Twy Z between Twy Z2 and Twy Z4 clsd to acft with wingspans in excess of 171'. ADG IV acft restriction from passing Twy Z3 on Twy Z. Twy Z east of Twy U acft speed restriction of 17kts/20mph max for all acft with wingspans in excess of 171'. All twys surrounding "ballpark" parking area (Twy Y btn Twy S and Twy U, Twy S btn Twy Y and Twy K, Twy K btn Twy S and Twy B, Twy B btn Twy K and Twy U and Twy U btn Twy B and Twy Y) acft speed restriction of 17kts/20mph for all acft with wingspans in excess of 171'. Twy EE btn Rwy 04R-22L and Rwy 11-29 clsd to acft with wingspans in excess of 171'. Twy Y btn RM and Twy U, speed restriction of 17 kts (20 mph). Twy A btn Twy AA and ramp clsd to acft with wingspans in excess of 171 ft. Twy Z5 clsd to acft with wingspans in excess of 118'. Twy A11 W of Twy A acft spd rstr of 17 kts/20 mph max for all acft with wingspans in excess of 171'. Ldg fee. Flight Notification Service (ADCUS) avbl.

**AIRPORT MANAGER:** 973-961-6161

**WEATHER DATA SOURCES:** ASOS (973) 621-2892 LLWAS. TDWR.

**COMMUNICATIONS:** D-ATIS ARR 115.7 D-ATIS SOUTH ARR 134.825 (973) 824-4417. UNICOM 122.95

Ⓜ NEW YORK APP/DEP CON 132.8 (241°-269°) 128.55 (090°-240°) 127.6 (270°-330°) 132.7 (331°-089°)

Ⓜ NEW YORK APP/DEP CON 119.2

TOWER 118.3 134.05 GND CON 121.8 126.15 CLNC DEL 118.85

PRE TAXI CLNC 118.85 RAMP CTL 132.45

CPDLC DCL (LOGON KUSA)

PDC

**CONTINUED ON NEXT PAGE**

CONTINUED FROM PRECEDING PAGE

AIRSPACE: CLASS B See VFR Terminal Area Chart.

RADIO AIDS TO NAVIGATION: NOTAM FILE TEB.

**TEEBORBO (T) VORW/DME** 108.4 TEB Chan 21 N40°50.92' W74°03.73' 218° 10.6 NM to fld. 3/11W.

DME unusable:

- 060°-080° byd 22 NM blo 2,500'
- 081°-120° blo 4,000'
- 121°-180° blo 3,000'
- 236°-246°

VOR unusable:

- 081°-120° blo 4,000'
- 121°-180° blo 3,000'
- 236°-246°

**ILS/DME** 110.75 I-EWR Chan 44(Y) Rwy 04L. Class IID. DME shared with ILS Rwy 22R.

**ILS/DME** 108.7 I-EZA Chan 24 Rwy 04R. Class IIIE. DME serves Rwy 04L and Rwy 22L. DME unusable byd 15 NM.

**ILS/DME** 109.15 I-GPR Chan 28(Y) Rwy 11. Glideslope unusable byd 5° right and left side of course and .7 NM (300' MSL) inbound. LOC unusable byd 25° left of course.

**ILS/DME** 108.7 I-LSQ Chan 24 Rwy 22L. Class IIIE. LOC unusable byd 20° left of course.

**ILS/DME** 110.75 I-JNN Chan 44(Y) Rwy 22R. Class IT. AYRON OM is also used for Rwy 22L. DME shared with ILS Rwy 04L. Localizer unusable byd 20° left of course.



**HELIPAD H1:** H54X54 (ASPH) PERIMETER LGTS

**HELIPORT REMARKS:** Helipad H1 perimeter lgts. Brewster pad; H1 located on Twy Z5. Ops limits are D65.

**OCEAN CITY MUNI** (26N) 2 SW UTC-5(-4DT) N39°15.81' W74°36.45'  
6 NOTAM FILE MIV

**WASHINGTON**  
L-34G  
IAP

**RWY 06-24:** H2972X60 (ASPH) S-12.5 MIRL

**RWY 06:** PAPI(P2R)—GA 3.5° TCH 36'.

**RWY 24:** PAPI(P2L)—GA 3.5° TCH 37'. Tree. Rgt tfc.

**SERVICE:** FUEL 100LL LGT ACTIVATE MIRL Rwy 06-24—CTAF.

**AIRPORT REMARKS:** Attended Jun-Sep 1300-0100Z†, winter 1300-2100Z†.

Birds on and invof arpt.

**AIRPORT MANAGER:** (609) 525-9222

**WEATHER DATA SOURCES:** AWOS-AV 119.775 (609) 398-0705.

**COMMUNICATIONS:** CTAF/UNICOM 122.7

Ⓡ ATLANTIC CITY APP/DEP CON 124.6

CLNC DEL 133.6

**CLEARANCE DELIVERY PHONE:** For CD ctc Washington ARTCC at 703-771-3587.

**RADIO AIDS TO NAVIGATION:** NOTAM FILE ACY.

**ATLANTIC CITY (L) VORTACW** 117.15 ACY Chan 118(Y) N39°27.35' W74°34.58' 197° 11.6 NM to fld. 67/10W.

VORTAC unusable:

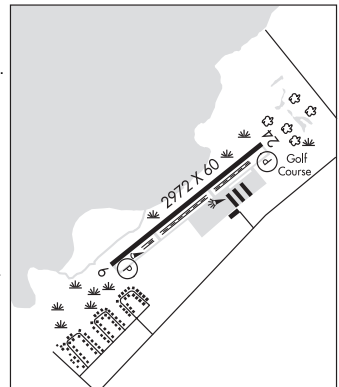
290°-300° byd 10 NM blo 4,000'

VOR portion unusable:

301°-355° byd 35 NM blo 2,000'

**CEDAR LAKE (L) VORW/DME** 115.2 VCN Chan 99 N39°32.26'

W74°58.03' 144° 23.5 NM to fld. 120/10W. NOTAM FILE MIV.



**OCEAN CO** (See TOMS RIVER on page 176)