

CONTINUED FROM PRECEDING PAGE

RADIO AIDS TO NAVIGATION: NOTAM FILE HTO.

HAMPTON (H) VORTACW 113.6 HTO Chan 83 N40°55.14' W72°19.00' 075° 20.3 NM to fld. 22/13W.

DME unusable:

280°-325° byd 35 NM blo 1,700'

326°-355° byd 30 NM blo 2,000'

TACAN AZIMUTH unusable:

280°-325° byd 35 NM blo 1,700'

326°-355° byd 30 NM blo 2,000'

VOR unusable:

010°-240°

270°-332°

MONTGOMERY

ORANGE CO (MGJ)(KMGJ) 1 SW UTC-5(-4DT) N41°30.71' W74°15.81'

370 B TPA—See Remarks NOTAM FILE MGJ

RWY 04-22: H5006X100 (ASPH-GRVD) S-30, D-57, 2D-85 HIRL

RWY 04: REIL. PAPI(P4L)—GA 3.0° TCH 52'. Trees.

RWY 22: REIL. PAPI(P2L)—GA 3.0° TCH 45'. Rgt tfc.

RWY 08-26: H3664X100 (ASPH) S-30, D-57, 2D-85 MIRL

0.3% up E

RWY 08: PAPI(P2L)—GA 3.5° TCH 49'. Trees.

RWY 26: PAPI(P2L)—GA 3.5° TCH 43'. Thld displcd 315'. Fence. Rgt tfc.

SERVICE: S4 FUEL 100LL, JET A OX 1, 2, 3, 4 LGT ACTVT HIRL Rwy 04-22; MIRL Rwy 08-26; twy lgts—CTAF. REIL Rwy 04 and 22; PAPI Rwys 04 and 22; 08 and 26 opr consly. PCL only avbl SS-SR.

NOISE: Noise abatement procedures in effect, ctc arpt mgr 845-457-4925.

AIRPORT REMARKS: Attended Sun 1330-2130Z†, Nov-Apr Mon-Sat 1200-2200Z†, May-Oct Mon-Sat 1200-0000Z†. Deer and birds on and infov arpt. Rwy 04 designated calm wind rwy. Wind indicator on Rwys 04, 22, 26. Be aware of large turbojet acft infov Stewart arpt lctd 7 NM east-southeast. 800' hill 1/2 mile northwest of arpt on downwind/base leg for Rwy 22. TPA—1764(1400) single engine, 2064(1700) multi-engine/turboprop/jet. 9' stabilized shoulder each side of Rwy 08-26.

AIRPORT MANAGER: 845-457-4925

WEATHER DATA SOURCES: ASOS 119.275 (845) 457-1486.

COMMUNICATIONS: CTAF/AUNICOM 122.725

Ⓡ NEW YORK APP/DEP CON 132.75

MONTGOMERY CLNC DEL 123.85

CLEARANCE DELIVERY PHONE: For CD ctc New York Apch at 516-683-2448 or 123.85

RADIO AIDS TO NAVIGATION: NOTAM FILE ISP.

HUGUENOT (H) VOR/DME 116.1 HVO Chan 108 N41°24.58' W74°35.50' 078° 16.0 NM to fld. 1300/11W.

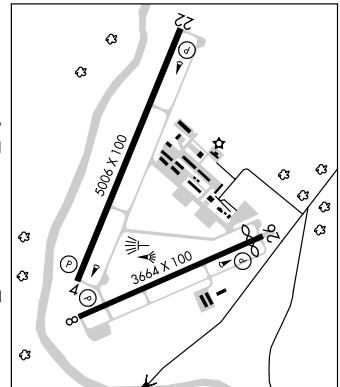
VOR unusable:

029°-045° byd 15 NM blo 5,000'

050°-060° byd 10 NM

210°-230° byd 20 NM blo 6,500'

ILS 111.7 I-MGJ Rwy 04. Class IT.



NEW YORK
H-101, 121, L-33B, 34H
IAF