

STATE COLLEGE

UNIVERSITY PARK (UNV)(KUNV) 3 N UTC-5(-4DT) N40°51.00' W77°50.86'

1231 B TPA—See Remarks Class I, ARFF Index B NOTAM FILE UNV

RWY 06-24: H6701X150 (ASPH-GRVD) S-50, D-110 PCN 44 F/B/X/U

HIRL 0.6% up SW

RWY 06: REIL PAPI(P4L)—GA 3.0° TCH 45'. Rgt tfc.

RWY 24: MALSR PAPI(P4R)—GA 3.0° TCH 55'. Trees.

RUNWAY DECLARED DISTANCE INFORMATION

RWY 06: TORA-6701 TODA-6701 ASDA-6701 LDA-6701

RWY 24: TORA-6701 TODA-6701 ASDA-6701 LDA-6701

SERVICE: S3 FUEL 100LL, JET A OX 4 LGT When twr clsd ACTIVATE MALSR Rwy 24, REIL Rwy 06, HIRL Rwy 06-24 and twy lgts—CTAF.

AIRPORT REMARKS: Attended continuously. Student training 2.5 NM NE at Bellefonte Arpt. Glider activity during dalgt hrs. All alt within 10 NM all directions, spcly along ridge 2 NM west and north of arpt. Acft on either end Rwy 06-24 cannot be seen on other end due to rwy grade. Rwy 06-24 grvd portion of rwy center 80'. PPR 24 hrs for unsked ACR ops with more than 9 pax seats btn 0400-0900Z† call AMGR. TPA 2192(961) single engine acft, 2692(1461) multi engine acft. Deicing equipment avbl on apron adjacent to Twy B between Twys C and B1. Twy J NW of Twy A rstd to acft less than 12,500 pounds. Ldg fee for single engine, multi engine acft and helicopters. 35' AGL lgt poles on the north edge of de-ice apron.

AIRPORT MANAGER: 814-865-4042

WEATHER DATA SOURCES: AWOS-3 127.65 (814) 865-8799. SAWRS.

COMMUNICATIONS: CTAF 128.475 D-ATIS 127.65 UNICOM 122.95

NEW YORK CENTER APP/DEP CON 134.8 (when twr clsd)

TOWER 128.475 (1100-0300Z†) **GND CON** 119.625 **CLNC DEL** 119.625 118.55 (when twr clsd)

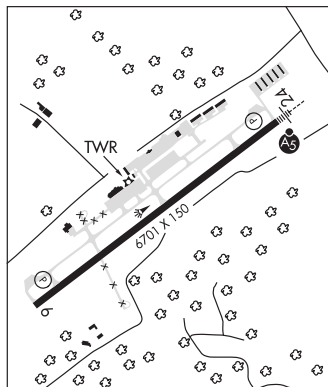
AIRSPACE: CLASS D svc 1100-0300Z†; other times CLASS E.

RADIO AIDS TO NAVIGATION: NOTAM FILE AOO.

PHILIPSBURG (H) VORTAC 115.5 PSB Chan 102 N40°54.98' W77°59.56' 131° 7.7 NM to fld. 2443/10W.

PENUE NDB (LOM) 388 UN N40°54.62' W77°44.50' 244° 6.0 NM to fld.

ILS 111.7 I-UNV Rwy 24. Class IA. LOM PENUE NDB.



DETROIT

H-10H, 12J, L-30I

IAP, AD

STERLING

SPRING HILL (70N) 1 NW UTC-5(-4DT) N41°20.84' W75°24.95'

1729 B NOTAM FILE IPT

RWY 05-23: H2478X42 (ASPH) S-10 LIRL 2.4% up SW

RWY 05: Thld dspcd 400'. Hill.

SERVICE: FUEL 100LL LGT ACTIVATE LIRL Rwy 05-23 and rotating bcn—CTAF.

AIRPORT REMARKS: Attended Mon-Fri 1300-2200Z†. For svc after hrs call 570-242-5771. Rwy 05 clsd ldg SS-SR. Deer on and invof arpt. Winter months call for rwy conditions.

AIRPORT MANAGER: 570-689-9316

COMMUNICATIONS: CTAF 122.9

Ⓡ **WILKES-BARRE APP/DEP CON** 126.3

CLEARANCE DELIVERY PHONE: For CD etc Wilkes-Barre Apch at 570-655-2084.

RADIO AIDS TO NAVIGATION: NOTAM FILE AVP.

WILKES-BARRE (L) VORTACW 111.6 LVZ Chan 53 N41°16.37' W75°41.37' 080° 13.2 NM to fld. 2118/10W.

VOR unusable:

290°-305° byd 15 NM blo 6,000'

NEW YORK

L-30K, 33A, 34H

IAP