

CHARLOTTESVILLE-ALBEMARLE (CHO)(KCHO) 7 N UTC-5(-4DT) N38°08.38' W78°27.14'

WASHINGTON
H-10H, 12I, L-26J, 36H
IAP, AD

640 B Class I, ARFF Index B NOTAM FILE CHO MON Airport
RWY 03-21: H6801X150 (ASPH-GRVD) S-120, D-228, 2S-175,
2D-368 PCN 65 F/C/X/T HIRL 0.3% up SW
RWY 03: MALSRL PAPI(P4L)—GA 3.0° TCH 53' .
RWY 21: REIL PAPI(P4R)—GA 3.0° TCH 50' .

RUNWAY DECLARED DISTANCE INFORMATION

RWY 03: TORA-6801 TODA-6801 ASDA-6801 LDA-6801
RWY 21: TORA-6801 TODA-6801 ASDA-6801 LDA-6801
SERVICE: S4 FUEL 100LL, JET A LGT Rwy 21 VGSIL unusbl byd 6,5 deg
L of RCL. When ATCT clsd HIRL Rwy 03-21, and twy lights preset low
intst. To ACTVT and increase intst MALSRL Rwy 03; REIL Rwy 21; HIRL
Rwy 03-21 and twy lights—CTAF.

AIRPORT REMARKS: Attended 0930-0530Z†. Deer and birds on and infov
arpt. PPR 8 hrs for unscheduled air carrier ops with more than 9
passenger seats between 0400-1100Z†, call arpt manager
434-981-4152. Wheeled helicopters are requested to ground taxi
when transiting arpt. Twy J uncontrolled, not visible from twr. Ldg fee
only for acft over 7000 lbs.

AIRPORT MANAGER: 434-973-8342

WEATHER DATA SOURCES: ASOS (434) 973-5024

COMMUNICATIONS: CTAF 124.5 ATIS 118.425 UNICOM 122.95

Ⓡ POTOMAC APP/DEP CON 132.85

APP/DEP CON 120.525

TOWER 124.5 (1100-0400Z†) GND CON 121.9

CLEARANCE DELIVERY PHONE: For CD when ATCT is clsd ctc Potomac Apch at 866-640-4124.

AIRSPACE: CLASS D svc 1100-0400Z†; other times CLASS E.

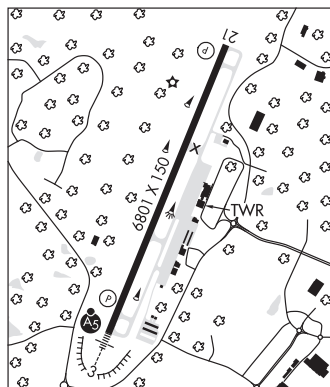
RADIO AIDS TO NAVIGATION: NOTAM FILE DCA.

GORDONSVILLE (H) VORTAC 115.6 GVE Chan 103 N38°00.82' W78°09.18' 304° 16.1 NM to fld. 383/6W.

TACAN AZIMUTH unusable:

250°-260° byd 25 NM blo 7,000'

ILS/DME 111.7 I-CHO Chan 54 Rwy 03. Class IA. ILS unmonitored when ATCT closed.



CHASE CITY MUNI (CXE)(KCXE) 2 W UTC-5(-4DT) N36°47.30' W78°30.09'

WASHINGTON
L-36G
IAP

503 TPA-1303(800) NOTAM FILE DCA

RWY 18-36: H3400X50 (ASPH) S-12.5 0.5% up N

RWY 18: Road.

RWY 36: Brush.

AIRPORT REMARKS: Unattended. Arpt clsd SS-SR indef. Deer on and infov
arpt. Farm equipment operating near rwy. Rwy 18-36 severe cracking.
1-2 inches in places and along centerline. Rwy 18-36 longitudinal and
transverse cracking, some raveling in certain areas.

AIRPORT MANAGER: 434-372-5136

WEATHER DATA SOURCES: AWOS-3 121.225 (434) 372-4506.

COMMUNICATIONS: CTAF 122.9

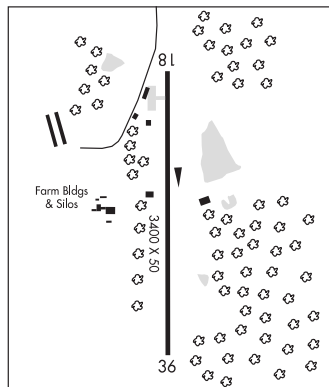
Ⓡ WASHINGTON CENTER APP/DEP CON 118.75

CLEARANCE DELIVERY PHONE: For CD ctc Washington ARTCC at
703-771-3587.

RADIO AIDS TO NAVIGATION: NOTAM FILE DCA.

SOUTH BOSTON (L) VORTAC 110.4 SBV Chan 41 N36°40.50'

W79°00.87' 080° 25.7 NM to fld. 520/5W.



CHESAPEAKE RGNL (See NORFOLK on page 362)