

MORTON

STROM FLD (39P) 0 SE UTC-8(-7DT) N46°33.02' W122°16.00'

SEATTLE

941 B NOTAM FILE SEA

RWY 07-25: H1810X40 (ASPH) MIRL

RWY 07: Thld dsplcd 200'. P-line.

RWY 25: Trees.

SERVICE: LGT ACTIVATE MIRL Rwy 07-25 and rotating bcn—CTAF.

AIRPORT REMARKS: Unattended. Trees near rwy. Trees, stream and brush in prim sfc. Deer and elk on and invof rwy. Ditch parallel rwy on Eastside. Rwy 07-25 markings faded.

AIRPORT MANAGER: (360) 496-5210

COMMUNICATIONS: CTAF 122.9

CLEARANCE DELIVERY PHONE: For CD ctc Seattle ARTCC at 253-351-3694.

MOSES LAKE

GRANT CO INTL (MWH)(KMWH) 5 NW UTC-8(-7DT) N47°12.52' W119°19.15'

SEATTLE

1189 B ARFF Index—See Remarks NOTAM FILE MWH

RWY 14L-32R: H13503X200 (CONC-GRVD) S-85, D-155, 2S-175, 2D-320, 2D/2D2-600 PCN 103R/B/W/T HIRL(NSTD)

RWY 14L: REIL. PAPI(P4L)—GA 3.0° TCH 75'. Bldg.

RWY 32R: MALSR. PAPI(P4L)—GA 3.0° TCH 76'. Rgt tfc.

RWY 04-22: H10000X100 (CONC-GRVD) S-75, D-100, 2S-127,

2D-175, 2D/2D2-475 PCN 92 R/B/W/T MIRL

RWY 04: REIL. PAPI(P4L)—GA 3.0° TCH 49'. 0.4% down.

RWY 22: REIL. VASI(V4L)—GA 3.0° TCH 50'. Rgt tfc. 0.3% up.

RWY 09-27: H3500X90 (CONC-GRVD) S-100, D-150, 2S-270,

2D-270, 2D/2D2-475 PCN 53 R/B/W/T RWY LGTS(NSTD) 0.3% up NW

RWY 27: Rgt tfc.

RWY 18-36: H3327X75 (ASPH) S-75, D-170, 2S-175, 2D-300,

2D/2D2-400 PCN 112F/A/W/T MIRL

RWY 18: Rgt tfc.

RWY 14R-32L: H2936X75 (CONC) S-100, D-200, 2S-175, 2D-400,

2D/2D2-400 PCN 107R/B/W/T

RWY 14R: Ground. Rgt tfc.

LAND AND HOLD—SHORT OPERATIONS

LDG RWY	HOLD—SHORT POINT	AVBL LDG DIST
RWY 04	14L-32R	4700
RWY 14L	04-22	7550
RWY 22	14L-32R	4650
RWY 32R	04-22	5050

RUNWAY DECLARED DISTANCE INFORMATION

RWY 04: TORA-10000 TODA-10000 ASDA-10000 LDA-10000

RWY 09: TORA-3500 TODA-3500 ASDA-3500 LDA-3500

RWY 14L: TORA-13503 TODA-13503 ASDA-13503 LDA-13503

RWY 14R: TORA-2936 TODA-2936 ASDA-2936 LDA-2936

RWY 22: TORA-10000 TODA-10000 ASDA-10000 LDA-10000

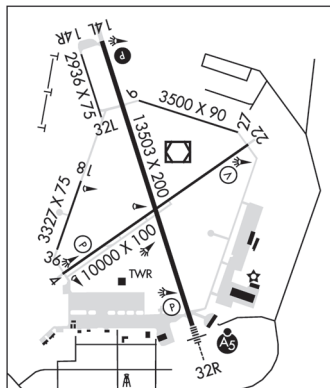
RWY 27: TORA-3500 TODA-3500 ASDA-3500 LDA-3500

RWY 32L: TORA-2936 TODA-2936 ASDA-2936 LDA-2936

RWY 32R: TORA-13503 TODA-13503 ASDA-13492 LDA-13492

SERVICE: S4 FUEL 100LL, JET A, A1+ **OX 1** LGT ACTVT MALSR Rwy 32R; REIL Rwy 04; PAPI Rwy 14L—CTAF. Rwy 14L-32R NSTD HIRL lctd 50' from rwy edge markings. Rwy 09-27 NSTD, mil ldg zone lgts only.

AIRPORT REMARKS: Attended continuously. Rwy 09-27 CLOSED exc mil ops. Rwy 14R-32L is CLOSED to all ngt ops exc taxiing. Rwy 14L-32R is CLOSED ngts 0600-1400Z± exc for special mil ngt trng ops. Flocks of large birds invof arpt April and October. Class IV, ARFF Index A. PPR for air carrier ops with more than 30 pax seats call 509-762-5363 from 0400-1400Z± ARFF dep staffed and equipped at Index D 24/7. Rwy 09-27 used as assault strip by C-17 acft. Rwy 09-27 and Twy F not visible from the twr. Rwy 18-36 avbl as air carrier twy movement area only. No edge intensity lgtg. Rwy 14L-32R first 10,000' AER 32R grvd 150' wide. Twy G unlighted. Extensive heavy mil jet acft ngt training 1900 PM-0300 AM lcl daily. Announce ldg intentions on CTAF after twr clsd. Heavy jet trng sfc to 5000' within 25 miles of arpt, possible wake turbulence from larger acft using Rwy 14L-32R and Rwy 09-27. Ldg fee. Landing fees for acft over 12,500.



SEATTLE

H-1C, L-13A

IAP, AD

CONTINUED ON NEXT PAGE

CONTINUED FROM PRECEDING PAGE

AIRPORT MANAGER: 509-762-5363

WEATHER DATA SOURCES: ASOS 119.05 (509) 762-5082. LAWRS.

COMMUNICATIONS: CTAF 118.25 ATIS 119.05 UNICOM 122.95

MOSES LAKE RCO 122.4 (SEATTLE RADIO)

Ⓡ GRANT COUNTY APP/DEP CON 126.4 (1400-0600Z)

Ⓡ SEATTLE CENTER APP/DEP CON 126.1 (0600-1400Z)

TOWER 128.0 (WEST) 118.25 (EAST) (1400-0600Z) GND CON 121.9

AIRSPACE: CLASS D svc 1400-0600Z; other times CLASS E.

RADIO AIDS TO NAVIGATION: NOTAM FILE MWH.

MOSES LAKE (H) VORW/DME 115.0 MWH Chan 97 N47°12.65' W119°19.01' at fld. 1193/18E.

PELLY NDB (MHW/LOM) 408 MW N47°06.94' W119°16.47' 324° 5.9 NM to fld. 1136/18E.

ILS 109.5 I-MWH Rwy 32R. Class IB. LOM PELLY NDB. ILS and COMLO unmonitored when ATCT clsd.

MOSES LAKE MUNI (W20) 2 NE UTC-8(-7DT) N47°08.52' W119°14.27'

SEATTLE

1203 B NOTAM FILE SEA

RWY 16-34: H2513X50 (ASPH) S-8 MIRL

RWY 16: PAPI(P2L)—GA 3.0°. Thld dspcd 466'. Tree.

RWY 34: PAPI(P2L)—GA 3.0°. Thld dspcd 253'. Bldg. Rgt tfc.

SERVICE: S4

AIRPORT REMARKS: Unattended. Bird haz. Ultraigt opr reqd to obtain arpt safety briefing from arpt mgnt prior to initial use of arpt. Pilots bring own ropes.

AIRPORT MANAGER: (509) 764-3777

COMMUNICATIONS: CTAF/UNICOM 123.0

CLEARANCE DELIVERY PHONE: For CD ctc Grant County Apch at 509-762-2842, when Apch clsd ctc Seattle ARTCC at 253-351-3694.

MOSES LAKE N47°12.65' W119°19.01' NOTAM FILE MWH.

SEATTLE

(H) VORW/DME 115.0 MWH Chan 97 at Grant Co Intl. 1193/18E.

H-1C, L-13A

RCO 122.4 (SEATTLE RADIO)

MOUNT CONSTITUTION N48°40.79' W122°50.48'

SEATTLE

RCO 122.3 (SEATTLE RADIO)

L-1E

NORMAN GRIER FLD (See KENT on page 195)

OAK HARBOR

AJ EISENBERG (OKH)(KOKH) 3 SW UTC-8(-7DT) N48°15.09' W122°40.42'

SEATTLE

193 B NOTAM FILE OKH

L-1E

RWY 07-25: H3265X25 (ASPH) S-5 LIRL(NSTD) 1.6% up E

IAP

RWY 07: PAPI(P2L). Thld dspcd 507'. Fence. Rgt tfc.

RWY 25: Tree.

SERVICE: FUEL 100LL LGT Rwy 07-25 NSTD LIRL only West 2620' rwy lgt'd. ACTIVATE NSTD LIRL Rwy 07 and 25—CTAF.

AIRPORT REMARKS: Unattended. PPR for ultralights and gliders ctc arpt mgr phone 360-672-5695. Deer near all movement areas. Rwy 07-25 has svr weathering, rutting, and raveling over 20% of the sfc. Rwy 07 markings are faded.

AIRPORT MANAGER: (360) 672-5695

WEATHER DATA SOURCES: AWOS-3 132.775 (360) 675-8431.

COMMUNICATIONS: CTAF/UNICOM 122.8 ATIS 134.15 (Thru Whidbey Island NAS/Ault Fld)

Ⓡ WHIDBEY APP/DEP CON 118.2

CLEARANCE DELIVERY PHONE: For CD ctc Whidbey Apch at 360-257-3310.

RADIO AIDS TO NAVIGATION: NOTAM FILE SEA.

PENN COVE (L) VORW/DME 117.2 CVV Chan 119 N48°14.68'

W122°43.47' 060° 2.1 NM to fld. 200/19E.

DME portion unusable:

126°-160° byd 30 NM blo 2,200'

250°-260° byd 30 NM blo 3,400'

330°-360° byd 30 NM blo 2,200'

ASR

