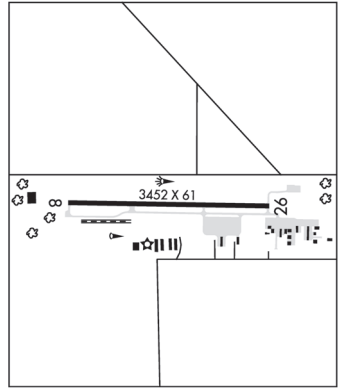


PROSSER (S4Ø) 1 NW UTC-8(-7DT) N46°12.80' W119°47.73'
 706 B TPA-1506(800) NOTAM FILE SEA
RWY 08-26: H3452X61 (ASPH) S-16 MIRL 0.6% up W
RWY 08: REIL. Trees.
RWY 26: REIL. Rgt tfc.
SERVICE: FUEL 100LL LGT ACTVT REIL Rwy 08 and Rwy 26; MIRL Rwy 08-26-CTAF.
AIRPORT REMARKS: Unatndd. Twys marked for ngst ops with retro-reflective devices. Pilots bring own ropes.
AIRPORT MANAGER: 509-713-1417
WEATHER DATA SOURCES: AWOS-1 121.125 (509) 786-8889.
COMMUNICATIONS: CTAF/UNICOM 122.8
CLEARANCE DELIVERY PHONE: For CD ctc Chinook Apch at 509-542-4209, when Apch clsd ctc Seattle ARTCC at 253-351-3694.
RADIO AIDS TO NAVIGATION: NOTAM FILE PSC.
PASCO (L) VORW/DME 109.8 PSC Chan 35 N46°16.22' W119°07.04' 248° 28.5 NM to fld. 406/15E.
 DME unusable:
 160°-170° byd 30 NM
COMM/NAV/WEATHER REMARKS: UNICOM 122.8: 1700-0100Z† only.

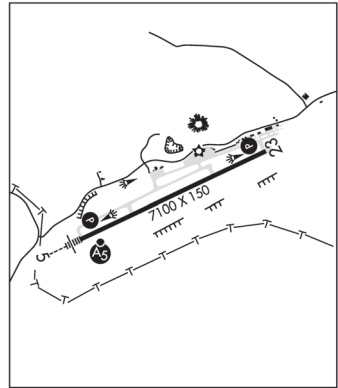
SEATTLE
 L-13A



PRU FLD (See RITZVILLE on page 214)

PULLMAN/MOSCOW RGNL (PUWJ)(KPUW) 3 NE UTC-8(-7DT) N46°44.50' W117°06.70'
 2567 B Class I, ARFF Index B NOTAM FILE PUW
RWY 05-23: H7100X150 (ASPH-GRVD) S-120, D-239, 2D-385 PCN 68 F/C/X/T HIRL
RWY 05: MALSR. PAPI(P4L)—GA 3.0° TCH 49'. RVR-T Fence.
RWY 23: REIL. PAPI(P4R)—GA 3.4° TCH 58'. RVR-R Ground.
RUNWAY DECLARED DISTANCE INFORMATION
RWY 05: TORA-7100 TODA-7100 ASDA-7100 LDA-7100
RWY 23: TORA-7100 TODA-7100 ASDA-7100 LDA-7100
SERVICE: S4 FUEL 100LL, JET A LGT ACTIVATE MALSR Rwy 05; REIL Rwy 23; PAPI Rwy 05 and 23; HIRL Rwy 05-23-CTAF.
AIRPORT REMARKS: Attended 1600-0200Z†. CLOSED to unscheduled air carrier ops with more than 30 pax seats exc PPR call arprt mgr 509-338-3223. Parachute Jumping. Non-paved areas soft. No parking between rwy and twy and within 30' of twy to the northwest. No non-paved acft ops auth. Ldg fee for all coml acft and all itinerant acft over 7,000 lbs. Fuel: Mogas on fld-509-332-6569.
AIRPORT MANAGER: 509-338-3223
WEATHER DATA SOURCES: ASOS 135.675 (509) 334-3222.
COMMUNICATIONS: CTAF/UNICOM 122.8
 RCO 122.6 (SEATTLE RADIO)

SEATTLE
 H-1C, L-13B
 IAP, AD



® SEATTLE CENTER APP/DEP CON 123.95
CLEARANCE DELIVERY PHONE: For CD if una to ctc on FSS freq, ctc Seattle ARTCC at 253-351-3694.
AIRSPACE: CLASS E svc 1400-0600Z† Mon-Fri, 1700-0000Z† Sat, 1900-0600Z† Sun; other times CLASS G.
RADIO AIDS TO NAVIGATION: NOTAM FILE PUW.
(L) VORW/DME 109.0 PUW Chan 27 N46°40.45' W117°13.41' 029° 6.1 NM to fld. 2772/20E. DME unmonitored.
ILS/DME 110.35 I-PUW Chan 40(Y) Rwy 05. Class IE.