

ROCK SPRINGS

SOUTHWEST WYOMING RGNL (RKS)(KRKS) 7 E UTC-7(-6DT) N41°35.65' W109°03.91'

SALT LAKE CITY
H-3E, L-11E
IAP, AD

6765 B ARFF Index—See Remarks NOTAM FILE RKS

RWY 09-27: H10000X150 (ASPH-GRVD) S-55, D-240, 2S-140, 2D-503 PCN 63 F/A/X/T HIRL

RWY 09: ODALS. PAPI(P4L)—GA 3.0° TCH 50'. 0.3% up.

RWY 27: MALSR. PAPI(P4L)—GA 3.0° TCH 55'. 0.4% down.

RWY 03-21: H5228X75 (ASPH-PFC) S-59, D-88, 2D-159

PCN 27 F/A/X/T MIRL 0.3% up NE

RWY 03: REIL. PAPI(P2L)—GA 3.0° TCH 30'.

RWY 21: REIL. PAPI(P2L)—GA 3.0° TCH 30'.

RUNWAY DECLARED DISTANCE INFORMATION

RWY 03: TORA-5228 TODA-5228 ASDA-5228 LDA-5228

RWY 09: TORA-10000 TODA-10000 ASDA-10000 LDA-10000

RWY 21: TORA-5228 TODA-5228 ASDA-5228 LDA-5228

RWY 27: TORA-10000 TODA-10000 ASDA-10000 LDA-10000

SERVICE: S2 FUEL 100LL, JET A1+ OX 3, 4 LGT ACTIVATE MALSR

Rwy 27, ODALS Rwy 09, REIL Rwy 03 and Rwy 21, HIRL Rwy 09-27 and twy lgts—CTAF. PAPI Rwy 09, Rwy 27, Rwy 03 and Rwy 21 opr continuously.

AIRPORT REMARKS: Attended 1130-0500Z†. PPR for air carrier ops with more than 30 Pax seats 1130-0500Z†, call arpt ops 307-352-6888. ARFF Index C avbl with 30 min notice: call arpt ops 307-352-6888.

AIRPORT MANAGER: 307-352-6880

WEATHER DATA SOURCES: ASOS 118.375 (307) 362-2541. SAWRS.

COMMUNICATIONS: CTAF/UNICOM 122.8

ROCK SPRING RCO 122.2 (CASPER RADIO)

Ⓡ **SALT LAKE CENTER APP/DEP CON** 124.35

CLEARANCE DELIVERY PHONE: For CD if una to ctc on FSS freq, ctc Salt Lake ARTCC at 801-320-2568.

AIRSPACE: CLASS E.

RADIO AIDS TO NAVIGATION: NOTAM FILE RKS.

ROCK SPRINGS (H) VORW/DME 116.0 OCS Chan 107 N41°35.41' W109°00.92' 263° 2.3 NM to fld. 6785/13E.

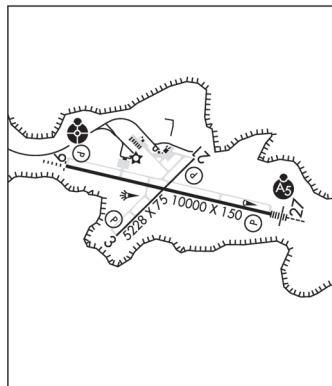
VOR unusable:

186°-195° byd 25 NM blo 14,000'

DME unusable:

122°-127° byd 25 NM blo 12,000'

ILS/DME 109.3 I-RKS Chan 30 Rwy 27. Class 1E.



SARATOGA

SHIVELY FLD (SAA)(KSAA) 1 SW UTC-7(-6DT) N41°26.61' W106°49.65'

CHEYENNE
H-3E, L-9E, 11E
IAP

7014 B NOTAM FILE CPR

RWY 05-23: H8801X100 (ASPH-PFC) S-50 PCN 50 F/D/X/U MIRL

RWY 05: REIL. PAPI(P4L)—GA 3.0° TCH 49'. 1.8% down.

RWY 23: REIL. PAPI(P4L)—GA 3.0° TCH 47'. 1.8% up.

SERVICE: FUEL 100LL, JET A LGT ACTVT REIL Rwy 05 and Rwy 23;

PAPI Rwy 05 and Rwy 23; MIRL Rwy 05-23—CTAF.

AIRPORT REMARKS: Attended Apr-Nov 1500-0000Z†, Dec-Mar 1500-2300Z†. Full svc fuel. Fee applied jet acct. After hrs call 307-326-8344. Antelope may be on rwy. Wind shear over highway approach end of Rwy 23. Ldg fee, \$100 for turbo jet and \$75 for turbo prop acct.

AIRPORT MANAGER: 307-326-8344

WEATHER DATA SOURCES: AWOS-3PT 118.175 (307) 326-5387.

COMMUNICATIONS: CTAF/UNICOM 122.8

Ⓡ **DENVER CENTER APP/DEP CON** 132.1

CLEARANCE DELIVERY PHONE: For CD ctc Denver ARTCC at 303-651-4257.

RADIO AIDS TO NAVIGATION: NOTAM FILE CPR.

CHEROKEE (H) VORW/DME 115.0 CKW Chan 97 N41°45.34'

W107°34.92' 104° 38.8 NM to fld. 7050/15E.

SARATOGA NDB (MHW) 266 SAA N41°26.70'

W106°49.93' at fld. 6925/12E.

