

**HAVRE CITY-COUNTY** (HVR)(KHVR) 3 W UTC-7(-6DT) N48°32.58' W109°45.74'

GREAT FALLS

2591 B NOTAM FILE HVR MON Airport

H-1E, L-13D

**RWY 08-26:** H5205X100 (ASPH) S-30, D-40, 2D-50 MIRL

IAP, AD

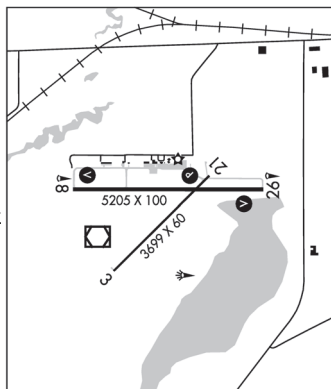
**RWY 08:** REIL. VASI(V4L)—GA 3.0° TCH 40'.**RWY 26:** REIL. VASI(V4L)—GA 3.0° TCH 37'.**RWY 03-21:** H3699X60 (ASPH) S-12.5 MIRL**RWY 21:** PAPI(P2R)—GA 3.0° TCH 21'.**RUNWAY DECLARED DISTANCE INFORMATION****RWY 03:** TORA-3699 TODA-3699 ASDA-3699 LDA-3699**RWY 08:** TORA-5205 TODA-5205 ASDA-5205 LDA-5205**RWY 21:** TORA-3699 TODA-3699 ASDA-3699 LDA-3699**RWY 26:** TORA-5205 TODA-5205 ASDA-5205 LDA-5205**SERVICE:** S2 FUEL 100LL, JET A+ LGT ACTVT REIL Rwy 08 and Rwy 26; PAPI Rwy 21; VASI Rwy 08 and Rwy 26; MIRL Rwy 03-21—CTAF.**AIRPORT REMARKS:** Attended 1300-0230Z†. Afd sfc cond call 24/7 406-390-5689. Deer on and invof arpt. Potential large flocks of waterfowl near AER 26.**AIRPORT MANAGER:** 406-265-4326**WEATHER DATA SOURCES:** ASOS 135.225 (406) 265-6638.**COMMUNICATIONS:** CTAF/UNICOM 122.8

RCO 122.5 (GREAT FALLS RADIO)

① SALT LAKE CENTER APP/DEP CON 133.4

**CLEARANCE DELIVERY PHONE:** For CD if una to ctc on FSS freq, ctc Salt Lake ARTCC at 801-320-2568.**AIRSPACE:** CLASS E svc 1300-2100Z†; other times CLASS G.**RADIO AIDS TO NAVIGATION:** NOTAM FILE HVR.

(L) VORW/DME 114.65 HVR Chan 93(Y) N48°32.43' W109°46.20' at fld. 2583/16E.

**HELENA RGNL** (HLN)(KHLN) P (ARNG) 2 NE UTC-7(-6DT) N46°36.40' W111°59.00'

GREAT FALLS

3877 B LRA Class I, ARFF Index B NOTAM FILE HLN MON Airport

H-1D, L-13C

**RWY 09-27:** H9000X150 (ASPH-PFC) D-160, 2S-175, 2D-250,

IAP, DIAP, AD

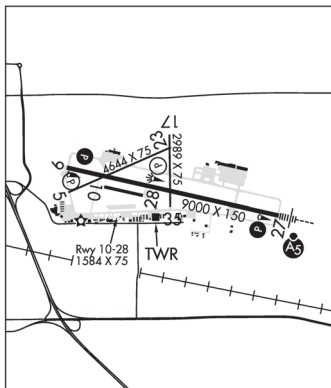
2D/2D2-420 PCN 50 F/C/X/U HIRL

**RWY 09:** REIL. PAPI(P4L)—GA 3.3° TCH 55'. Ground. 0.3% down.**RWY 27:** MALSR. PAPI(P4L)—GA 3.0° TCH 55'. Rgt tfc.**RWY 05-23:** H4644X75 (ASPH-PFC) S-21, D-30 PCN 6 F/C/X/U

MIRL 1.2% up SW

**RWY 05:** PAPI(P2L)—GA 3.0° TCH 40'. Road.**RWY 23:** PAPI(P2L)—GA 3.0° TCH 49'. Fence. Rgt tfc.**RWY 17-35:** H2989X75 (ASPH-PFC) PCN 5 F/C/X/U MIRL

1.7% up SE

**RWY 17:** REIL.**RWY 35:** REIL. Ground. Rgt tfc.**RWY 10-28:** 1584X75 (TURF) 0.3% up W**RUNWAY DECLARED DISTANCE INFORMATION****RWY 05:** TORA-4644 TODA-4644 ASDA-4644 LDA-4644**RWY 09:** TORA-9000 TODA-9000 ASDA-9000 LDA-9000**RWY 17:** TORA-2989 TODA-2989 ASDA-2989 LDA-2989**RWY 23:** TORA-4644 TODA-4644 ASDA-4644 LDA-4644**RWY 27:** TORA-9000 TODA-9000 ASDA-9000 LDA-9000**RWY 35:** TORA-2989 TODA-2989 ASDA-2989 LDA-2989**SERVICE:** S4 FUEL 80, 100, 100LL, JET A OX 1, 3 LGT When twr clsd ACTIVATE MALSR Rwy 27, REIL Rwy 09, Rwy 17 and Rwy 35, PAPI Rwy 09 and Rwy 27, HIRL Rwy 09-27, MIRL Rwy 05-23 and Rwy 17-35—CTAF.**MILITARY—** FUEL A+ (C406-442-2190. Opr 1200-0600Z†, OT \$125 fee) (NC-80, 100, 100LL)**AIRPORT REMARKS:** Attended 1200-0800Z†. ARFF coverage provided for scheduled Part 121 air carriers only exc with prior apvl, call 406-442-2821. Ldg rgts cstm avbl call 406-449-5506. Cold temperature airport. Altitude correction required at or below -17C. Rwy 17-35 and Rwy 05-23 (exc btn Twy F and Rwy 09-27) not avbl for air carrier use by acft with greater than 30 pax seats. Twy A, Twy B, and Twy C (btn Twy A and Rwy 35) not avbl for air carrier use by acft with greater than 30 pax seats. Ldg fee for all coml acft and all acft over 10,000 lbs. Flight Notification Service (ADCUS) avbl. NOTE: See SPECIAL NOTICE.**MILITARY REMARKS:** ARNG Opr Mon-Fri 1400-0030Z† Mon-Fri, exc hol. Exercise caution while taxiing. AASF ramp not stressed for large acft. Ctc flt ops for ramp advisory 126.2, DSN 406-324-5775, C406-324-5775. No tran svc Sat, Sun, hol or after 2300Z† Mon-Fri. Ft Harrison AAF (MT15) within Class D contact MT ARNG ops C406-324-5775/76 DSN 324-5775/76 for parapdrop operations information and hours.

CONTINUED ON NEXT PAGE

## CONTINUED FROM PRECEDING PAGE

AIRPORT MANAGER: 406-442-2821

WEATHER DATA SOURCES: ASOS 120.4 (406) 443-4317.

COMMUNICATIONS: CTAF 118.3 ATIS 120.4 UNICOM 122.95

RCO 122.55 (GREAT FALLS RADIO)

Ⓡ APP/DEP CON 119.5 229.4 (1300-0500Z±)

Ⓡ SALT LAKE CENTER APP/DEP CON 133.4 285.4 (0500-1300Z±)

TOWER 118.3 257.8 (1300-0500Z±) GND CON 121.9

ARNG OPS 40.65 126.2 321.45

CLEARANCE DELIVERY PHONE: For CD if una to ctc on FSS freq, ctc Salt Lake ARTCC at 801-320-2568.

AIRSPACE: CLASS D svc 1300-0500Z±; other times CLASS E.

RADIO AIDS TO NAVIGATION: NOTAM FILE HLN.

(H) VORTACW 117.7 HLN Chan 124 N46°36.41' W111°57.21' 254° 1.2 NM to fld. 3826/16E.

VOR portion unusable:

035°-050° byd 35 NM blo 12,000'

105°-165° byd 25 NM blo 17,000'

165°-185° byd 25 NM blo 13,500'

185°-230° byd 25 NM blo 17,500'

203°-213° byd 22 NM blo 13,000'

230°-270° byd 25 NM blo 12,500'

TACAN AZIMUTH & DME unusable:

035°-070° byd 35 NM blo 13,000'

165°-185° byd 25 NM blo 13,500'

250°-300° byd 25 NM blo 14,000'

320°-035° byd 25 NM blo 13,000'

TACAN DME unusable:

035°-070° byd 35 NM blo 13,000'

105°-150° byd 25 NM

105°-210° byd 15 NM blo 11,100'

105°-210° byd 20 NM blo 12,000'

150°-165° byd 25 NM blo 17,000'

165°-185° byd 25 NM blo 13,500'

185°-210° byd 25 NM

203°-213° byd 22 NM blo 13,000'

210°-250° byd 15 NM blo 12,000'

210°-250° byd 25 NM blo 17,500'

250°-300° byd 25 NM blo 14,000'

320°-035° byd 25 NM blo 13,000'

TACAN AZIMUTH unusable:

105°-150° byd 15 NM

150°-165° byd 15 NM blo 17,000'

185°-210° byd 15 NM

210°-250° byd 15 NM blo 17,500'

HAUSER NDB (MHW) 386 HAU N46°34.13' W111°45.48' 268° 9.6 NM to fld. 4026/16E. NDB unmonitored when HLN ATCT clsd.

ILS 110.1 I-HLN Rwy 27. Class IE. Unmonitored when ATCT closed. Localizer backcourse unusable byd 22° rgt of course, unusable within 2.7 DME.

### HELLER FARM (See WINIFRED on page 125)

**HINSDALE** (6U5) 0 SE UTC-7(-6DT) N48°23.28' W107°05.00'

**BILLINGS**

2220 NOTAM FILE GTF

**RWY 07-25:** 2200X75 (TURF) LIRL(NSTD) 0.7% up W

**RWY 07:** Road.

**RWY 10-28:** 2160X200 (TURF) 0.3% up W

**RWY 10:** Road.

**RWY 16-34:** 1960X75 (TURF) 1.5% up S

**RWY 16:** P-line.

**RWY 34:** Fence.

**SERVICE:** LGT Rwy 07-25 NSTD LIRL 335' spacing between lgts, one thld lgt each end. For rwy lgts phone 406-364-2387.

**AIRPORT REMARKS:** Unattended. Hay bales and farm equipment adjacent to rwy. Rwys soft when wet. Rwy 07-25, Rwy 10-28 and Rwy 16-34 marked with white cones full length of rwy.

**AIRPORT MANAGER:** (406) 672-2448

**COMMUNICATIONS:** CTAF 122.9

**CLEARANCE DELIVERY PHONE:** For CD ctc Salt Lake ARTCC at 801-320-2568.