

GREENWOOD—LEFLORE (GWO)(KGWO) 6 E UTC-6(-5DT) N33°29.60' W90°05.20'

162 B NOTAM FILE GWO MON Airport

RWY 18-36: H6501X150 (ASPH) S-100, D-176, 2S-175, 2D-300, 2D/2D2-560 HIRL

RWY 18: MALSR.

RWY 36: REIL. PAPI(P4L)—GA 3.0° TCH 50'.

RWY 05-23: H5011X150 (ASPH) S-30 MIRL 0.3% up NE

RWY 05: VASI(V4L)—GA 3.0° TCH 33'. Trees.

RWY 23: REIL. PVASI(PSIR). Trees.

SERVICE: S4 **FUEL** 100LL, JET A, A1+ **LGT** When twr clsd, ACTVT MALSR Rwy 18; PAPI Rwy 36; MIRL Rwy 05-23; HIRL Rwy 18-36—CTAF. VASI Rwy 05 opr consly. Rwy 05-23 edge intensity lgts OTS indef, NOTAM has been issued.

AIRPORT REMARKS: Attended continuously. CLSD 2 days each at Thanksgiving and Christmas, 1 day for New Year's. Fuel avbl Mon-Fri 1500-0000Z†, Sat-Sun 1600-2200Z†. Fee for fuel aft hrs call 662-392-3988, 662-392-8899 or 662-455-5530 for svc after hrs. Powerplant and airframe repairs in emerg or by appt. AMGR limits GWT Rwy 05-23 to S-42, D-60 in unusual situations. Pilots must provide their own tiedown ropes.

AIRPORT MANAGER: 662-453-1526

WEATHER DATA SOURCES: ASOS 119.975 (662) 453-3304.

COMMUNICATIONS: CTAF 118.35 UNICOM 122.95

RCO 122.2 (GREENWOOD RADIO)

® **MEMPHIS CENTER APP/DEP CON** 132.5

TOWER 118.35 (1400-0000Z†) **GND CON** 125.55 **CLNC DEL** 125.55

CLEARANCE DELIVERY PHONE: For CD ctc Memphis ARTCC at 901-368-8453/8449.

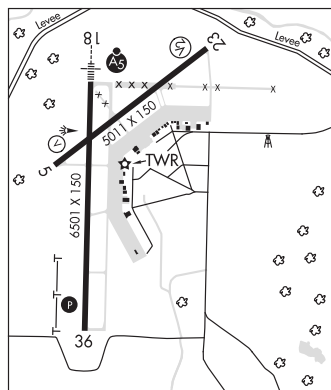
AIRSPACE: CLASS D svc 1400-0000Z†; other times CLASS E.

RADIO AIDS TO NAVIGATION: NOTAM FILE GWO.

SIDON (H) VORTAC 114.7 SQS Chan 94 N33°27.83' W90°16.64' 077° 9.7 NM to fld. 127/3E.

TEOCK NDB (LOMW) 349 GW N33°35.52' W90°05.06' 182° 5.9 NM to fld. 140/1W.

ILS 111.3 I-GWO Rwy 18. Class IT. LOM TEOCK NDB.



MEMPHIS

H-6J, L-18G

IAP, AD

GRANADA MUNI (GNF)(KGNF) 3 N UTC-6(-5DT) N33°49.95' W89°47.89'

208 B NOTAM FILE GWO

RWY 13-31: H7000X150 (ASPH) S-60, D-200, 2S-175, 2D-300

MIRL

RWY 13: MALSR. VASI(V4L)—GA 3.0° TCH 52'.

RWY 31: VASI(V4L)—GA 3.0° TCH 56'. Trees.

RWY 04-22: H4998X99 (ASPH) S-60, D-200, 2S-175, 2D-300

RWY 04: Trees.

RWY 22: Thld dspld 272'. Road.

SERVICE: **FUEL** 100LL, JET A

AIRPORT REMARKS: Attended Sun-Sat on call, 662-227-8402. For fuel call 662-227-8402 or 662-230-3646; aft hrs call 662-699-9460.

Aerobic acct dalgt hrs; 7000 ft and blw within 3 NM of arpt. Birds and deer invof arpt. Extsv agriculture ops invof arpt SR-SS Mar-Oct. Rwy 13 and 31 200 ft by 150 ft asph ovrn avbl. Rwy 04-22 asph cracked and has depressions. Rwy 04-22 markings faded. Rwy 13-31 mkgs faded.

AIRPORT MANAGER: 662-227-3457

WEATHER DATA SOURCES: AWOS-3PT 118.025 (662) 227-3407.

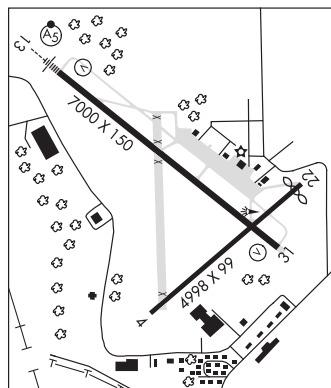
COMMUNICATIONS: CTAF/UNICOM 122.8

MEMPHIS CENTER APP/DEP CON 128.5

CLEARANCE DELIVERY PHONE: For CD ctc Memphis ARTCC at 901-368-8453/8449.

RADIO AIDS TO NAVIGATION: NOTAM FILE GWO.

SIDON (H) VORTAC 114.7 SQS Chan 94 N33°27.83' W90°16.64' 044° 32.6 NM to fld. 127/3E.



MEMPHIS

H-6J, L-18G

IAP