

OKTIBBEHA (M51) 7 NE UTC-6(-5DT) N33°29.86' W88°40.89'

MEMPHIS
L-18G
IAP

250 NOTAM FILE GWO

RWY 14-32: 2600X150 (TURF)

RWY 14: Trees.

RWY 32: Trees.

RWY 01-19: 2237X150 (TURF)

RWY 01: Trees.

RWY 19: Trees.

AIRPORT REMARKS: Attended Sat-Sun. Rwy 14-32 marked by mowing and white jugs 75' apart. Rwy 01-19 marked by mowing and white jugs 75' apart.

AIRPORT MANAGER: 662-341-2345

COMMUNICATIONS: CTAF/UNICOM 122.8

Ⓡ **COLUMBUS APP/DEP CON** 135.6 (1300-0100Z± Mon-Fri, 1600-2300Z± Sun, clsd Sat and holidays. Other times ctc

Ⓡ **MEMPHIS CENTER APP/DEP CON** 127.1

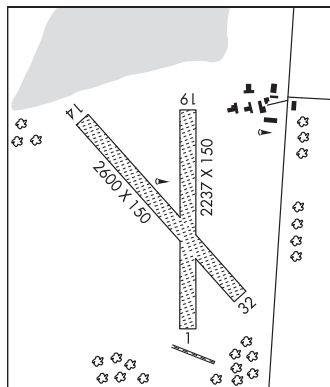
CLEARANCE DELIVERY PHONE: For CD ctc Memphis ARTCC at 901-368-8453/8449.

RADIO AIDS TO NAVIGATION: NOTAM FILE GWO.

BIGBEE (L) VORTACW 116.2 IGB Chan 109 N33°29.13' W88°30.82' 271° 8.5 NM to fld. 245/4E.

VOR portion unusable:
010°-020°
200°-260° blo 5,000'

COMM/NAV/WEATHER REMARKS: UNICOM OTS indef.



STENNIS INTL (See BAY ST LOUIS on page 125)

TALLULAH

VICKSBURG TALLULAH RGNL (TVR)(KTVR) 9 E UTC-6(-5DT) N32°21.10' W91°01.66'

MEMPHIS
H-6I, L-18F
IAP

86 B TPA-1086(1000) NOTAM FILE TVR

RWY 18-36: H5002X100 (ASPH) S-60, D-75 MIRL

RWY 18: REIL. PAPI(P4L)—GA 3.0° TCH 50'. Trees.

RWY 36: SSALR. PAPI(P4L)—GA 3.0° TCH 50'. Trees.

RUNWAY DECLARED DISTANCE INFORMATION

RWY 18: TORA-5002 TODA-5002 ASDA-5002 LDA-5002

RWY 36: TORA-5002 TODA-5002 ASDA-5002 LDA-5002

SERVICE: S4 FUEL 100LL, JET A LGT MIRL Rwy 18-36, REIL Rwy 18, SSALR Rwy 36 preset low ints dusk-dawn, to increase ints ACTIVATE—CTAF.

AIRPORT REMARKS: Attended 1300-0100Z±. For arpt mgr aft hrs call 318-366-1615. PAEW on arpt. Migratory birds invof arpt. Crop dusting activity 2 NM radius of arpt. Pilots in tfc pattern are requested to avoid over flight of Mound, LA 1/2 mile south and east of Rwy 36.

AIRPORT MANAGER: 318-574-5841

WEATHER DATA SOURCES: ASOS 118.525 (318) 574-4866.

COMMUNICATIONS: CTAF/UNICOM 123.0

MEMPHIS CENTER APP/DEP CON 132.5

CLEARANCE DELIVERY PHONE: For CD ctc Memphis ARTCC at 901-368-8453/8449.

RADIO AIDS TO NAVIGATION: NOTAM FILE GWO.

MAGNOLIA (H) VORTACW 113.2 MHz Chan 79 N32°26.04' W90°05.99' 265° 47.4 NM to fld. 407/1W.

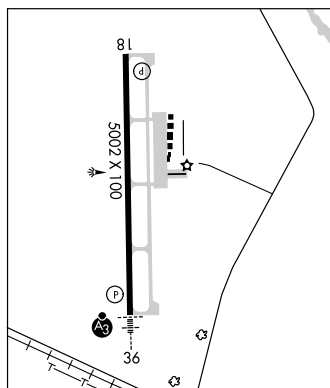
TACAN AZIMUTH unusable;

240°-275° byd 30 NM blo 2,000'

DME unsl 240-275 byd 30 NM blo 2000¥

TALLULAH NDB (MHW/LOM) 344 TKH N32°14.72' W91°01.55' 357° 6.4 NM to fld. 79/2E. NOTAM FILE DRI.

ILS 109.7 I-TV Rwy 36. Class IE.



TEOCK N33°35.52' W90°05.06' NOTAM FILE GWO.

MEMPHIS
L-18G

NDB (LOMW) 349 GW 182° 5.9 NM to Greenwood-Leflore. 140/1W.

THIGPEN FLD (See BAY SPRINGS on page 124)

TISHOMINGO CO (See BELMONT on page 125)