

AUSTIN

AUSTIN EXEC (EDC)(KEDC) 12 NE UTC-6(-5DT) N30°23.85' W97°33.98'

620 B NOTAM FILE EDC

RWY 13-31: H6025X100 (ASPH) D-101 MIRL 0.4% up NW

RWY 13: REIL. PAPI(P4L)—GA 3.0° TCH 40'. Thld displcd 600'. Tree.

RWY 31: REIL. PAPI(P4L)—GA 3.0° TCH 40'.

RWY 16-34: H1550X25 (ASPH) S-8 1.0% up N

SERVICE: S4 FUEL 100LL, JET A LGT ACTIVATE MIRL Rwy 13-31, REIL Rwy 13 and Rwy 31—CTAF. PAPI Rwy 13 and Rwy 31 opr continuously.

AIRPORT REMARKS: Attended continuously. Fuel avbl 24 hrs with credit card. Acft tiedowns and buildings within Rwy 16-34 primary sfc. Rwy 16-34 twy unmarked. Rwy 13-31 twy edges are marked by reflector posts. Northwest end of Rwy 13-31 and parallel twy have a 16' descending embankment off end of pavement. Touch and go landings prohibited. VFR departures requesting ATC svc remain clear of the final apch course of Rwy 17L and Rwy 17R. If the acft is initially eastbound, ctc Austin Apch Ctl on 127.22. If the acft is initially westbound ctc Austin Apch Ctl on 125.32. Austin clearance delivery 126.025. Rwy 16-34 numbers 20' tall and centerline markings only.

AIRPORT MANAGER: 512-247-7678

WEATHER DATA SOURCES: AWOS-3 118.825 (512) 616-2967.

COMMUNICATIONS: CTAF 120.3 UNICOM 122.975

Ⓡ **AUSTIN APP/DEP CON** 127.225

EXECUTIVE TOWER 120.3 (1200-0400Z‡)

GND CON 119.45 **CLNC DEL** 126.025 (Aus App/Dep when EDC twr clsd)

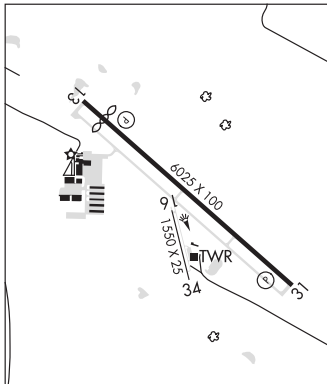
CLEARANCE DELIVERY PHONE: For CD ctc Austin Apch at 512-369-7865.

AIRSPACE: CLASS D svc 1200-0400Z‡; other times CLASS E.

RADIO AIDS TO NAVIGATION: NOTAM FILE AUS.

CENTEX (H) VORTACX 112.8 CWK Chan 75 N30°22.71' W97°31.79' 295° 2.2 NM to fld. 593/6E.

SAN ANTONIO
H-7C, L-19C, 21A
IAP, AD



AUSTIN-BERGSTROM INTL (AUS)(KAUS) P (ARNG) 5 SE UTC-6(-5DT) N30°11.67' W97°40.19'

542 B LRA Class I, ARFF Index D NOTAM FILE AUS

RWY 18R-36L: H12250X150 (CONC-GRVD) S-75, D-210, 2D-618, 2D/2D2-913 PCN 98 R/B/W/T HIRL

RWY 18R: MALS. PAPI(P4L)—GA 3.0° TCH 60'. RVR-TR Rgt tfc.

RWY 36L: MALS. PAPI(P4L)—GA 3.0° TCH 60'. RVR-TR

RWY 18L-36R: H9000X150 (CONC-GRVD) S-75, D-210, 2D-618, 2D/2D2-913 PCN 92 R/B/W/T HIRL CL

RWY 18L: ALSF2. TDZL. PAPI(P4L)—GA 3.0° TCH 74'. RVR-TMR Tower.

RWY 36R: MALS. TDZL. PAPI(P4L)—GA 3.0° TCH 59'. RVR-TMR Rgt tfc.

RUNWAY DECLARED DISTANCE INFORMATION

RWY 18L: TORA-9000 TODA-9000 ASDA-9000 LDA-9000

RWY 18R: TORA-12250 TODA-12250 ASDA-12250 LDA-12250

RWY 36L: TORA-12250 TODA-12250 ASDA-12250 LDA-12250

RWY 36R: TORA-9000 TODA-9000 ASDA-9000 LDA-9000

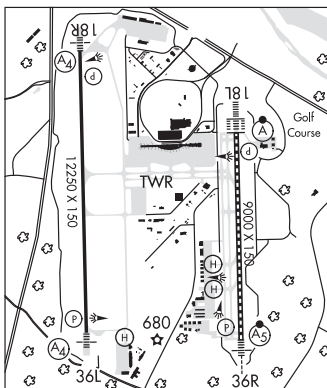
SERVICE: S2 FUEL 100LL, JET A QX 3, 4 **MILITARY—FUEL A+** (C512-530-5451) (NC-100LL, A) **FLUID** HPOX

NOISE: Noise abatement: All dep follow ATC instructions; climb ASAP to 4000' or above. During the hrs 0600-1200Z‡ arrg acft will be asgnd

Rwy 36L or Rwy 36R and departing acft will be asgnd Rwy 18L or Rwy 18R to avoid noise sensitive areas.

AIRPORT REMARKS: Attended continuously. Bird activity on and in/ovf arpt. PPR general aviation acft on the passenger terminal apron, call ops 512-530-7550. Declared low visibility CONDS require ATCT communication prior to push back. PPR engine maintenance run-ops call ops 512-530-7550. PPR for non State of Texas aircraft entering the State Ramp abeam Twy E. Call State OPS 512-936-8900 or FREQ. 131.375. Twy A clsd to acft with wingspan more than 171'. Txln C2 btwn G1 and G3, and Txln R1 and R5 clsd 0200-1400Z‡.

SAN ANTONIO
H-7C, L-19C, 21A
IAP, AD



CONTINUED ON NEXT PAGE

CONTINUED FROM PRECEDING PAGE

AIRPORT MANAGER: 512-530-2242
 WEATHER DATA SOURCES: ASOS (512) 369-7881 WSP.
 COMMUNICATIONS: UNICOM 122.95 D-ATIS 124.4 (512) 369-7867.
 AUSTIN RCO 122.55 (SAN ANGELO RADIO)
 Ⓡ AUSTIN APP/DEP CON 127.225 (East) 120.875 (South) 119.0 (West)
 AUSTIN TOWER 121.0 GND CON 121.9 CLNC DEL 125.5
 CPDLC (LOGON KUSA)
 PDC

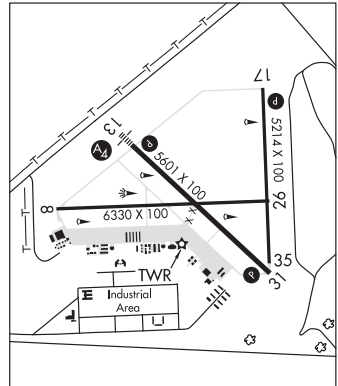
AIRSPACE: CLASS C svc ctc APP CON.
 RADIO AIDS TO NAVIGATION: NOTAM FILE AUS.
 CENTEX (H) VORTACW 112.8 CWK Chan 75 N30°22.71' W97°31.79' 207° 13.2 NM to fld. 593/6E.
 CREED NDB (LOMW) 255 BS N30°05.38' W97°40.57' 359° 6.3 NM to fld. 583/4E.
 ILS/DME 110.5 I-VNK Chan 42 Rwy 18L. Class IIIE. DME also serves Rwy 36R.
 ILS/DME 110.95 I-GFQ Chan 46(Y) Rwy 18R. Class IE. DME also serves Rwy 36L.
 ILS/DME 110.95 I-BSM Chan 46(Y) Rwy 36L. Class IE. LOM CREED NDB. DME also serves Rwy 18R.
 ILS/DME 110.5 I-HCE Chan 42 Rwy 36R. Class IE. DME also serves Rwy 18L.

HELIPAD H1: H60X60 (CONC)
 HELIPAD H2: H60X60 (CONC)
 HELIPAD H3: H50X50 (CONC)

SAN MARCOS RGNL (HYI)(KHYI) 31 S UTC-6(-5DT) N29°53.57' W97°51.78'

SAN ANTONIO
 H-7C, L-19C, 21A
 IAP AD

595 B ARFF Index—See Remarks NOTAM FILE HYI
 RWY 08-26: H6330X100 (ASPH) S-80 MIRL
 RWY 08: REIL. Fence.
 RWY 26: REIL.
 RWY 13-31: H5601X100 (ASPH) S-60 MIRL 0.4% up NW
 RWY 13: MALS. PAPI(P2L)—GA 3.0° TCH 57'.
 RWY 31: PAPI(P2L)—GA 3.0° TCH 60'.
 RWY 17-35: H5214X100 (ASPH) S-20 MIRL 0.4% up N
 RWY 17: PAPI(P2L)—GA 3.0° TCH 55'.
 SERVICE: S5 FUEL 100LL, JET A OX 2, 4 LGT MIRL Rwy 08-26,
 13-31 and 17-35 preset low intst; to incr instst and actvt MALS Rwy
 13; PAPI Rwy 17, 13 and 31—CTAF.
 AIRPORT REMARKS: Attended sunrise-sunset. 100LL self service with major
 credit card. Equivalent ARFF Index A equip avbl on req. 6ft-8ft
 cultivation ocly obsts apchs. Apn all ireg sfc.
 AIRPORT MANAGER: 512-216-6039
 WEATHER DATA SOURCES: AWOS-3PT (512) 353-8005
 COMMUNICATIONS: CTAF 126.825 ATIS 120.825 (512-353-8005)
 (1300-0300Z‡)



Ⓡ AUSTIN APP/DEP CON 119.0
 TOWER 126.825 (1300-0300Z‡)
 GND CON/CLNC DEL 120.125 CLNC DEL 121.35 (When twr clsd)
 CLEARANCE DELIVERY PHONE: For CD ctc Austin Apch at 512-369-7865.
 AIRSPACE: CLASS D svc 1300-0300Z‡ eff 01 Apr 2021; other times CLASS E.
 RADIO AIDS TO NAVIGATION: NOTAM FILE AUS.
 CENTEX (H) VORTACW 112.8 CWK Chan 75 N30°22.71' W97°31.79' 205° 33.9 NM to fld. 593/6E.
 GARYS NDB (LOMW) 272 RU N29°57.52' W97°56.94' 124° 6.0 NM to fld. 819/7E. NOTAM FILE HYI.
 ILS 108.7 I-RUM Rwy 13. Class IT. LOM GARYS NDB. ILS and LOM unmonitored. LOC unusable byd 30° left of
 course.

AVENGER FLD (See SWEETWATER on page 409)

BAILES (See ANGLETON on page 236)