

**NAVASOTA** N30°17.31' W96°03.49' NOTAM FILE CXO.  
(H) **VOR/DME** 115.9 TNV Chan 106 321° 5.5 NM to Navasota Muni. 247/8E.

HOUSTON

H-7C, L-19D, 21A, GOMW

DME unusable:  
005°-072° byd 18 NM blo 3,000'  
073°-077° byd 18 NM blo 2,000'  
078°-106° byd 18 NM blo 3,000'

VOR portion unusable:  
000°-073° byd 18 NM blo 3,000'  
074°-077° byd 18 NM blo 2,000'  
078°-085° byd 18 NM blo 3,000'  
086°-145° byd 18 NM blo 6,000'  
086°-145° byd 35 NM  
146°-359° byd 18 NM blo 2,000'  
261°-271° byd 39 NM blo 5,000'

**NEW BRAUNFELS RGNL** (BAZ)(KBAZ) 4 E UTC-6(-5DT) N29°42.35' W98°02.59'  
658 B NOTAM FILE BAZ

SAN ANTONIO

H-7B, L-19C

IAP, AD

**RWY 13-31:** H6503X100 (ASPH) S-30, D-60 MIRL

**RWY 13:** MALS. REIL. PAPI(P4L)—GA 3.0° TCH 50'.

**RWY 31:** PAPI(P4L)—GA 3.0° TCH 50'. Tree.

**RWY 17-35:** H5364X100 (ASPH) S-25 MIRL

**RWY 17:** Thld dsplcd 522'.

**SERVICE:** FUEL 100LL, JET A, A+ LGT Actvt MIRL rwys 13-31 and 17-35—CTAF.

**AIRPORT REMARKS:** Attended 1300-0100Z†. Numerous birds invof arpt. For fuel call 830-221-4290; after hrs call 830-221-4100, 24 hr self service avbl with major credit card. High performance mil act oper at Randolph AFB AUX (Seguin) Afd. Helicopters rgt tfc.

**AIRPORT MANAGER:** 830-221-4290

**WEATHER DATA SOURCES:** ASOS 119.325 (830) 629-7979.

**COMMUNICATIONS:** CTAF 127.05 ATIS 119.325 UNICOM 122.7

Ⓡ SAN ANTONIO APP CON 124.45

Ⓡ SAN ANTONIO DEP CON 128.05

**TOWER** 127.05 (1300-0100Z†) **GND CON** 120.175

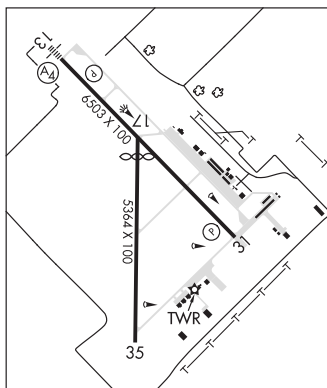
**CLNC DEL** 134.75

**CLEARANCE DELIVERY PHONE:** For CD when ATCT is clsd ctc sat Apch at 210-805-5516.

**AIRSPACE:** CLASS D svc 1300-0100Z†; other times CLASS G.

**RADIO AIDS TO NAVIGATION:** NOTAM FILE SAT.

**SAN ANTONIO (H) VORTACW** 116.8 SAT Chan 115 N29°38.64' W98°27.68' 072° 22.2 NM to fld. 1159/8E.



**NEWMAN** N31°57.11' W106°16.35' NOTAM FILE ABQ.  
(L) **VORTACW** 112.4 EWM Chan 71 210° 8.2 NM to Biggs AAF (Fort Bliss). 4041/12E.  
TACAN AZIMUTH & DME portion unusable:  
220°-255° byd 25 NM blo 12,000'

EL PASO

H-4L, L-6F

**NEWTON MUNI** (61R) 3 NE UTC-6(-5DT) N30°53.04' W93°44.55'  
322 B NOTAM FILE CXO

HOUSTON

L-19E, 21B

**RWY 14-32:** H4000X60 (ASPH) S-12.5 LIRL 0.9% up NW

**RWY 14:** Trees.

**RWY 32:** Trees.

**AIRPORT REMARKS:** Unattended. Rwy sfc rough. Some pot holes.

**AIRPORT MANAGER:** 409-379-5691

**COMMUNICATIONS:** CTAF/UNICOM 122.8

**RCO** 122.2 (MONTGOMERY COUNTY RADIO)

**CLEARANCE DELIVERY PHONE:** For CD ctc Polk Apch at 337-531-2352.

**RADIO AIDS TO NAVIGATION:** NOTAM FILE LFK.

**LUFKIN (H) VORTACW** 112.1 LFK Chan 58 N31°09.75'

W94°43.01' 103° 52.9 NM to fld. 207/5E.

TACAN AZIMUTH & DME unusable:

260°-275° byd 30 NM

275°-260° byd 30 NM blo 2,500'

