

**EASTMAN**

**HEART OF GEORGIA RGNL** (EZM)(KEZM) 3 E UTC-5(-4DT) N32°12.98' W83°07.72'

**ATLANTA**  
H-9B, 12F, L-18J  
IAP, AD

303 B NOTAM FILE MCN MON Airport

**RWY 02-20:** H6506X100 (ASPH) S-75, D-120 HIRL

**RWY 02:** MALSR. PAPI(P4L)—GA 3.0° TCH 45'.

**RWY 20:** REIL. PAPI(P4L)—GA 3.0° TCH 45'. Trees.

**SERVICE:** S4 FUEL 100LL, JET A+ LGT HIRL Rwy 02-20 and PAPI Rwy 02 and Rwy 20 and REIL Rwy 20 and MALSF Rwy 02—CTAF. Rotating bcn ops dusk-0500Z‡.

**AIRPORT REMARKS:** Attended Mon-Sat 1300-2300Z‡, Sun 1800-2200Z‡. 24 hr self-fueling with credit card. Deer and other wildlife invof arpt. Flt trng in area.

**AIRPORT MANAGER:** 478-374-4411

**WEATHER DATA SOURCES:** AWOS-3 119.425 (478) 374-9979.

**COMMUNICATIONS:** CTAF 124.55 ATIS 119.425 UNICOM 122.95

Ⓡ ATLANTA APP/DEP CON 124.2 (1115-0400Z‡)

JAX CENTER APP/DEP CON 127.575 (0400-1115Z‡)

TOWER 124.55 (Mon-Thu 1100-2000Z‡, Fri 1200-1600Z‡)

GND CON 121.175

**AIRSPACE:** CLASS D svc Mon-Thu 1100-2000Z‡, Fri 1200-1600Z‡; other times CLASS G.

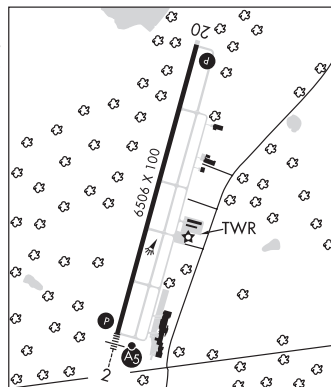
**RADIO AIDS TO NAVIGATION:** NOTAM FILE MCN.

VIENNA (L) VORTAC 116.5 VNA Chan 112 N32°12.81'

W83°29.84' 088° 18.8 NM to fld. 300/1E.

EASTMAN NDB (MHW) 366 EZM N32°07.90' W83°09.24' 018° 5.2 NM to fld. 321/4W.

ILS 109.55 I-HUV Rwy 02. Class IT.



**ELBERT CO-PATZ FLD** (See ELBERTON on page 205)

**ELBERTON**

**ELBERT CO-PATZ FLD** (EBA)(KEBA) 2 E UTC-5(-4DT) N34°05.72' W82°49.05'

**ATLANTA**  
H-9B, L-18J  
IAP

603 B NOTAM FILE MCN

**RWY 11-29:** H5004X75 (ASPH) S-30 MIRL

**RWY 11:** PAPI(P2L)—GA 3.75° TCH 42'. Trees.

**RWY 29:** PAPI(P2L)—GA 3.75° TCH 46'. Trees.

**SERVICE:** FUEL 100LL LGT ACTIVATE MIRL Rwy 11-29; PAPI Rwy 11 and Rwy 29—CTAF.

**AIRPORT REMARKS:** Attended Mon-Sat 1300-2300Z‡, Sun 1800-2300Z‡. Deer on and invof arpt. Power line and poles 30' tall lctd 220' south of RCL. Road lctd 200' south of RCL. Rising terrain 10' high lctd north of Rwy 11-29 starting from RCL. Rwy 29 apch: trees 36' tall, lctd 452' from rwy end, 280' south of RCL. Trees 57' tall, lctd 770' from rwy end, 295' south of RCL. Trees 66' tall, lctd 992' from rwy end, 30' south of RCL.

**AIRPORT MANAGER:** 706-283-2035

**WEATHER DATA SOURCES:** AWOS-3 118.15 (706) 283-8133.

**COMMUNICATIONS:** CTAF/UNICOM 122.8

Ⓡ ATLANTA CENTER APP/DEP CON 127.5

**CLEARANCE DELIVERY PHONE:** For CD ctc Atlanta ARTCC at 770-210-7692.

**RADIO AIDS TO NAVIGATION:** NOTAM FILE AND.

ELECTRIC CITY (L) VORTACW 108.6 ELW Chan 23 N34°25.15'

W82°47.08' 185° 19.5 NM to fld. 736/OE.

