

## NORTH MYRTLE BEACH

**GRAND STRAND** (CRE)(KCRE) 1 NW UTC-5(-4DT) N33°48.71' W78°43.44'

32 B NOTAM FILE CRE MON Airport

**RWY 05-23:** H5997X100 (ASPH) S-76, D-112 PCN 29 F/B/X/T HIRL

**RWY 05:** REIL. PAPI(P2L)—GA 3.0° TCH 40'. Trees.

**RWY 23:** MALSR. PAPI(P2R)—GA 2.98° TCH 55'. Trees. Rgt tfc.

**SERVICE:** FUEL 100LL, JET A LGT After 0500Z‡ ACTIVATE HIRL Rwy 05-23, REIL Rwy 05, and MALSR Rwy 23—CTAF.

**AIRPORT REMARKS:** Attended 1200-0200Z‡. Gulls on and invof arpt. Extv banner tow ops from arpt along coastline 10 NM NE to 20 SW.

**AIRPORT MANAGER:** 843-448-1580

**WEATHER DATA SOURCES:** ASOS 119.625 (843) 361-2802.

**COMMUNICATIONS:** CTAF 124.6 ATIS 119.625 UNICOM 122.95

**RCO 122.1R 114.4T** (ANDERSON RADIO)

Ⓡ **MYRTLE BEACH APP/DEP CON** 119.2 (1100-0400Z‡)

**JAX CENTER APP/DEP CON** 134.375 (0400-1100Z‡)

**TOWER** 124.6 (1200-0200Z‡) **GND CON** 121.8 **CLNC DEL** 121.8

**CLEARANCE DELIVERY PHONE:** For CD when ATCT clsd ctc Myrtle Beach Apch at 843-477-2727/2704. when MYR Apch clsd ctc Jacksonville ARTCC at 904-845-1592.

**AIRSPACE:** CLASS D svc 1200-0200Z‡; other times CLASS G.

**RADIO AIDS TO NAVIGATION:** NOTAM FILE CRE.

(L) **VORTAC** 114.4 CRE Chan 91 N33°48.83'

W78°43.47' at fld. 27/3W.

TACAN AZIMUTH unusable:

085°-095° byd 35 NM

290°-340°

341°-029° byd 25 NM

DME unusable:

085°-095° byd 35 NM

290°-340°

341°-029° byd 25 NM

VOR unusable:

220°-225° byd 25NM

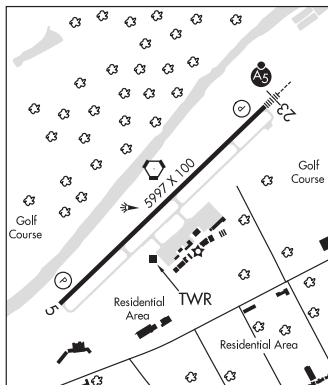
280°-310° byd 13 NM

**ILS/DME** 111.7 I-CRE Chan 54 Rwy 23. Class IT.

CHARLOTTE

H-9C, 12G, L-35A

IAP, AD



**OCONEE CO RGNL** (See CLEMSON on page 361)

## ORANGEBURG

**DRY SWAMP** (1DS) 6 S UTC-5(-4DT) N33°23.06' W80°54.42'

180 NOTAM FILE AND

**RWY 02-20:** 2900X60 (TURF)

**RWY 02:** Thld dsplcd 900'. Tree.

**RWY 20:** Thld dsplcd 900'. Tree.

**SERVICE:** S4 FUEL 100LL

**AIRPORT REMARKS:** Attended Wed-Mon dawn-dusk. Attended Tues dawn-1700Z‡. Unattended Tues afternoons. Glider ops on and invof arpt.

**AIRPORT MANAGER:** 803-534-3157

**COMMUNICATIONS:** CTAF 122.9

**CLEARANCE DELIVERY PHONE:** For CD ctc Columbia Apch at 803-822-5242 or 803-822-5040.

CHARLOTTE