

## AGUADILLA

**RAFAEL HERNANDEZ** (BQN)(TJBQ) 3 NE UTC-4 N18°29.69' W67°07.77'

237 B Class I, ARFF Index B NOTAM FILE TJBQ

**RWY 08-26:** H11702X200 (ASPH-CONC) S-155, D-235, 2D-455

PCN 23 R/B/W/T HIRL CL

**RWY 08:** REIL. PAPI(P4L)—GA 3.0° TCH 75'. Thld displcd 389'. Trees. 0.4% down.

**RWY 26:** PAPI(P4L)—GA 3.0° TCH 75'. Trees. 0.3% up.

**RUNWAY DECLARED DISTANCE INFORMATION**

**RWY 08:** TORA-11702 TODA-11702 ASDA-11702 LDA-11313

**RWY 26:** TORA-11702 TODA-11702 ASDA-11313 LDA-11313

**SERVICE:** S5 FUEL 100, JET A1

**AIRPORT REMARKS:** Attended continuously. Acft ctc FBO on 131.375 for svcs.

Rwy 08-26 pavement has numerous cracks and ponding on the mid portion of rwy. Ultralight ops not allowed. Obst lgt on twr NW of arpt OTS indef. PPR 24 hrs for unscheduled air carrier opr with more than 30 pax seats call arpt mgr 787-891-2286. No parking in Area C indef. Twy F clsd to all tfc indef. Twy A clsd btn Twy C and Twy D. BQN Twy A 1,000' west Twy C clsd UFN (indef). No 180° turns on rwy for large and heavy jet acft. For cstrms svc call 787-882-3556. For USDA svc call 787-882-3515. Maint engine run proh btn 0100-1000Z± dly, exc from Sat-Sun from 0100-1200Z±. Touch and go landings prohibited from 0200-1000Z± dly.

**AIRPORT MANAGER:** (787) 840-3151

**WEATHER DATA SOURCES:** AWOS-3PT 118.325 (787) 997-0715.

**COMMUNICATIONS:** CTAF 124.95 ATIS 118.325

**BORINQUEN RCO** 122.3 (SAN JUAN RADIO)

® **SAN JUAN CERAP** 124.35

**AGUADILLA TOWER** 124.95 (Sun thru Sat 1100-0100Z and other times by NOTAM)

**GND CON** 120.875 **CLNC DEL** 120.875 (124.35 Provided by San Juan Cerap when twr clsd)

**CLEARANCE DELIVERY PHONE:** For CD if freq are ots ctc San Juan CERAP at 787-253-8664/8665

**AIRSPACE:** CLASS D.

**RADIO AIDS TO NAVIGATION:** NOTAM FILE TJBQ.

**BORINQUEN (H) VORTACW** 113.5 BQN Chan 82 N18°29.88' W67°06.50' 271° 1.2 NM to fld. 214/10W.

TACAN AZIMUTH & DME unusable:

078°-095° byd 26 NM blo 3,000'

150°-175° byd 35 NM blo 6,000'

176°-195° byd 21 NM blo 3,600'

196°-235° byd 33 NM blo 4,600'

236°-258° byd 26 NM blo 2,600'

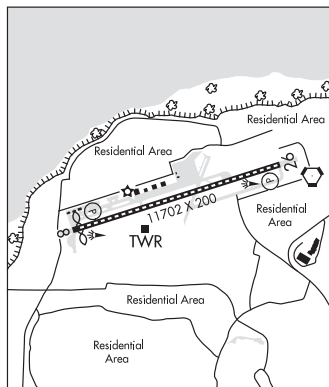
VOR portion unusable:

176°-218° byd 30 NM blo 3,600'

**PUERTO RICO-VIRGIN ISLANDS**

H-2G, L-5C, 6G, A-3F

IAP, AD



**ANTONIO RIVERA RODRIGUEZ** (See ISLA DE VIEQUES on page 438)

**ANTONIO/NERY/JUARBE POL** (See ARECIBO on page 437)