

MARYSVILLE

YUBA CO (MYV)(KMYV) 3 SE UTC-8(-7DT) N39°05.87' W121°34.19'

64 B NOTAM FILE MYV

RWY 14-32: H6007X150 (ASPH) S-75, D-100, 2S-127, 2D-150

HIRL

RWY 14: MALSR. VASI(V4L)—GA 3.0° TCH 50'. Tree.

RWY 32: VASI(V4L)—GA 3.0° TCH 32'. Pole.

RWY 05-23: H3314X60 (ASPH) S-42, D-60, 2D-95

RWY 05: Railroad.

RWY 23: Tree.

SERVICE: S3 FUEL 100LL, JET A LGT ACTIVATE MALSR Rwy 14, VASI

Rwy 14 and Rwy 32, HIRL Rwy 14-32—CTAF.

AIRPORT REMARKS: Attended 1400-0200Z±. All acft enter tfc pattern at 1000' AGL except turbine-powered or large airplanes at 1500' AGL. Migratory flocks of waterfowl invof arpt during the spring and fall of the year. Rwy 23 +35' p-lines 900'-1050' from rwy end running 145' left to 210' rgt.

AIRPORT MANAGER: 530-741-6463

WEATHER DATA SOURCES: ASOS 118.475 (530) 742-0695.

COMMUNICATIONS: CTAF/UNICOM 123.05

RCO 122.1R 122.6 110.8T (RANCHO MURIETA RADIO)

® **NORCAL APP/DEP CON** 125.4

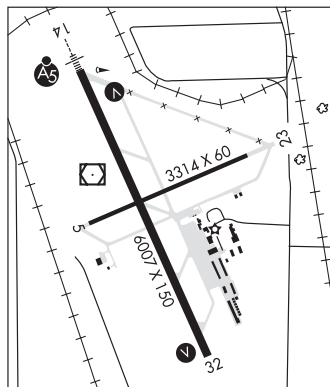
CLEARANCE DELIVERY PHONE: For CD ctc NorCal Apch at 916-361-6874.

AIRSPACE: CLASS E.

RADIO AIDS TO NAVIGATION: NOTAM FILE MYV.

MARYSVILLE (T) VOR/DME 110.8 MYV Chan 45 N39°05.92' W121°34.38' at fld. 62/16E.

ILS 110.5 I-MYV Rwy 14. Class IT. Unmonitored. Autopilot coupled apchs na blw 695' (1.66 NM fm thld).



SAN FRANCISCO

H-3B, L-2G, 3A

IAP, AD

MC CLELLAN AIRFIELD (See SACRAMENTO on page 204)

MC CLELLAN-PALOMAR (See CARLSBAD on page 106)

MEADOWS FLD (See BAKERSFIELD on page 91)

MEFFORD FLD (See TULARE on page 240)

MENDOCINO N39°03.19' W123°16.46' NOTAM FILE UKI.

(H) **VORTACW** 112.3 ENI Chan 70 022° 5.5 NM to Ukiah Muni. 2985/16E.

SAN FRANCISCO

H-3A, L-2G

MENDOTA

WILLIAM ROBERT JOHNSTON MUNI (M90) 0 E UTC-8(-7DT) N36°45.52' W120°22.28'

SAN FRANCISCO

162 NOTAM FILE RIU

L-3C

RWY 15-33: H3499X50 (ASPH) S-12.5

RWY 33: Thld dsplcd 777'. Bldg. Rgt tfc.

AIRPORT REMARKS: Unattended. Arpt CLOSED ngts. Partial twy rough/uneven sfc; extv asphalt repair and patching.

AIRPORT MANAGER: (559) 655-4298

COMMUNICATIONS: CTAF 122.9

CLEARANCE DELIVERY PHONE: For CD ctc NorCal Apch at 916-361-0516.

RADIO AIDS TO NAVIGATION: NOTAM FILE RIU.

PANOCHÉ (L) VORTAC 112.6 PXN Chan 73 N36°42.93' W120°46.72' 066° 19.8 NM to fld. 2060/16E.

VOR unusable:

230°-280° byd 7NM blo 9,000'