

**RENO/TAHOE INTL** (RNO)(KRNO) P (ANG) 3 SE UTC-8(-7DT) N39°29.95' W119°46.09'

**SAN FRANCISCO**

4415 B TPA—See Remarks LRA Class I, ARFF Index C NOTAM FILE RNO

**H-3B, L-9A**

**RWY 16R-34L:** H11001X150 (CONC-GRVD) S-75, D-185, 2D-350,

2D/2D2-850 PCN 88 R/B/W/T HIRL CL

**RWY 16R:** MALSR. PAPI(P4L)—GA 3.06° TCH 77'. RVR-T Thld dsplcd 1000'.

**RWY 34L:** MALSR. PAPI(P4L)—GA 3.54° TCH 72'. RVR-R Thld dsplcd 990'. Ground.

**RWY 16L-34R:** H9000X150 (CONC-GRVD) S-75, D-209, 2D-407,

2D/2D2-850 PCN 88 R/B/W/T HIRL CL

**RWY 16L:** REIL. PAPI(P4L)—GA 3.0° TCH 75'.

**RWY 34R:** REIL. PAPI(P4L)—GA 3.35° TCH 75'.

**RWY 07-25:** H6102X150 (CONC-GRVD) S-60, D-170, 2D-260 PCN 72 R/B/W/T MIRL

**RWY 07:** REIL. PAPI(P4L)—GA 3.2° TCH 48'. Pole.

**RWY 25:** REIL. PAPI(P4L)—GA 3.0° TCH 45'. Tree.

**RUNWAY DECLARED DISTANCE INFORMATION**

**RWY 07:** TORA-5854 TODA-5854 ASDA-6102 LDA-5854

**RWY 16L:** TORA-9000 TODA-9000 ASDA-9000 LDA-9000

**RWY 16R:** TORA-11001 TODA-11001 ASDA-11001 LDA-10001

**RWY 25:** TORA-6102 TODA-6102 ASDA-6102 LDA-6102

**RWY 34L:** TORA-11001 TODA-11001 ASDA-11001 LDA-10011

**RWY 34R:** TORA-9000 TODA-9000 ASDA-9000 LDA-9000

**SERVICE:** S4 FUEL 100LL, JET A1+ OX 1, 2, 3, 4 MILITARY—FUEL A, A+ (C775-858-7300.) (NC-100LL, A1+)

**NOISE:** Noise sensitive area all quadrants. All coml acft ctc gnd ctl for advisories prior to push back on the terminal ramp.

Pilots of turbojet acft use recommended NS ABTMT procedures, avbl on req. Pilots of non-turbojet acft use best abatement procedures and settings. Avoid as much as feasible flying over populated areas.

**AIRPORT REMARKS:** Attended continuously. Intsv glider activity invof arpt and surrounding areas up to 18000'. Waterfowl all quadrants all seasons. Concentrated NW of Rwy 16R and East of Rwy 16L. Twy M clsd to air carrier acft. Twy J east of rwy 16L-34R clsd to air carrier acft. Twy A btn N Twy B and Twy D clsd to acft with wingspan greater than 149'. Twy C btn Twy L and Twy D clsd to air carrier acft. Twy C btn Twy L and Twy D rstd to acft 100000 lbs or less. TPA—5215(800) SINGL ENG, 5415(1000) MULT ENG/turboprop/jet. ACFT over 12500 lbs: written PPR for TRG flights; for FTBR info CTC ARPT OS 1-877-736-6359. 24 hrs PPR for tran acft parking with wingspans greater than 75'. LDG rights ARPT, PPR—call 775-784-5585; AFT HRS LDG WO prior APVIL NA. Glider/soaring ops 30-50 miles South of arpt dur VFR wx and mountain wave wind cond 1900Z± to SS. Flight Notification Service (ADCUS) avbl. NOTE: See Special Notices—Glider/Soaring Activities around the Reno-Tahoe Intl Arpt.

**AIRPORT MANAGER:** 775-328-6550

**WEATHER DATA SOURCES:** ASOS 135.8 (775) 324-6659.

**COMMUNICATIONS:** D-ATIS 135.8 775-348-1550 UNICOM 122.95

RCO 122.2 122.5 (RENO RADIO)

Ⓡ NORCAL APP/DEP CON 119.2 (036°-225°) 126.3 (226°-035°)

TOWER 118.7 GND CON 121.9 CLNC DEL 124.9

CPDLC (LOGON KUSA)

PDC

**AIRSPACE:** CLASS C svc ctc APP CON.

**RADIO AIDS TO NAVIGATION:** NOTAM FILE RNO.

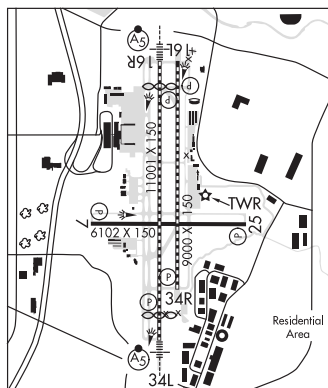
**MUSTANG (H) VORTACW** 117.9 FMG Chan 126 N39°31.88' W119°39.36' 234° 5.5 NM to fld. 5950/16E.

VORTAC unusable:

200°-230° byd 30 NM blo 13,000'

ILS/DME 110.9 I-RNO Chan 46 Rwy 16R. Class ID. Localizer backcourse unusable byd 20° left of course; byd 30° right of course.

ILS/DME 109.9 I-AGY Chan 36 Rwy 34L. Class IE. LOC unusable avb 6,400' at thld; within 3.6 NM avb 8,500'.



**SPANISH SPRINGS** (N86) 10 N UTC-8(-7DT) N39°40.27' W119°43.51'

**SAN FRANCISCO**

4620 NOTAM FILE RNO

**RWY 17-35:** 3418X60 (DIRT) RWY LGTS(NSTD)

**RWY 35:** Bldg, Rgt tfc.

**AIRPORT REMARKS:** Unattended. Airport clsd indefinitely, main Rwy 17-35 has temporary yellow X's at each end. Rwy 17-35 hazardous when wet. No line of site between ends of rwy. Mountains West and North. Uncontrolled vehicle access across rwys. Rwy 17 gradient 2.5% first 500'. Rwy 17-35 thresholds marked with 4 white cement pads flush to the ground. Rwy edge marked with reflectors. Rwy 17-35 rwy lgts NSTD. Rising terrain at rwy edges narrowing primary sfc at center of rwy. Par twy clsd indef.

**AIRPORT MANAGER:** 775-772-8049

**COMMUNICATIONS:** CTAF 122.9

**CLEARANCE DELIVERY PHONE:** For CD ctc NorCal Apch at 916-361-0596.