

PROVO MUNI (PVU)(KPVU) 2 SW UTC-7(-6DT) N40°13.15' W111°43.40'

4497 B TPA—See Remarks Class I, ARFF Index B NOTAM FILE PVU

RWY 13-31: H8603X150 (ASPH-GRVD) S-65, D-85, 2S-108,
2D-140 HIRL

RWY 13: REIL. PAPI(P4L)—GA 3.0° TCH 50'. Rgt tfc.

RWY 31: PAPI(P2L)—GA 3.0° TCH 46'.

RWY 18-36: H6628X150 (ASPH) S-50, D-70, 2S-89, 2D-110 MIRL

RWY 18: PAPI(P2L)—GA 3.0° TCH 45'. Rgt tfc.

RWY 36: PAPI(P2L)—GA 3.0° TCH 46'.

RUNWAY DECLARED DISTANCE INFORMATION

RWY 13: TORA-8599 TODA-8599 ASDA-8599 LDA-8599

RWY 18: TORA-6614 TODA-6614 ASDA-6614 LDA-6614

RWY 31: TORA-8599 TODA-8599 ASDA-8599 LDA-8599

RWY 36: TORA-6614 TODA-6614 ASDA-6614 LDA-6614

SERVICE: S4 FUEL 100, JET A QX 2, 4

AIRPORT REMARKS: Attended Nov-May 1300-0400Z, Jun-Oct
1300-0500Z. For arpt svcs ctc 128.85. 24 hr PPR for unscheduled
air carrier ops call arpt mgr 801-852-6715. Extv flt trng invof arpt.
Use caution for extv paragliding ops invof point of the mountain.
Primary radar not avbl. Radar tfc advisories and svcs avbl for
transponder equipped acft only. Be alert helicopters arr and dep from
rwyas and twys. TPA-5500(1003) single engine, 6000(1503)
turbojet. NOTE: See Special Notices—Extensive Flight Training in vicinity of Provo Municipal Airport.

AIRPORT MANAGER: 801-852-6715

WEATHER DATA SOURCES: AWOS-3PT 135.175 (801) 373-9782. LAWRS.

COMMUNICATIONS: CTAF 125.3 ATIS 135.175

RCO 122.6 (CEDAR CITY RADIO)

Ⓡ SALT LAKE CITY APP/DEP CON 118.85

TOWER 125.3 (1400-0400Z) GND CON 119.4

CLEARANCE DELIVERY PHONE: For CD when ATCT is clsd ctc slc Apch at 801-325-9670.

AIRSPACE: CLASS D svc 1400-0400Z; other times CLASS E.

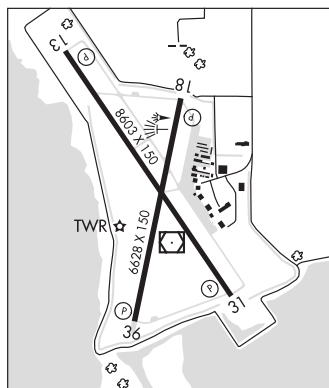
RADIO AIDS TO NAVIGATION: NOTAM FILE PVU.

(T) VOR/DME 108.4 PVU Chan 21 N40°12.90' W111°43.28' at fld. 4493/15E.

VOR/DME unusable:

350°-080° byd 10 NM

ILS/DME 110.3 I-PVU Chan 40 Rwy 13. Class IT. ILS/DME unmonitored when ATCT clsd. Pvu LOC unusable byd
14.5 DME blw 7,900'.



RICHFIELD MUNI (RIF)(KRIF) 1 SW UTC-7(-6DT) N38°44.05' W112°06.10'

5318 B NOTAM FILE CDC

RWY 01-19: H7100X100 (ASPH-GRVD) S-45, D-75 PCN 36 F/D/X/T

MIRL 0.5% up S

RWY 01: REIL. PAPI(P2L)—GA 3.0° TCH 45'. Rgt tfc.

RWY 19: REIL. PAPI(P2L)—GA 3.0° TCH 45'.

SERVICE: S4 FUEL 100LL, JET A, A+ LGT ACTIVATE REIL Rwy 01 and
Rwy 19; MIRL Rwy 01-19—CTAF.

AIRPORT REMARKS: Attended 1500-0000Z. For fuel after hours call
435-896-3053. Cold temperature airport. Altitude correction required
at or below -12C.

AIRPORT MANAGER: (435) 896-9413

WEATHER DATA SOURCES: AWOS-3 133.375 (435) 896-1775.

COMMUNICATIONS: CTAF/UNICOM 122.8

RCO 122.5 (CEDAR CITY RADIO)

Ⓡ SALT LAKE CENTER APP/DEP CON 125.575

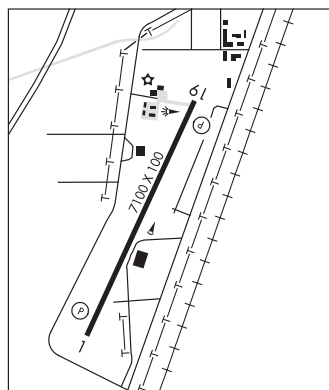
CLEARANCE DELIVERY PHONE: For CD if una to ctc on FSS freq, ctc Salt Lake
ARTCC at 801-320-2568.

RADIO AIDS TO NAVIGATION: NOTAM FILE CDC.

DELTA (H) VORTACW 116.1 DTA Chan 108 N39°18.13'
W112°30.33' 135° 38.9 NM to fld. 4642/16E.

VOR unusable:

045°-090° byd 25 NM blo 10,700'



LAS VEGAS

H-3D, L-9C

IAP