

RNAV (GPS) RWY 16

AFTON MUNI (AFO)

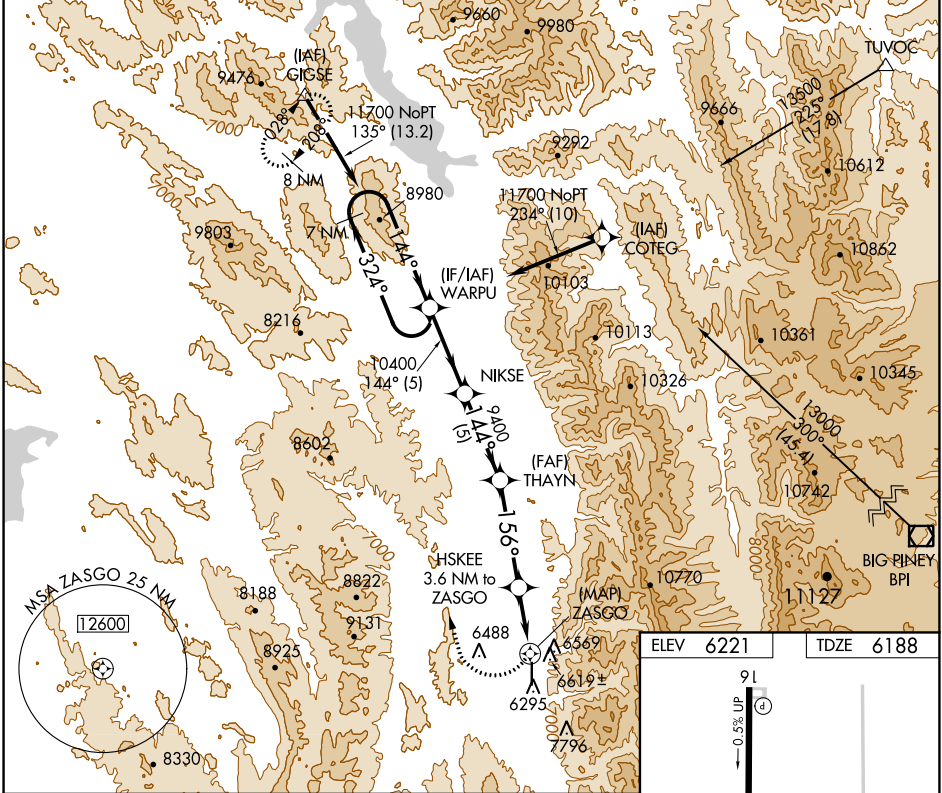
| | |
|------------------------|-------------------------|
| APP CRS 156° | Rwy Idg 7025 |
| | TDZE 6188 |
| | Apt Elev 6221 |

RNP APCH.

▼ If local altimeter setting not received, procedure NA.
 ▲ NA Circling NA east of Rwy 16-34. Rwy 16 helicopter visibility reduction below ¾ SM NA.
 ❄ -22°C

MISSED APPROACH: Climbing right turn to 11700 direct GIGSE and hold.

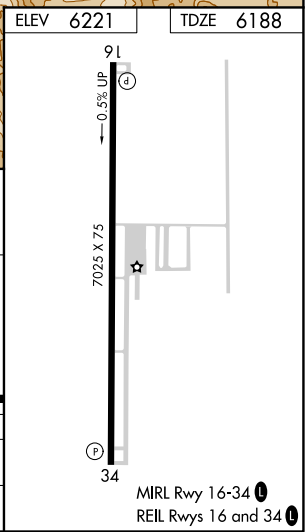
| | | |
|---------------------------|--|---------------------------------|
| AWOS-3P 119.025 | SALT LAKE CENTER 128.35 239.25 | UNICOM 122.8 (CTAF) 0 |
|---------------------------|--|---------------------------------|



7 NM Holding Pattern WARPJU VGSI and descent angles not coincident (VGSI Angle 3.50/TCH 52).

| | | | | |
|--------|-------|--------|--------|---------------|
| 11700 | 10400 | 9400 | 7520 | ZASGO |
| ←324° | →144° | →144° | →156° | →2.99° TCH 47 |
| 5 NM | 5 NM | 5.9 NM | 1.3 NM | 2.3 NM |
| 0.5 NM | | | | |

| CATEGORY | A | B | C | D |
|----------|--------------------------|--------------------------|------------------------|----|
| LNVA MDA | 7140-1¼ 952 (1000-1¼) | 7140-1½ 952 (1000-1½) | 7140-3 952 (1000-3) | NA |
| CIRCLING | 7140-1¼ 919 (1000-1¼) | 7140-1½ 919 (1000-1½) | 7140-3 919 (1000-3) | NA |



NW-1, 12 AUG 2021 to 09 SEP 2021

NW-1, 12 AUG 2021 to 09 SEP 2021