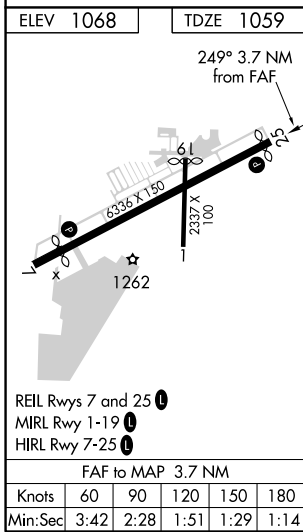
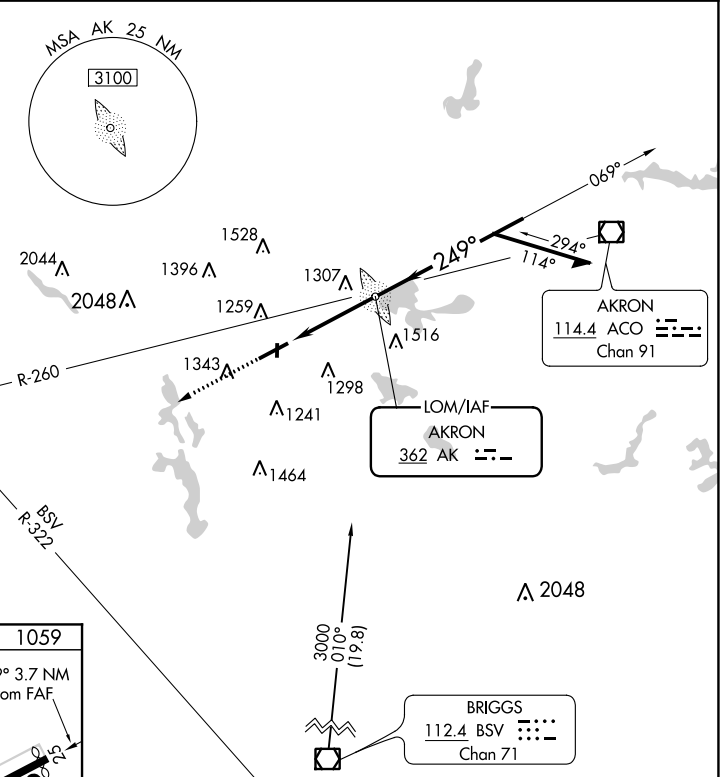
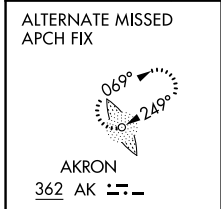


LOM AK 362	APP CRS 249°	Rwy Idg 6077
		TDZE 1059
		Apt Elev 1068

NDB RWY 25

AKRON FULTON INTL (AKR)

<p>▼ Rwy 25 helicopter visibility reduction below 1 SM NA. ▲ Circling Rwy 1, 7, 19 NA at night.</p>	<p>MISSED APPROACH: Climb to 3100 on heading 249° and BSV VOR/DME R-322 to RITZS INT/BSV 21.2 DME and hold.</p>		
ASOS 126.825	CLEVELAND APP CON * 118.6 371.875	CLNC DEL 121.6	UNICOM 123.075 (CTAF) 0



3100	BSV R-322	RITZS	Visual Segment - Obstacles.	
hdg 249°			AK LOM	Remain within 10 NM
			3000	
			2300	
			069°	
			249°	
			3.7 NM	
CATEGORY	A	B	C	D
S-25	1620-1	561 (600-1)	1620-1½	561 (600-1½)
0 CIRCLING	1620-1	1680-1	1800-2	1840-2½
	552 (600-1)	612 (700-1)	732 (800-2)	772 (800-2½)

EC-2, 09 SEP 2021 to 07 OCT 2021

EC-2, 09 SEP 2021 to 07 OCT 2021