

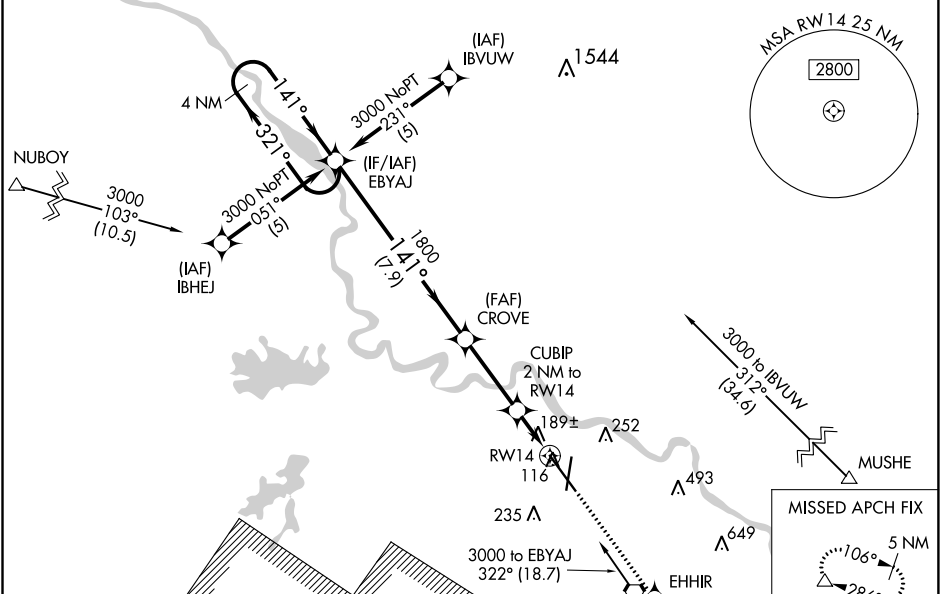
WAAS CH 56417 W14A	APP CRS 141°	Rwy Idg 9352 TDZE 85 Apt Elev 89
--	------------------------	---

RNAV (GPS) RWY 14

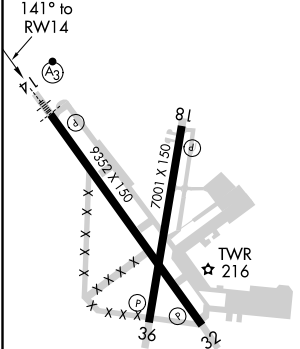
ALEXANDRIA INTL (AEX)

<p>⚠ DME/DME RNP-0.3 NA. For uncompensated Baro-VNAV systems, LNAV/VNAV NA below -1.5°C (5°F) or above 48°C (118°F). For inop SSALR increase LNAV Cat D visibility to RVR 6000. RADAR required when R-3801 A-B in use. **RVR 1800 authorized with use of FD or AP or HUD to DA.</p>	<p>SSALR </p>	<p>MISSED APPROACH: Climb to 4000 direct EHHIR and via track 106° to MUSHE and hold.</p>
--	-------------------	--

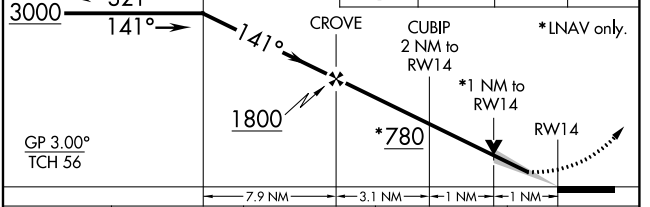
ASOS 123.975	POLK APP CON 125.4 254.8	ALEXANDRIA TOWER 127.35 (CTAF) 269.2	GND CON 121.9 372.0	CLNC DEL 121.9
------------------------	------------------------------------	--	-------------------------------	--------------------------



ELEV 89	D	TDZE 85
---------	----------	---------



VGSI and RNAV glidepath not coincident 4 NM (VGSI Angle 3.00/TCH 71).
Holding Pattern EBYAJ



CATEGORY	A	B	C	D
LPV DA**		285/24	200 (200-½)	
LNAV/VNAV DA		488/50	403 (400-1)	
LNAV MDA	480/24	395 (400-½)		480/50 395 (400-1)
CIRCLING	540-1 451 (500-1)	560-1 471 (500-1)	700-1¾ 611 (700-1¾)	860-2½ 771 (800-2½)

SC-4, 09 SEP 2021 to 07 OCT 2021

SC-4, 09 SEP 2021 to 07 OCT 2021