

WAAS CH <b>58100</b> <b>W36A</b>	APP CRS <b>006°</b>	Rwy Idg <b>7001</b> TDZE <b>87</b> Apt Elev <b>89</b>
--	------------------------	---

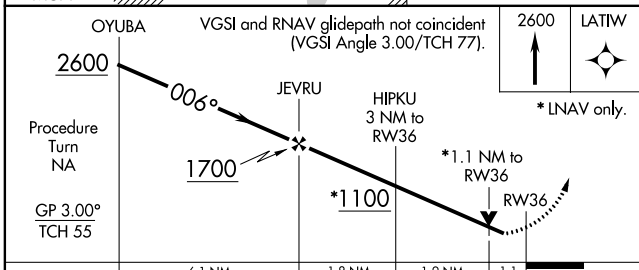
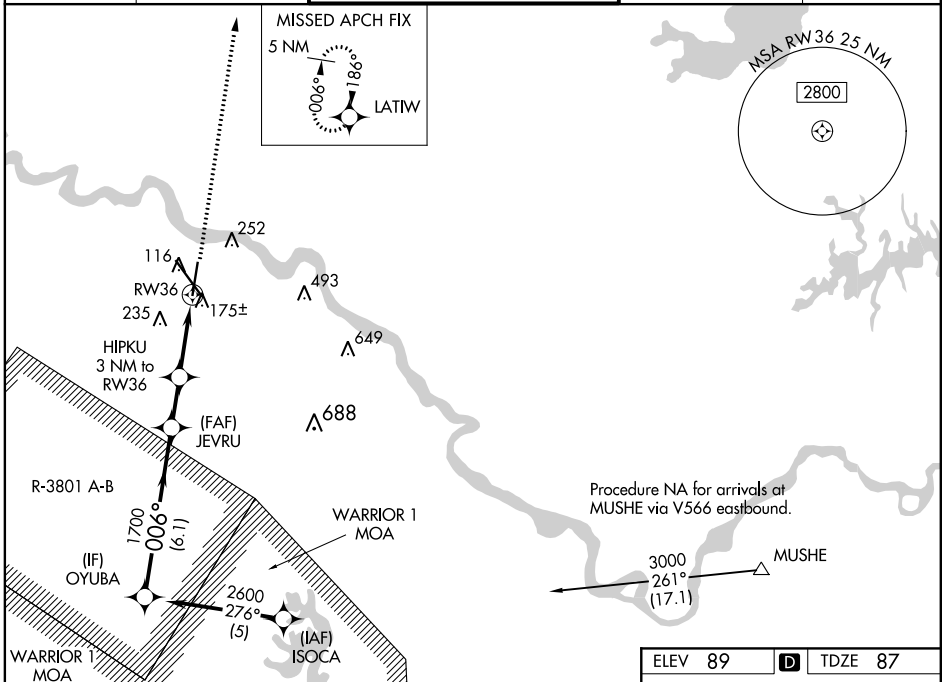
# RNAV (GPS) RWY 36

ALEXANDRIA INTL (AEX)

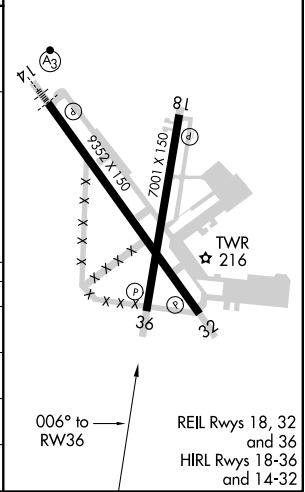
**⚠** DME/DME RNP-0.3 NA. When R-3801 A-B in use, procedure NA. For uncompensated Baro-VNAV systems, LNAV/VNAV NA below -15°C (5°F) or above 48°C (119°F).  
**⚠** Rwy 36 helicopter visibility reduction below ¾ SM NA.

MISSED APPROACH: Climb to 2600 direct LATIW and hold.

ASOS <b>123.975</b>	POLK APP CON <b>125.4 254.8</b>	ALEXANDRIA TOWER <b>127.35</b> (CTAF) <b>269.2</b>	GND CON <b>121.9 372.0</b>	CLNC DEL <b>121.9</b>
------------------------	------------------------------------	---	-------------------------------	--------------------------



ELEV 89	<b>D</b>	TDZE 87
---------	----------	---------



CATEGORY	A	B	C	D
LPV DA	391-1		304 (400-1)	
LNAV/VNAV DA	425-1¼		338 (400-1¼)	
LNAV MDA	500-1 413 (500-1)		500-1¼ 413 (500-1¼)	
CIRCLING	540-1 451 (500-1)	560-1 471 (500-1)	700-1¾ 611 (700-1¾)	860-2½ 771 (800-2½)

SC-4, 09 SEP 2021 to 07 OCT 2021

SC-4, 09 SEP 2021 to 07 OCT 2021