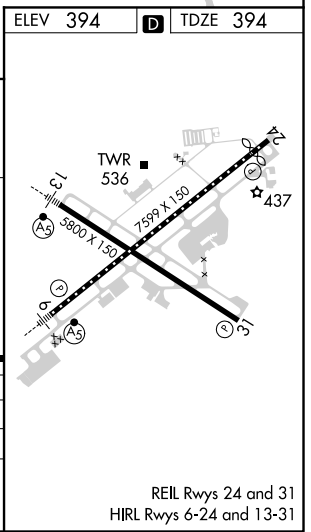
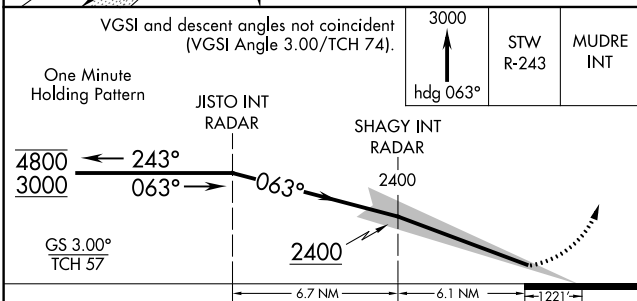
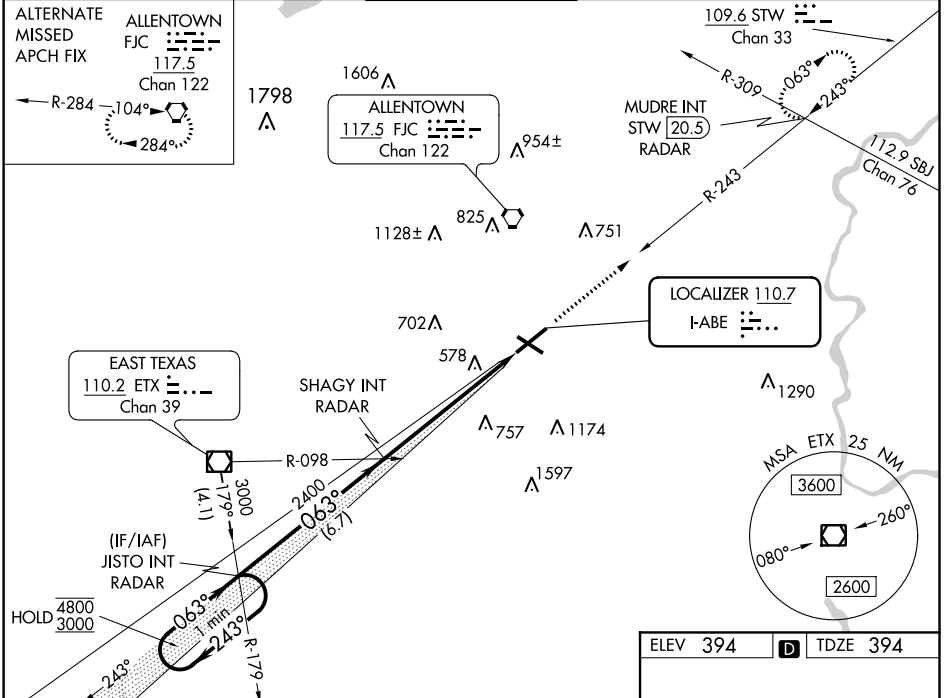


LOC I-ABE <b>110.7</b>	APP CRS <b>063°</b>	Rwy Idg <b>7599</b>
		TDZE <b>394</b>
		Apt Elev <b>394</b>

# ILS RWY 6 (SA CAT I & II)

## LEHIGH VALLEY INTL (ABE)

<b>▽</b> <b>△</b>	SA CAT I: Requires specific OPSPEC, MSPEC, or LOA approval and use of HUD to DH. SA CAT II: Reduced lighting: Requires specific OPSPEC, MSPEC, or LOA approval and use of autoland or HUD to touchdown.	MALSR 	MISSED APPROACH: Climb to 3000 on heading 063° and STW R-243 to MUDRE INT/STW 20.5 DME/RADAR and hold.
ATIS <b>126.975</b>	ALLENTOWN APP CON <b>119.65 124.45 351.8</b>	ALLENTOWN TOWER <b>120.5 257.95</b>	GND CON <b>121.9 257.95</b>
			CLNC DEL <b>124.05 257.95</b>



ELEV 394	TDZE 394
One Minute Holding Pattern	JISTO INT RADAR
SHAGY INT RADAR	MUDRE INT
4800 ← 243°	→ 063°
3000	→ 063°
GS 3.00°	TCH 57
6.7 NM	6.1 NM
1.221 NM	
CATEGORY	A B C D
S-ILS 6	SA CAT I RA 154/14 150 DA 544
S-ILS 6	SA CAT II RA 114/12 100 DA 494
<b>SA CATEGORY I &amp; II ILS - SPECIAL AIRCREW &amp; AIRCRAFT CERTIFICATION REQUIRED</b>	

NE-4, 09 SEP 2021 to 07 OCT 2021

NE-4, 09 SEP 2021 to 07 OCT 2021