

# ILS or LOC RWY 13

LEHIGH VALLEY INTL (ABE)

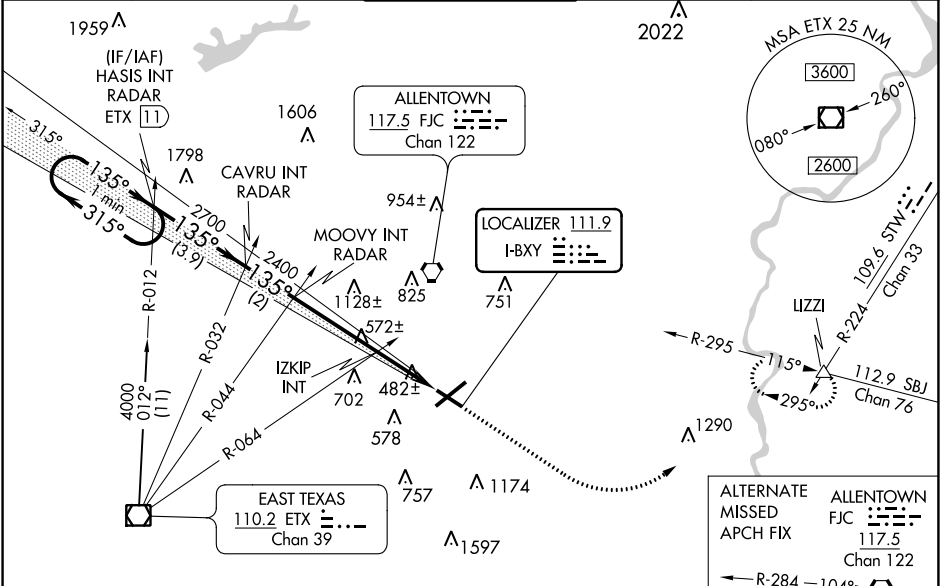
LOC I-BXY <b>111.9</b>	APP CRS <b>135°</b>	Rwy Idg TDZE Apt Elev	<b>5800</b> <b>386</b> <b>394</b>
---------------------------	------------------------	-----------------------------	---

**⚠** For inoperative MALSR, increase IZKIP fix minimums S-LOC 13 Cat C/D visibility to 1 mile.

MALSR

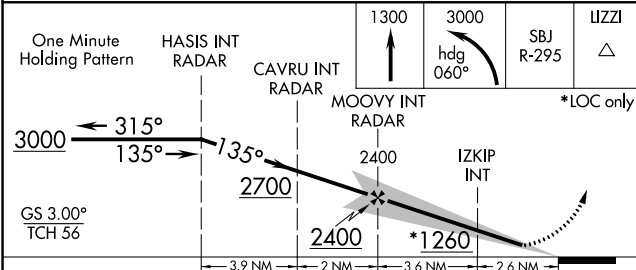
MISSED APPROACH: Climb to 3000 then climbing left turn to 3000 on heading 060° and on SBJ VOR/DME R-295 to IZZI INT and hold.

ATIS <b>126.975</b>	ALLENTOWN APP CON <b>119.65 124.45 351.8</b>	ALLENTOWN TOWER <b>120.5 257.95</b>	GND CON <b>121.9 257.95</b>	CLNC DEL <b>124.05 257.95</b>
------------------------	---	--	--------------------------------	----------------------------------

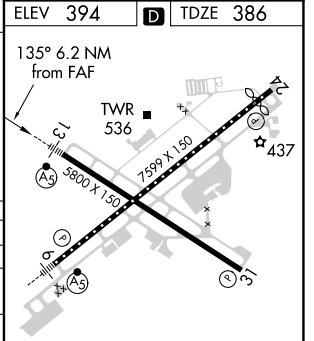


NE-4, 09 SEP 2021 to 07 OCT 2021

NE-4, 09 SEP 2021 to 07 OCT 2021



ELEV 394	<b>D</b>	TDZE 386
----------	----------	----------



CATEGORY	A	B	C	D
S-ILS 13	586- $\frac{1}{2}$ 200 (200- $\frac{1}{2}$ )			
S-LOC 13	1260- $\frac{1}{2}$ 874 (900- $\frac{1}{2}$ )	1260- $\frac{3}{4}$ 874 (900- $\frac{3}{4}$ )	1260-2 874 (900-2)	
<b>C</b> CIRCLING	1260-1 $\frac{1}{4}$	866 (900-1 $\frac{1}{4}$ )	1260-2 $\frac{1}{2}$ 866 (900-2 $\frac{1}{2}$ )	1600-3 1206 (1300-3)
IZKIP FIX MINIMUMS (DUAL VOR RECEIVERS REQUIRED)				
S-LOC 13	740- $\frac{1}{2}$	354 (400- $\frac{1}{2}$ )	740- $\frac{5}{8}$	354 (400- $\frac{5}{8}$ )
<b>C</b> CIRCLING	840-1 446 (500-1)	900-1 506 (600-1)	1180-2 $\frac{1}{4}$ 786 (800-2 $\frac{1}{4}$ )	1600-3 1206 (1300-3)

REIL Rwy 24 and 31	
HIRL Rwy 6-24 and 13-31	
FAF to MAP 6.2 NM	
Knots	60 90 120 150 180
Min:Sec	6:12 4:08 3:06 2:29 2:04